

Checkers

Games of the 2017 GAYP World Qualifier

Annotated by Jim Loy

Alma

Sergio Scarpetta – Matteo Bernini

11-15 23-19 8-11 22-17 3-8(A) 25-22 11-16 27-23 16-20 32-27 7-11 19-16 12x19 23x7 2x11 26-23 9-14
 24-19 15x24 28x19 11-15 19-16(B) 15-18* 22x15 10x26 17x10 6x15 30x23 8-12 16-11 12-16(C) 27-24
 20x27 31x24 5-9 11-7 9-14 29-25 16-20 23-19 20x27 19x10 27-31 25-22 draw

A – Alma.

B – 22-18 draw, *Robertson's Guide* p.299 v.69.

C – 15-19 draw, J. Drummond 1861 p.37D.

John Webster – Colin Price

11-15 23-19 8-11 22-17 3-8 25-22 11-16 26-23 7-11 31-26 9-14 29-25 16-20 19-16 12x19 23x7 2x11 26-23
 8-12 23-19 4-8 17-13 15-18 22x15 11x18 30-26 10-15 19x10 6x15 26-22 12-16 13-9 8-11 22-17 18-22 17x10
 22x29 9-6 16-19 6-2 19-23 27x18 20x27 (15-22 draw, H. Coltherd – J. Way, 1858 match g.7) 32x23 15x22
 28-24 22-26* 23-19 26-31 24-20 11-15 19-16 15-19 16-11 5-9 2-7 9-14 11-8 draw

John Webster – Matteo Bernini

11-15 23-19 8-11 22-17 3-8 25-22 11-16 27-23 7-11 24-20 15x24 28x19 10-14 17x10 6x24 22-18 1-6 21-17
 6-10 17-13 24-27 draw (Dempsey – Bullock, *Lees' Guide* p.10m)

John Webster – Mark Sokolovsky

11-15 23-19 8-11 22-17 3-8 25-22 11-16 27-23 7-11 24-20 15x24 28x19 10-14 17x10 6x24 22-18 1-6 29-25
 24-28 25-22 9-13 22-17 13x22 26x17 6-9 30-26! 2-7* (9-13? loses in a *Lees' Guide* appendix p.209 v.1)
 18-15 draw (*Lees' Guide* p.10 v.3)

Ayrshire Lassie

Elia Cantatore – Alex Moiseyev

11-15 24-20 8-11(A) 28-24 4-8 22-18 15x22 25x18 10-14?(B) 29-25 7-10 25-22
 {diagram} 9-13?(C) 18x9 5x14 22-18 1-5(D) 18x9 5x14 26-22 2-7(E) 31-26
 14-17 21x14 10x17 24-19 6-10 23-18 10-15 19x10 7x23 27x18 12-16 18-14 16-19
 14-9 11-15 9-6 19-24 6-2 15-19 2-6 8-11 6-10 WW

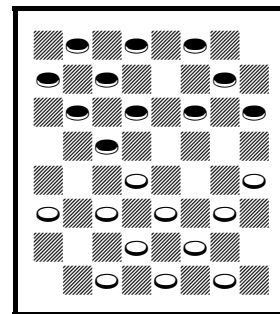
A – Ayrshire Lassie.

B – Weak. 10-15 draw PP. *Basic Checkers* recommends 9-14 draw PP.

C – See the diagram. 12-16 draw PP.

D – 6-9 WW, J. Solan – E. Bruch, 2003 Ohio Ty.

E – 10-15 23-18! WW.



Red draws

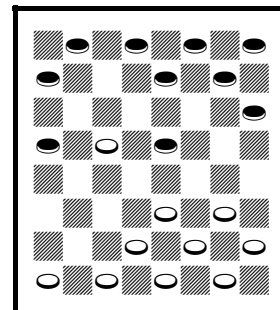
Boston

Nicholas Katamba – LaVerne Wray

11-15 22-17 9-13 17-14(A) 10x17 21x14 6-10 25-21 10x17 21x14 {diagram}
 13-17?(B) 29-25 17-21 24-19 15x24 28x19 8-11 25-22 2-6 22-17 6-10 26-22
 11-15 27-24 7-11 14x7 3x10 23-18 5-9 17-13 1-6 31-27 4-8 27-23 WW

A – Boston.

B – See the diagram. This may be the loser. 2-6 draw PP.



Red draws

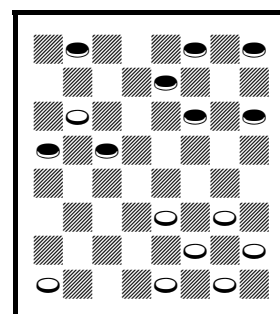
Alex Moiseyev – LaVerne Wray

11-15 22-17 9-13 17-14 10x17 21x14 6-10(A) 25-21 10x17 21x14 2-6 26-22(B)
 8-11 30-25 6-10 14-9 5x14 22-18 15x22 25x9 10-14 {diagram} 23-19(C) 14-17
 24-20 17-22 27-24 11-15 19x10 7x14 9-6 1x10 20-16 12x19 24x6 14-17 6-2 22-26
 31x22 17x26 29-25 26-30 25-22 30-26 22-18 26-23 18-15 4-8 15-10 8-11 28-24
 11-16 24-20 16-19 20-16 23-18 2-6 draw

A – 8-11 draw PP.

B – 29-25 draw, G. Leclair – J. Sprague, 1952 National.

C – See the diagram. 29-25 draw, L. Kondlo – M. Borghetti, 2015 WCM g.20.
 24-20 draw, C. Nash – R. Beckwith, 2005 GAYP National.

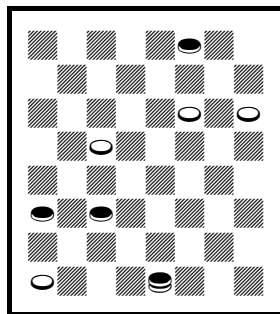


White moves

Bristol (also see J. Webster – N. Katamba, the last game of Double Corner)

Sergio Scarpetta – Melikaya Nonyukela

11-16(A) 24-20 16-19 23x16 12x19 22-18 9-14 18x9 5x14 25-22 8-12 22-17 4-8 27-23 8-11 23x16 12x19
 32-27 11-15 20-16 15-18 17-13 14-17 21x14 10x17 16-12(B) 17-21(C) 27-24(D) 7-10 24x15 10x19 13-9
 6x13 26-23 18x27 31x15 2-7 28-24 13-17 24-20 7-10 15x6 1x10 30-26 10-14 20-16 14-18 16-11 18-22 26-23
 22-26 23-18 26-31 18-14 17-22 {diagram} 14-10*(E) 31-27 11-7* 27-23 7-2 23-18 10-6* 18-15 6-1 21-25
 1-6 25-30 6-9 30-25 9-14 25-21 2-6 22-26 14-10 15-11 6-9 26-31 10-14 31-26 14-10* 21-17 10-6 11-15 6-2
 26-22 9-6 17-13 6-1* 22-17 1-6 15-11 6-1 17-14 29-25 13-17 25-21* 17-13 1-6 14-18 6-1* 11-15 1-5* 18-14
 5-1 14-9 1-6* 9-5 6-1 15-18 1-6* 18-15 6-1 15-11 2-6 5-9 6-2* 9-14 1-6 14-18 6-1* 13-9 1-5 9-14 5-1* 14-10
 21-17 18-23 1-5 23-19 5-9 {diagram} 10-6?(F) 9-14 WW(G)



White moves

A – Bristol.

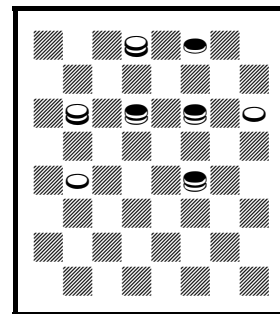
B – 27-23 draw PP.

C – May be the only draw.

D – Seems to be a good alternative to 29-25 draw, *Robertson's Guide* p.54 v.85.

E – See the first diagram. As far as I can tell, White has done well. But two kings v. three kings will require some care.

F – See the second diagram. Red falls into a shot, while still trying to win. Others draw.



Red draws

G – Continue 6-1 2-6 WW.

Colin Price – Nicholas Katamba

11-15 24-20 15-19(A) 23x16 12x19 27-24(B) 9-14(C) 24x15 10x19 {diagram}
26-23?(D) 19x26 30x23 8-11 22-18 4-8 18x9 5x14 25-22 11-15 23-19(E) 15x24
28x19 8-12 31-26 7-11 26-23 11-15 19x10 6x15 32-27 15-19 23x16 12x19 20-16
2-7 22-17 14-18 29-25 19-23 27-24 23-26 17-14 26-30 RW(F)

A – = 11-16 24-20 16-19, Bristol.

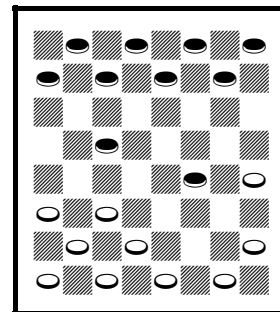
B – 22-18 draw PP.

C – 7-11 draw PP.

D – See the diagram. 22-17 may draw, C. Adamson – W. Beattie, 1884 England v. Scotland.

E – Others lose.

F – Continue 24-20 7-11 RW.



White draws?

Cross

Vadym Lapin – Melikaya Nonyukela

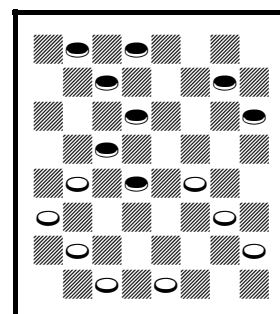
11-15 23-18 8-11(A) 18-14 9x18 24-19 15x24 22x8 4x11 28x19 5-9 25-22
11-15(B) 27-24 9-14 22-17 7-11 29-25 15-18 26-22!(C) 3-8 22x15 11x18 32-28
{diagram} 18-22(D) 25x9 6x22 19-16 12x19 24x6 1x10 21-17 8-11 28-24 2-6*
31-27 11-15 27-23 22-26* 23-19 6-9 30x23 9-14 17-13 15-18 13-9 18x27 9-6
14-17 draw

A – Cross.

B – 9-13 draw PP.

C – May be easier than 17-13 PP.

D – See the diagram. 18-23 may be stronger, J. Drummond 1853 p.101G.



Red moves

Cross Choice

Elia Cantatore – Mzikabawo Luntonti

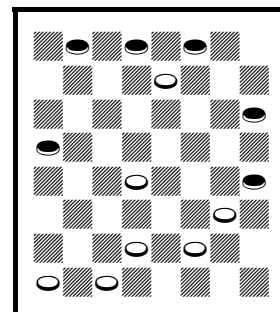
11-15 23-18 9-14(A) 18x9(B) 5x14 22-17 8-11 25-22 11-16 24-19 15x24 28x19
16x23 27x9 6x13 17-14 10x17 21x14 4-8 31-27(C) 8-11 22-18 11-16 27-24 16-20
32-27 7-10 14x7 {diagram} 3x10?(D) 29-25 2-7 25-21 7-11 18-14 10x17 21x14
11-15 14-10 12-16 26-23 13-17 10-7 17-22 7-3 22-26 23-18* 15x22 30x23 22-26
3-8 26-31 8-12 1-6 12x19 6-9 23-18 9-13 19-23 13-17 18-14 17-21 14-9 21-25 9-6
25-30 6-1 30-25 1-6 25-30 6-10 30-25 23-19 25-30 19-15 30-26 10-6 26-30 24-19
31x24 15-10 24x15 10x19 WW

A – Cross Choice.

B – 18-11 may be more popular.

C – 29-25 draw, G. Vidlak – M. Chamblee, 1953 Southern Open. 22-18 draw, W. Bryden – J. Ferrie, 1891 match g.16.

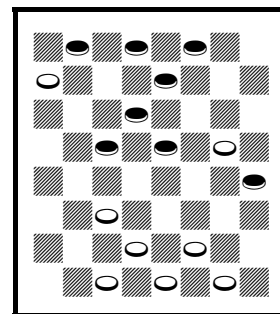
D – See the diagram. 2-11! 30-25 3-7! 25-22 7-10* 29-25 10-15* 25-21* 1-6* 21-17 6-10 26-23 11-16*
18-11 10-15 draw.



Red draws

Nicholas Katamba – Melikaya Nonyukela

11-15 23-18 9-14 18x9 6x13(A) 22-17(B) 13x22 25x11 8x15 21-17 4-8(C) 29-25
8-11 25-22 5-9 17-13 9-14 13-9 12-16 9-5 16-20 24-19 15x24 28x19 11-15 19-16
{diagram} 7-11?(D) 16x7 2x11 26-23 3-8 30-25 8-12 25-21 12-16 23-18 14x23
27x18 15-19 31-26 10-15 32-28 20-24 26-23 19x26 28x12 26-31 18-14 15-19
12-8 19-24 8-3 24-27 14-10 27-32 3-7 11-15 10-6 1x10 7x14 15-19 14-18 32-27
5-1 19-23(E) WW



Red draws

A – This has perhaps never been played before. But it seems to draw.

B – 26-23 draw, KingsRow.

C – 5-9 17-13 2-6 draw, KingsRow.

D – See the diagram. Good game to here. It may be difficult to foresee, but, after this trade, White loses mobility and will run out of moves. 14-18 draw.

E – The game lasted another 49 moves. In checkers, it is traditional to count 11-15 23-18 as two moves, while it would be one move in chess. So 49 moves would be 25 moves for one player and 24 moves for the other player.

Defiance

Matteo Bernini – Sergio Scarpetta

11-15 23-19 9-14 27-23 (Defiance) 8-11 22-18 15x22 25x9 5x14 29-25 11-15 25-22 7-11 22-18 15x22 26x17
11-15 24-20 15x24 28x19 4-8 30-26 8-11 19-16 12x19 23x7 2x11 26-23 6-9 17-13 3-7 13x6 14-18 23x14
10x17 21x14 1x17 32-28 7-10 28-24 17-22 24-19 11-15 19-16 draw (A. Long – J. Horr, 1923 match, also
R. King – S. Scarpetta, 2012 GAYP WCM)

Mzikabawo Luntonti – Matteo Bernini

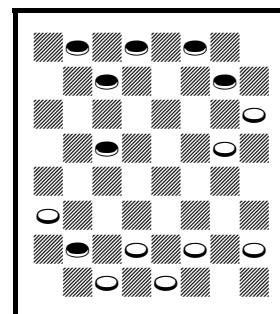
11-15 23-19 9-14 27-23 8-11 22-18 15x22 25x9 5x14 29-25 11-15 25-22 7-11 24-20 15x24 28x19 11-15
32-28 15x24 28x19 6-9 22-18 4-8 31-27 3-7 18-15 1-6 26-22 9-13 22-18 14-17 21x14 10x17 18-14 17-22
23-18 13-17(A) 19-16 12x19 15-10 6x15 18x4(B) 19-24 27-23 24-27 14-9 27-32 23-19 32-27 19-16 draw

A – 22-26 draw, L. Ginsberg – A. Long, 1922 National.

B – Draw CR, F. Smith – J. Armstrong, *Kear's Encyclopedia*, from 10-14 22-18 11-15 CR.

LaVerne Wray – Alex Moiseyev

11-15 23-19 8-11 27-23 9-14(A) 22-18 15x22 25x9 5x14 29-25 11-15 25-22 4-8
22-17(B) 15-18 32-27 12-16(C) 19x12 18-22 24-19 22-25 19-15 10x19 17x10
7x14(D) 23x16 {diagram} 25-29?(E) 30-25 29x22 26x10 6x15 WW



Red draws

A – Defiance.

B – 24-20 draw PP.

C – 18-22 draw, J. Birkenshaw – W. Strickland, 1878 match g.10.

D – 6-15 draw.

E – See the diagram. Red falls into a shot. 2-7 or others probably draw.

Double Corner

Alex Moiseyev – Melikaya Nonyukela

9-14 22-18 5-9 24-19(A) 11-15 18x11 8x24 28x19 4-8 25-22 8-11 22-18 11-16 29-25 7-11 18-15(B) 11x18
21-17 14x21 23x5 16x23 26x19 3-7 25-22 7-11 27-23 6-9 32-28 2-6(C) 28-24 9-13* 31-26(D) 6-9* 22-18
13-17* 24-20* 12-16* 19x12 10-15 20-16 draw

A – More popular than 25-22.

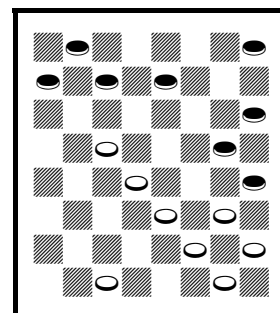
B – 25-22 draw PP.

C – 11-16 draw PP.

D – Looks good. 31-27 draw, *Master Play* p.104 v.2E.

Elia Cantatore – John Webster

11-15 22-17 9-14(A) 25-22 8-11 29-25 11-16 23-18(B) 14x23 27x11 16-20?(C)
31-27 7x16 17-14 10x17 21x14 3-7 22-18 6-10 25-21 10x17 21x14 2-6(D)
26-23(E) {diagram} 16-19?(F) 24x15 6-10 15x6 1x17 18-14 4-8 23-19(G) 8-11
28-24 17-22 32-28 11-16 19-15 16-19 15-10 19-23 27x18 20x27 10x3 27-31
14-10 31-27 10-6 12-16 6-1 16-19 1-6 19-23 6-10 22-26 10-14 26-31 14-17 27-32
17-22 32-27 3-7 5-9 7-10 27-32 10-14 9-13 14-10 32-27 10-15 27-32 18-14 32-27
15-18 27-32 18x27 32x23 22-18 23-27 14-10 27-32 10-7 32-27 7-3 27-32 3-7
32-27 7-10 27-32 10-15 31-27 18-22 27-31 15-18 32-27 30-25 WW



Red draws

A – = 9-14 22-17 11-15.

B – 17-13 draw PP.

C – Weak. 16-19 draw PP.

D – 1-6 WW, J. Jack in *Kear's Encyclopedia* p.339 v.59.

E – 30-25! 6-9 26-23 WW?

F – See the diagram. 6-10 14-9 5-14 18-9 10-14* draw.

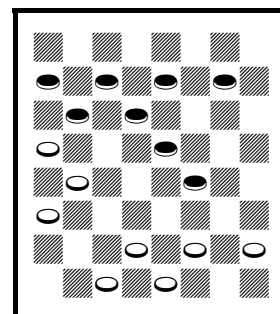
G – 23-18 WW, L. Balderson – J. Ingram, 1980 National.

Colin Price – John Webster

11-15 22-17 9-14 25-22 15-19 (Double Corner Dyke) 24x15 10x19 17x10 6x15 23x16 12x19 21-17 5-9
27-24 2-6 22-18 15x22 24x15 9-13 32-27 6-9 26-23 8-11 15x8 4x11 17-14 9x18 23x14 7-10 14x7 3x10 28-24
1-6 24-19 6-9 27-24 10-14 24-20 14-17 19-16 11-15 16-11 9-14 (15-19 draw, J. Spence, *Kear's Encyclopedia*
p.328 v.14; the draw looks easy) 11-7 15-19 30-26 19-24 7-2 24-27 31x24 22x31 24-19 17-22 19-16 22-26
29-25 26-30 25-21 30-26 16-12 14-18 2-6 26-23 20-16 23-19 16-11 18-23 6-10 23-27 11-7 27-32 12-8 32-27
8-3 27-23 10-14 19-15 7-2 15-18 14-9 31-27 2-7 draw

Colin Price – Mzikabawo Luntonti

11-15 22-17 9-14 25-22 15-19 24x15 10x19 17x10 6x15 23x16 12x19 21-17 5-9
29-25 8-12 25-21 4-8 17-13 2-6 22-17 7-10 27-23 3-7 23x16 12x19 32-27 1-5
{diagram} 26-22(A) 8-12 27-23 19x26 30x23 15-19(B) 23x16 12x19 22-18* 7-11
17-14 10x17 21x14 19-23 28-24 draw



White moves

A – See the diagram. 27-24 draw, B. Brown – G. Bonar, 1899 England v. Scotland from 11-15 22-17 15-19.

B – 12-16 23-18* 7-11 28-24* 16-19* 24-20 draw.

Colin Price – Matteo Bernini

11-15 22-17 9-14 25-22 15-19(A) 24x15 10x19 23x16 12x19 17x10 6x15 21-17 5-9 29-25 8-12 25-21 4-8
17-13 2-6 27-23 7-10 23x16 12x19 32-27 3-7 27-24 10-14 26-23(B) 19x26 30x23 6-10 13x6 14-18 23x14
10x26 31x22 1x10 21-17 7-11 24-20 8-12 17-13 10-14 13-9 14-18(C) 22-17 18-23 17-14 15-18 14-10 11-15
10-7 18-22 7-3 15-18 3-7 22-25 7-10 18-22 28-24 25-30 24-19 23-27 19-15 27-31 15-11 31-27 11-7 22-26
7-2 26-31 9-6 31-26 6-1 27-24 10-15 26-31 1-6 31-26 6-10 26-23 2-7 23-19 15-18 19-23 18x27 24x31 10-15
31-26 7-10 30-25 10-14 25-30 draw

A – Double Corner Dyke.

B – Draw, *Kear's Encyclopedia* p.327R.

C – The draw looks easy.

John Webster – Nicholas Katamba

11-15 22-17 9-14 24-20 15-19 23x16 12x19(A) 25-22 8-12(B) 27-24 4-8 24x15
10x19 17x10 7x14(C) 31-27 8-11 27-23 11-15 23x16 12x19 20-16?(D) 6-10?(E)
32-27?(F) {diagram} 14-18?(G) 16-11 18x25 29x22 5-9 27-24 9-14 26-23* 19x26
30x23 2-6 24-19 15x24 28x19 10-15* 19x10 6x15 22-17 15-18 17x10 18x27 11-7
27-31 21-17 31-26 17-13 26-22 7-2* 22-18 2-6 18-23 6-9 23-19 9-14 19-16 13-9
16-11 14-18 11-7 18-14 7-2 14-18 3-8 9-5 8-12 18-15 12-16 15-11 16-20 10-7
20-24 7-3 24-27 3-7 27-31 7-10 draw

A – = 11-16 24-20 16-19 23-16 12-19 22-17 9-14, Red better.

B – 8-11 draw PP. KingsRow plays 5-9 draw.

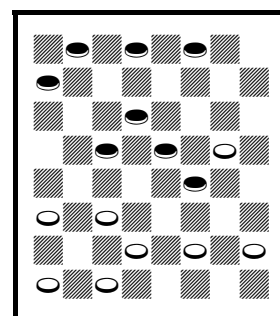
C – 6-15 22-17 5-9 draw, KingsRow.

D – 22-17 6-10 Red better.

E – 5-9! 22-17 15-18 or 14-18 RW.

F – 22-17* Red better.

G – See the diagram. 5-9! 16-11 9-13 RW.



Red wins

Dyke

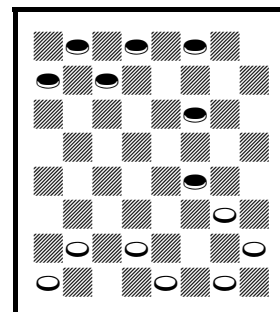
John Webster – Alex Moiseyev

11-15 22-17 15-19(A) 24x15 10x19 23x16 12x19 26-22 7-10 30-26 8-11(B) 17-14
10x17 21x14 9x18 22x8 4x11 27-24 {diagram} 11-15?(C) 32-27 5-9 27-23 WW

A – Dyke.

B – 2-7 draw PP.

C – See the diagram. 3-8* draw, *Lees' Guide* supplement p.253 v.1.



Red draws

Mzikabawo Luntonti – Alex Moiseyev

11-15 22-17 15-19 24x15 10x19 23x16 12x19 25-22 8-11 27-23 4-8 23x16 11x20 22-18 8-11 32-27 9-14
18x9 6x22 26x17 5-9 29-25 11-15 25-22 7-10 30-26 9-14 26-23 2-7(A) 23-19 15x24 28x19 7-11 19-16(B)
11-15 17-13 15-19(C) 22-17* 19-24 27-23* 10-15 17x10 24-27 31x24 20x27 16-11 27-31 11-7 31-26 7-2
26x19 2-6 19-16 6-9 16-11 9-14 15-19 13-9 draw

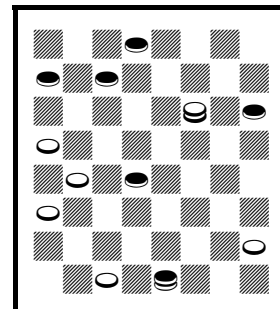
A – 3-7 draw PP.

B – 17-13 draw PP.

C – 14-18 draw, C. Crawford – E. Langdon, 1968 National.

Matteo Bernini – John Webster

11-15 22-17 15-19 24x15 10x19 23x16 12x19 25-22 8-11 27-23 6-10 23x16
11x20 22-18 1-6 17-13 4-8 29-25 7-11(A) 25-22 8-12 26-23 12-16 32-27 3-8
27-24 20x27 31x24 16-20 22-17 20x27 18-14 9x18 23x7 27-31 7-3 8-12 3-8(B)
11-15 8-11 15-18 {diagram} 28-24?(C) 31-27 11-15 27x20 15x22 12-16 22-18
16-19 30-26 20-16 18-22 19-24 26-23 16-11 22-18 24-28 23-19 28-32 18-23
32-28 23-27 28-32 27-23 32-28 23-27 11-8 19-15 8-3 27-23 28-24 23-19 24-20
15-11 6-10(D) RW



White draws

A – 8-11 draw PP.

B – 28-24 draw CR, E. Ingram – K. Hanson, 1976 National from 11-16 21-17
7-11 CR.

C – See the diagram. 17-14 draw.

D – Wins a piece.

Mzikabawo Luntonti – Ron King

11-15 22-17 15-19 24x15 10x19 23x16 12x19 25-22 8-11 30-25 11-15 27-23 4-8 23x16 8-12 22-18 12x19
18x11 7x16 25-22 9-14 17x10 6x15 32-27 5-9 21-17 3-8 27-23 (27-24 draw PP) 8-12 17-13 16-20 13x6 1x10
23x16 12x19 22-18 (22-17 draw, C. Barker – J. Reed, 1889 match) 15x22 26x17 19-23 29-25 23-27 31x24
20x27 25-22 27-31 22-18* 31-26 18-14 26-23 14x7 2x11 draw

Vadym Lapin – John Webster

11-15 22-17 15-19 24x15 10x19 23x16 12x19 25-22 8-11 27-23 4-8 23x16 11x20 32-27 8-11 22-18 9-14
18x9 6x22 26x17 5-9 29-25 11-15 25-22 7-10 30-26 9-14 26-23 2-7 (3-7 draw PP) 23-19 15x24 28x19 7-11
17-13 11-15 27-24 20x27 31x24 14-18 22-17 18-23* 17-14 10x17 21x14 15-18 14-10 23-27 19-15* 27-31
24-19* draw (R. Holmes – T. Goldsboro, 1910 Scotland v. England)

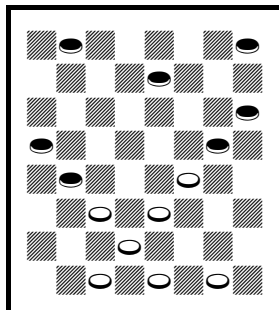
Vadym Lapin – Mzikabawo Luntonti

11-15 22-17 15-19 24x15 10x19 23x16 12x19 25-22 8-11 27-23 4-8 23x16 11x20 22-18 9-14 18x9 6x22
26x17 8-11 29-25 11-15 25-22 5-9 30-26 7-10 17-13 9-14 26-23 2-7 22-17 15-18 31-26 18x27 32x23 10-15
17x10 7x14 26-22* 3-8 22-17 draw (L. Balderson – J. Webster, 1987 GAYP National, by a somewhat
different move-order)

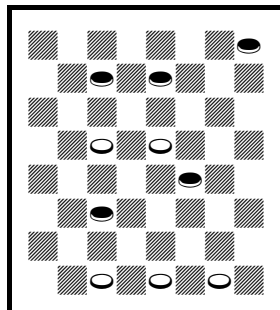
Edinburgh

Nicholas Katamba – Colin Price

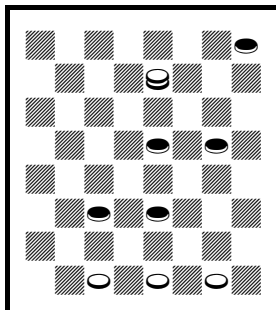
9-13(A) 22-18 6-9(A) 18-14 10x17 21x14 9x18 23x14 11-15(B) 24-19(C) 15x24 28x19 8-11 25-22 7-10?(D) 14x7 3x10 22-18 10-14 18x9 5x14 29-25 2-7 25-22 14-17 27-23 11-16 {diagram} 19-15?(E) 16-19* 23x16 12x19 22-18 17-22* 26x17 13x22 18-14 1-6* {diagram} 15-10(F) 6x15 14-9 7-11 9-6 11-16 6-2 19-23 2-7 {diagram} 15-19?(G) 7-11 16-20 31-27?(H) 22-26 27x18 26-31 18-14 19-23* 14-10 20-24?(I) 10-7 31-26 11-15 24-27 7-3?(J) 27-31 15-19 31-27 3-7 {diagram} 4-8?(K) 7-10 27-31 10-15 31-27 19-16 8-12 30-25 12x19 15x22 WW



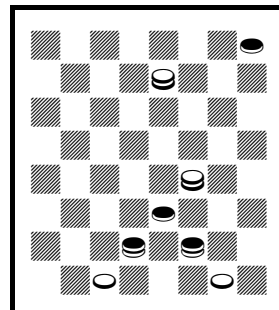
1. White wins



2. White moves



3. Red draws



4. Red draws

A – Weak.

B – 12-16 draw PP.

C – 25-22 draw PP.

D – 11-16 draw, A. Battersby – H. Freedman, 1898 match g.19. 2-6! draw, KingsRow.

E – See the first diagram. 23-18! 7-10 (7-11 18-14 WW) 32-27! 1-6 18-15! 10-14 15-11 WW.

F – See the second diagram. Others draw, but this has winning chances.

G – See the third diagram. 23-26* 30-23 15-19* draw.

H – 32-28 or 11-16 WW.

I – 31-27* 10-7 27-24 7-3 24-19* 3-7 19-24 7-10 24-19 10-14 19-16 draw.

J – 15-18 WW.

K – See the fourth diagram. Red falls into a shot! 27-31 19-24 26-22 draw.

Glasgow

Mark Sokolovsky – Matteo Bernini

11-15 23-19 8-11 22-17 11-16 24-20 16x23 27x11 7x16 20x11 3-7 28-24 7x16 24-20 16-19 25-22 4-8 29-25 9-14 22-18 14x23 17-14 10x17 21x14 2-7 31-27 6-10 27x18 10x17 25-21 1-6 21x14 6-10 30-25 10x17 25-21 19-23 26x19 17-22 19-15 22-26 draw (J. Wyllie – R. Martins, 1863 WCM g.9, also in Lees' Guide)

Mzikabawo Luntonti – Lubabalo Kondlo

11-15 23-19 9-14 22-17 8-11 25-22 11-16(A) 24-20 16x23 27x11 7x16 20x11 3-7 28-24 7x16 26-23 16-19 24x15 10x26 30x23(B) 6-10 23-19 2-6(C) 31-27 5-9 17-13 4-8 27-24 8-11 24-20 11-15 32-28 15x24 28x19 10-15* 19x10 6x15 13x6 1x10 29-25 14-18 draw(D)

A – Glasgow.

B – Or 17-10 draw, as in L. Kondlo – R. Beckwith, 2013 GAYP National.

C – 4-8 draw, W. Reid – W. K. Campbell 1881 match g.1, as in *Robertson's Guide* p.217 v.19.
 D – Final position, R. Beckwith – R. King, 2005 GAYP National twice from 11-15 24-19 15-24.

Alex Moiseyev – Lubabalo Kondlo

11-15 23-19 8-11 22-17 11-16 24-20 16x23 27x11 7x16 20x11 3-7 28-24 7x16 24-20 16-19 25-22 4-8 29-25
 9-14 22-18 14x23 17-14 10x17 21x14 2-7 31-27 6-10 27x18 10x17 25-21 1-6 21x14 6-10 30-25 10x17 25-21
 19-23 26x19 17-22 19-15 22-26 18-14 26-31 15-10 draw (W. Barker – J. Wyllie, 1873 WCM g.12)

Ron King – Melikaya Nonyukela

11-15 23-19 8-11 22-17 11-16 24-20 16x23 27x11 7x16 20x11 3-7 28-24 7x16 24-20 16-19 25-22 4-8 29-25
 19-24 17-13 9-14 26-23 8-11 22-18 5-9 25-22 10-15 32-28 6-10 13x6 2x9 28x19 15x24 22-17 24-28 17-13
 1-6 30-26 28-32 31-27 12-16 27-24 10-15 26-22 6-10 13x6 32-27 18x9 27x25 6-2 16-19 2-7 19x28 7x14
 15-19 (28-32 draw, J. Schwartz – D. Lafferty, 1993 GAYP National) 9-6 11-15 14-10 25-22 6-2 15-18 10-15
 19-24 15-19 22-26 2-7 24-27 19-15 18-23 21-17 27-31 17-13 28-32 13-9 31-27 20-16 draw

Mark Sokolovsky – Lubabalo Kondlo

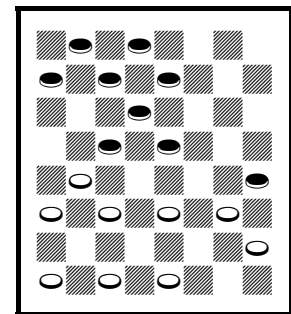
11-15 23-19 8-11 22-17 11-16 24-20 16x23 27x11 7x16 20x11 3-7 11-8 4x11 17-13 9-14 25-22 11-16 22-17
 7-11(A) 31-27(B) 11-15 29-25 16-20(C) 26-23(D) 12-16*(E) 25-22 15-19* 30-26 6-9* 13x6 2x9 17-13*
 10-15* 13x6 1x10 22-17 15-18 17-13 18-22* 26x17 19x26 13-9* 10-15* 17x10 5x14 10-7 15-19 7-2 26-31
 draw(F)

- A – 16-19 draw, L. Kondlo – J. Francis, 2014 National.
- B – 29-25 draw, M. Sokolovsky – R. Beckwith, 2013 GAYP National.
- C – 16-19 draw, J. Webster – R. Beckwith, 2005 NYC.
- D – 25-22 15-18* draw.
- E – 2-7? WW, A. Mantell.
- F – A. Mantell, E. Frazier's *Play Better Checkers* p.17 v.3.

Ron King – Alex Moiseyev

11-15 23-19 9-14 22-17 8-11 25-22 11-16 24-20 15x24 20x11 7x16 27x11 3-7
 11-8(A) 4x11 28-24(B) 11-15 32-28!(C) 12-16(D) 26-23 16-20(E) {diagram}
 30-26?(F) 20x27 31x24 6-9 17-13 14-18 23x14 9x25 29x22 2-6 24-20 10-14
 22-17 14-18 28-24 7-10 20-16 15-19 24x15 10x19 RW

- A – 28-24 draw.
- B – Several draw.
- C – May be the only draw.
- D – May be best.
- E – Or 14-18 23-14 6-9 draw.
- F – See the diagram. 24-19 15-24 28-19 7-11 31-27 may be the easiest draw.



White draws

Mark Sokolovsky – Colin Price

11-15 23-19 8-11 22-17 9-14 25-22 11-16 24-20 (Glasgow) 15x24 20x11 7x16 27x11 3-7 28-24 7x16 24-20
 16-19 26-23 19x26 30x23 4-8 23-19 8-11 29-25 5-9 17-13 11-15 32-28 15x24 28x19 10-15 19x10 6x15 13x6
 1x10 22-17 15-19 draw (J. Drummond 1853 p.68)

Laird and Lady

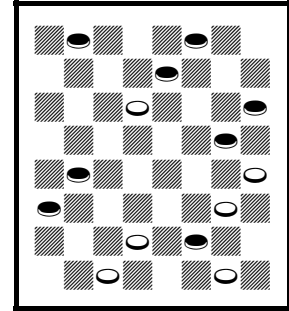
Sergio Scarpetta – Mark Sokolovsky

11-15 23-19 8-11 22-17 9-13(A) 17-14 10x17 21x14 15-18 26-23 13-17 31-26
 17-21 25-22 18x25 29x22 11-16 22-17 4-8 14-10 6x15 19x10 7x14 17x10 8-11
 24-20 5-9 27-24!(B) 9-13 24-19 13-17* 28-24 2-7* 19-15* 11x27 {diagram}
 20x2?(C) 27-31 26-23 31-27 RW

A – Laird and Lady.

B – Maybe safer than 28-24 draw PP.

C – See the diagram. 32-23 draw, C. Reno's *Work of the Pentium* p.68F.



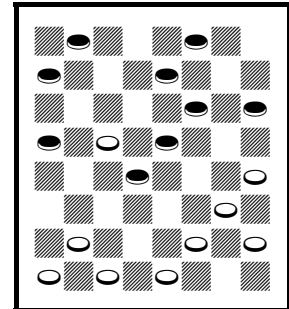
White draws

Melikaya Nonyukela – Matteo Bernini

11-15 23-19 8-11 22-17 9-13 17-14 10x17 21x14 15-18 26-23 4-8 24-20 11-15
 19x10 6x15 28-24 8-11 23-19?(A) 2-6 19x10 6x15 32-28 {diagram} 12-16(B)
 25-22 18x25 29x22 1-6* 27-23 6-10* 14-9 5x14 24-19 15x24 28x12 11-15* 20-16
 14-18 23x14 10x26 31x22 7-10 16-11 10-14 11-8* 14-18 8-4* 18x25 30x21 15-18
 4-8 18-23 8-11 23-26 11-15 26-30 15-18* 30-25 18-15* 25-22 draw

A – 25-21 draw, A. Anderson 1852 p.38 v.3.

B – See the diagram. Good, but 13-17! may be even stronger, *Master Play* p.203 v.15D.



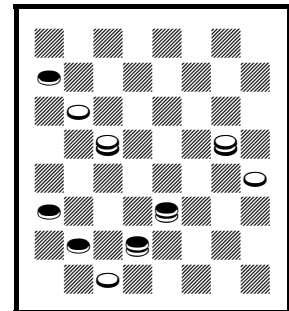
Red moves

Sergio Scarpetta – Lubabalo Kondlo

11-15 23-19 8-11 22-17 9-13 17-14 10x17 21x14 15-18 24-20 4-8 27-23 18x27
 32x23 11-15 19x10 6x15 23-18 15x22 25x18 1-6 29-25 8-11 28-24 13-17 25-22
 17-21 22-17 6-10 26-22 10-15 31-26 7-10(A) 14x7 3x10 26-23 12-16* 18-14 2-7*
 22-18 15x22 24-19* 22-25 19x12 11-15 12-8 25-29 8-3 15-18* 23-19 18-23 17-13
 10x17 3x10 29-25 10-14 25-22 19-16 23-27 16-11 27-32 11-7 32-27 13-9 27-23
 7-3 22-26 3-7 17-22 7-11 22-25* 11-16 {diagram} 23-27?(B) 30x23 27x18 14x23
 5x14 23-26 25-29 16-19 29-25 20-16 14-17 26-30 WW

A – 12-16 draw, *Robertson's Guide* p.31 v.250.

B – See the diagram. 23-18* 30-23* draw.



Red draws

Old 14th

LaVerne Wray – Colin Price

11-15 23-19 8-11 22-17 4-8(A) 17-13 15-18 24-20 9-14 26-23 11-15 28-24 8-11
 31-26 5-9 21-17 14x21 23x5 15-18 26-23 18-22 25x18 10-15 19x10 6x22 23-18
 7-10 24-19 3-7 27-23 11-16 20x11 7x16 18-15(B) 10-14* 15-11 22-26* 11-8
 26-31* 19-15 31-26(C) {diagram} 23-19?(D) 16x23 8-3 26-22 15-11 22-17 3-8
 14-18 29-25(E) 23-26! 30x14 17x10 25-22 10-7 22-18 7x16 18-14 21-25?(F)
 14-10 25-30 RW(G)

A – Old 14th.

B – 32-28 White better, PP.

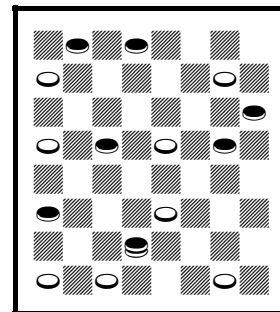
C – 31-27 should draw, J. Dykes – J. Labadie, 1878 Canadian match.

D – See the diagram. 15-11! 26-19 8-4 draw.

E – Hastens the end, but everything loses.

F – 16-19! 8-11 19-23 14-10 23-18 10-7 12-16 RW.

G – Time forfeit, but the position is a draw.



White draws

LaVerne Wray – Mark Sokolovsky

11-15 23-19 8-11 22-17 4-8 25-22 9-13 27-23 6-9 23-18 9-14 18x9 5x14 26-23 1-6 30-25 15-18 22x15 11x27
 32x23 13x22 25x9 6x13 29-25 13-17 21x14 10x17 19-16 12x26 31x13 8-11 24-19 11-15 19x10 7x14 draw
 (H. Coltherd – R. Martins, 1849 match g.15)

Lubabalo Kondlo – Melikaya Nonyukela

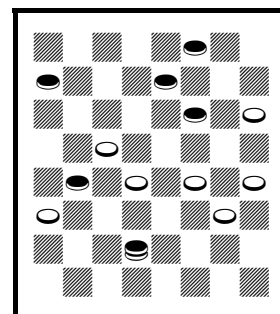
11-15 23-19 8-11 22-17 4-8 25-22 9-13 27-23 6-9 23-18 9-14 18x9 5x14 26-23 1-6 30-25 15-18 22x15 11x27
 32x23 13x22 25x9 6x13 29-25 8-11 (13-17 draw PP) 25-22 11-15 24-20 15x24 28x19 7-11 22-18 (31-27
 draw PP) 3-7 18-14 10x17 21x14 draw (J. Drummond 1866)

LaVerne Wray – Lubabalo Kondlo

11-15 23-19 8-11 22-17 4-8 17-13 15-18 24-20 11-15 28-24 9-14 26-23 8-11
 31-26 6-9 13x6 2x9 26-22 1-6 22-17 18-22 25x18 15x22 23-18 14x23 27x18 9-13
 17-14 10x17 21x14 6-10 30-25 10x17 25-21 22-26 21x14 12-16 19x12 26-30
 24-19 30-26 29-25 26-30 25-21 30-26 32-28 13-17(A) 28-24 {diagram} 26-23?(B)
 19-15 23-26 15x8 26-22 18-15 22-18 15-10 18x9 21x14 9x18 10-6 7-10 6-1 10-15
 8-4 18-14 1-6 14-10 24-19 10x1 19x10 5-9 4-8 9-14 8-11 14-18 11-15 18-23
 20-16 23-26 15-18 WW

A – 26-30 draw, T. Menzies – J. Wyllie, *British Draughts Player* p.1.

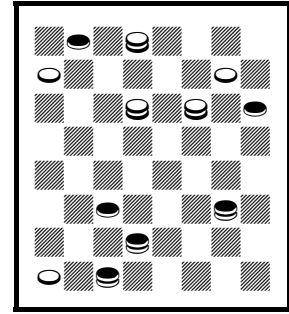
B – See the diagram. 17-22* 19-15 22-25 15-8 26-22 draw.



Red draws

Lubabalo Kondlo – Alex Moiseyev

11-15 23-19 8-11 22-17 4-8 17-13 15-18 24-20 9-14 26-23 11-15 28-24 8-11
 31-26 5-9 21-17 14x21 23x5 15-18 26-23 18-22 25x18 10-15 19x10 6x22 23-18
 7-10 24-19 3-7 27-23! 11-16* 20x11 7x16 32-28 2-6*(A) 18-15 22-26* 28-24(B)
 26-31* 24-20 31-27 20x11 27x18 30-26 18-23 11-7 23x16 15-11 16-19* 11-8
 10-15 7-2 6-10(C) 26-22 10-14 22-17 14-18 17-14 18-22 14-10 19-23 2-7 23-26
 7-11 15-18 13-9 18-23 9-6 23-27 6-2 21-25 10-7 25-30 7-3 27-32 3-7 32-27 7-10
 27-24 {diagram} 8-3(D) 24-20 2-6 12-16 6-9 26-23 3-8 30-26 8-12 16-19 10-6
 1x10 11-15 23-18 15x6 18-15 5-1 20-16 12-8 19-24 6-2 16-11 9-14 11x4 14-18
 15-10 18x25 24-27 2-6 10-14 1-5 4-8 6-9 26-23 9x18 23x14 25-22 8-11 29-25
 11-15 25-21 15-10 22-17 27-31 17-13 10-6 13-17 14-10 17-14 10x17 21x14 31-26
 5-1 6-2 draw



White moves

A – 22-26? 28-24 WW, J. Drummond 1866, as in *Lees' Guide* p.106y.

B – 15-11 draw PP.

C – 6-9 draw, D. Oldbury, R. Pask's *21st Century Checkers* opening #102 v.9.

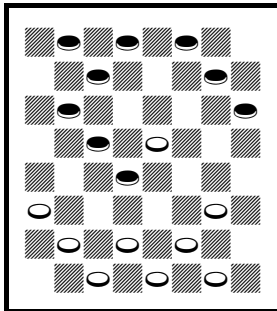
D – See the diagram. The draw looks mundane, with no big threats, except that many kings make calculation difficult and time-consuming.

Lubabalo Kondlo – Matteo Bernini

11-15 22-17 8-11 23-19 4-8 25-22 9-13 27-23 6-9 23-18 9-14 18x9 5x14 26-23 1-6 30-25 15-18 22x15 11x27
 32x23 13x22 25x9 6x13 29-25 8-11 25-22 11-15 24-20 15x24 28x19 7-11 22-18 3-7 18-14 10x17 21x14
 13-17 19-16 draw (J. Drummond 1866)

Nicholas Katamba – Elia Cantatore

11-15 23-19 8-11 22-17 9-14 25-22 4-8(A) 29-25(B) 15-18(C) 22x15 11x18 19-15(D) 10x19 24x15 5-9!
 17x10 7x14 28-24 {diagram} 3-7?(E) 24-19 7-11 26-22(F) 9-13 27-24! 11-16 15-10! 16x23! 22x15
 {diagram} 12-16(G) 24-20 16-19 20-16 8-12 16-11 12-16 11-8 16-20 8-4 19-24 31-26 23-27(H) 32x23 24-27
 25-22 27-31 15-11 6x15 23-18 14x23 26x10 2-6 10-7 6-10 22-18 10-15 18-14 31-27 7-2 27-23 14-10 23-18
 11-7 15-19 7-3 19-23 3-7 23-27 10-6 WW(I)



Red draws

A – Maybe this is a variation of the Old 14th. 11-16 Glasgow or 6-9 Souter are standard.

B – 17-13 White better, PP.

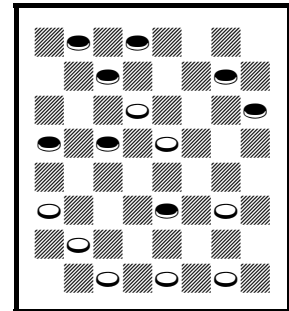
C – 6-9 draw PP.

D – Or 17-13 White better PP.

E – See the first diagram. 2-7 White better, A. Battersby – J. Kirk, 1896 Scottish Ty.

F – Complicates. 27-24 WW.

G – See the second diagram. 14-18! 31-26 (31-27! 6-9 15-11 8-15 25-22 18-25 27-11 White strong) 18-22! 25-18 23-27 32-23 8-11 draw.



Red draws

H – The right move, but the game is lost.

I – Good game.

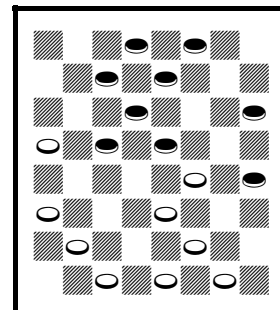
Second Double Corner

Lubabalo Kondlo – LaVerne Wray

11-15 24-19 15x24 28x19 8-11 22-18 11-16 25-22 16-20 22-17 4-8 17-13 8-11
26-22 9-14 18x9 5x14 22-18 1-5 18x9 5x14 29-25 11-15 {diagram} 25-22?(A)
15x24 22-18 14-17 21x14 10x17 18-14(B) 17-22 23-18 7-10 14x7 2x11 18-14
11-16 14-9 6-10 9-6 10-15 6-2 15-19 2-6 22-26 31x22 24x31 6-10 31-26 30x23
19x26 10-15 26-31 22-17 31-26 15-18 20-24 18-22 26-23 22-25 24-27 25-30
27-31 17-14 RW

A – See the diagram. This is a published loss. 32-28 draw.

B – Lasts longer than 32-28 RW PP.



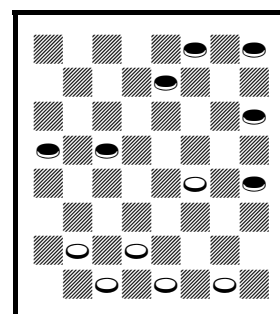
White draws

Ron King – LaVerne Wray

11-15 24-19 15x24 28x19 8-11 22-18 11-16 25-22 16-20 22-17 9-13 17-14 10x17
21x14 6-10 14-9 5x14 18x9 1-5 9-6 2x9 29-25?(A) 9-14 23-18 14x23 27x18
10-14 18x9 5x14 {diagram} 19-15?(B) 7-11 15x8 4x11 25-22 3-7 32-28 11-16
RW

A – 23-18 draw PP, as in *Kear's Encyclopedia*.

B – See the diagram. 25-22 7-10 26-23 14-17 22-18 17-22 18-15 10-14 15-10
14-17 23-18 17-21 or 3-8 probably a draw.



White draws?

Mark Sokolovsky – LaVerne Wray

11-15 24-19 15x24 28x19 8-11 22-18 9-14 18x9 5x14 25-22 11-15 32-28 15x24 28x19 7-11 22-18 1-5 18x9
5x14 29-25 4-8 (or 11-15 draw PP) 25-22 11-15 22-18 15x22 26x17 8-11 30-26 11-15 26-22 15x24 27x20
3-7 23-19 7-11 20-16 draw (Shearer's Handbook p.185 v.5)

Elia Cantatore – LaVerne Wray

11-15 24-19 15x24 28x19 8-11 22-18 9-14 18x9 5x14 25-22 11-15 32-28 15x24 28x19 4-8 22-18 8-11 18x9
6x13 29-25 11-15 27-24 7-11 25-22 11-16 21-17 16-20 17-14 10x17 19x10 20x27 31x24 2-7 (12-16 draw
PP) 22-18 7x14 18x9 17-22 26x17 13x22 23-19 3-7 (3-8 draw, J. Robertson – J. Wyllie, *Robertson's Guide*
p.257 v.2) 19-15 7-10 15x6 1x10 24-19 10-14 draw

Sergio Scarpetta – Ron King

11-15 24-19(A) 15x24 28x19 9-14(B) 22-18 5-9 26-22 7-11 27-24 11-16 22-17 16-20 31-27 3-7 19-15 10x26
17x3 26-31 21-17(C) 6-10 27-23 20x27 18-14 9x18 23x7 2x11 32x23 31-27 23-18 11-15 18x11 8x15 3-7
15-18 7-11 18-23* 25-22 27-24 17-14 24-20 14-10 12-16 10-7 16-19 7-3 23-27 3-7 19-23 22-17 27-31 17-13
23-27 29-25 27-32 25-22 32-27 22-17 27-23 13-9 draw

A – Second Double Corner.

B – 8-11 draw PP.

C – 18-15 draw PP. 32-28 draw, C. Nash – A. Moiseyev, 2003 GAYP National.

Matteo Bernini – Ron King

11-15 24-19 15x24 27x20(A) 9-14 28-24 8-11 22-18 5-9 24-19 11-16 20x11 7x16
 26-22 16-20 31-27 4-8 22-17(B) 8-11 17-13 10-15 19x10 6x22 13x6 2x9 25x18
 11-16 18-15 16-19 23x16 12x19 15-10 19-24 27-23 24-27 23-19 27-31 {diagram}
 29-25(C) 14-18 19-15 9-14(D) 15-11 20-24(E) 11-7 24-27 32x23 18x27 25-22
 27-32 7-2 32-27 22-17* 14-18 2-6* 18-23 6-9* 31-26 30-25* 26-30 17-14 23-26
 25-22 26-31 22-17 1-5 9-13 31-26 10-6 draw

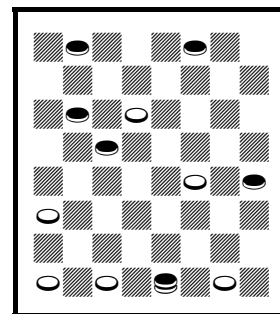
A – Considered somewhat weak, and is a favorite of King’s.

B – = 10-14 24-19 (or 22-17 6-10 24-19 = same) 6-10 22-17 9-13 28-24 13-22
 25-9 5-14 26-22 11-15 22-17 7-11 29-25 11-16 17-13 2-6 CR.

C – See the diagram. 19-15 draw, J. Ferrie – J. Buchanan, 1914 Scottish Ty. and earlier.

D – 18-23 15-11* 31-27 11-7 27-24 7-2* 24-19 2-6* draw.

E – Or 18-23 draw.



White moves

LaVerne Wray – Ron King

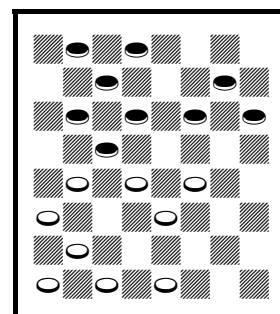
11-15 24-19 15x24 27x20 9-14 28-24 8-11 22-18 5-9 24-19(A) 3-8 32-28 11-16
 20x11 8x24 28x19 4-8(B) 26-22 7-11(C) 22-17* {diagram} 11-16(D) 17-13 16-20
 31-27 8-11* 25-22* 10-15 19x10 6x15 13x6 2x9 30-25* 15-19 23x7 14x32 7-2
 12-16 2-7 32-27 22-18 9-13 7-10 16-19 18-15 19-23 21-17 13x22 25x18 23-26
 15-11 26-30 11-7 20-24 7-2 24-28 2-6 27-23 18-15 23-18 15-11 18-14 10x17 1x10
 draw

A – = 9-14 24-19 11-15 27-24 5-9 24-20 15-24 28-19 8-11 22-18. 25-22 draw PP.

B – 7-11 Red strong, KingsRow.

C – 8-11! draw, T. Duncan – W. Kilgour, *Crossboard News* g.57.

D – 10-15 draw, *Kear's Encyclopedia* p.380 v.23.



Red moves

Single Corner

Melikaya Nonyukela – Sergio Scarpetta

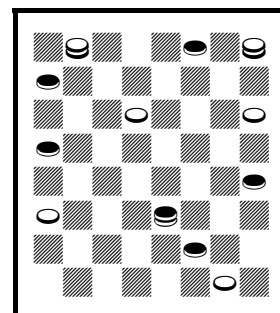
11-15 22-18 15x22 25x18 12-16 29-25 9-13 24-19 16-20 28-24 8-11 19-16 4-8
 16-12 5-9 26-22 10-14 18-15 11x18 22x15 7-10 24-19 1-5 30-26 2-7 26-22 14-17
 21x14 10x26 31x22 9-14 25-21 6-9 22-18 13-17 15-10 17-22 10-6 22-26 19-15(A)
 26-30 23-19 14x23 27x18 30-26 19-16 7-10 16-11 10x19 11x4 26-23 18-15 19-24
 15-10 24-27 6-1 9-13 {diagram} 1-6?(B) 13-17! 21x14 23-18 32x23 18x2 4-8
 20-24* 8-11 24-27* 11-16 2-7* 10-6 7-10* 6-2 10-15* 16-20 27-31 20-24 31-26*
 23-19 15-11 24-27 26-22* 2-6(C) 22-18 RW(D)

A – 19-16 draw, P. Ketchum in *Duffy's Single Corner* v.60D.

B – See the diagram. This allows a surprise shot. 4-8 or 10-6 draw.

C – 27-23 5-9 2-6 9-13 6-9 13-17 9-6 17-21 6-9 21-25 9-6 25-30 6-9 22-17! RW.

D – Continue 19-15 11-7 RW.



White draws

Melikaya Nonyukela – Nicholas Katamba

11-15 22-18 15x22 25x18 9-13 29-25 12-16 24-19 16-20 19-16(A) 8-12 25-22
12x19 23x16 4-8 27-23(B) 8-11(C) {diagram} 16-12?(D) 11-16 31-27(E) 6-9
28-24 10-14 30-25 7-10 32-28 2-7 18-15 10x19 24x15 7-10 15x6 1x10 22-18
16-19 23x16 14x30 16-11 10-14 11-8 30-26 8-4 26-22 25x18 14x32 RW

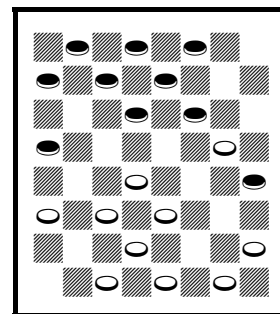
A – A little weak. 28-24 draw PP.

B – 26-23 or 28-24 draw in *Master Play*, p.410 v.16A.

C – 5-9 may be strong.

D – See the diagram. 30-25 draw.

E – 23-19 loses.



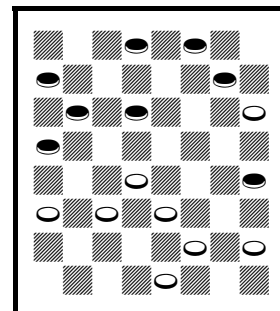
White draws

Melikaya Nonyukela – Vadym Lapin

11-15 22-18 15x22 25x18 9-13 29-25 12-16 25-22 16-20 18-15 10x19 24x15 8-12
22-18 7-10(A) 23-19 5-9 27-23 4-8 32-27 1-5 26-22 12-16 19x12 10x26 30x23
6-10 {diagram} 27-24?(B) 20x27 31x24 8-11 24-19 11-16 18-15 10-14 22-18 2-6
15-11 13-17 11-8 17-22 8-4 22-26 4-8 26-30 8-11 16-20 11-15 20-24 19-16 24-27
16-11 27-32 11-8 32-27 8-4 9-13 18x2 27x11 2-6 30-26 6-10 5-9 10-6 26-23
28-24 23-18 24-20 9-14 6-1 14-17 21x14 18x9 1-5 9-14 5-1 13-17 1-6 17-22 6-1
22-26 1-6 26-31 6-1 31-26 1-6 26-22 6-1 22-18 1-6 18-15 6-1 15-10 1-5 10-6 5-1
14-10 1-5 6-1 5-9 1-5 9-13 10-15 13-17 15-18 RW

A – 4-8 draw PP.

B – 23-19* draw, G. Dearborn, *Pierce's Single Corner* v.90.



White draws

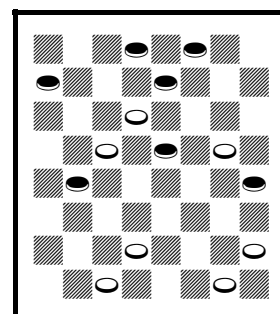
Lubabalo Kondlo – Mzikabawo Luntonti

11-15 22-18 15x22 25x18 12-16 29-25 9-13 18-14 10x17 21x14 16-20 23-18 6-10 25-21 10x17 21x14 1-6
26-23 13-17 31-26 17-21 18-15 draw (PP)

Melikaya Nonyukela – Mzikabawo Luntonti

11-15 22-18 15x22 25x18 9-13 29-25 12-16 18-14 10x17 21x14 16-20 23-18 6-10
25-21 10x17 21x14 13-17 24-19 1-6 27-23 8-12 31-27 4-8 18-15 6-9 15-10 9x18
23x14 8-11 27-23 11-15 19-16* 12x19 23x16 {diagram} 20-24(A) 28x19 15x24
16-12* 17-22* 26x17 5-9 14x5 7x21 5-1 24-28* 1-5 2-6* 5-1 6-9 1-6 9-14 6-10
14-17* draw

A – This looks sharper than 17-21 draw, T. Ballantyne, in *Master Play*.



Red moves

John Webster – Elia Cantatore

11-15 22-18 15x22 25x18 12-16 29-25 8-12 25-22 4-8 22-17(A) 16-20(B)
17-13(C) 9-14 18x9 5x14 24-19 8-11 26-22(D) 14-17 21x14 10x26 31x22 7-10
30-25 11-16?(E) {diagram} 22-18?(F) 20-24 27x11 10-15 19x10 6x29 11-8 12-16
8-4 29-25 28-24 16-20 24-19 25-22 19-16 22-26 23-18 26-23 18-14 23-18 14-9
18-14 9-5 14-10 16-12 20-24 4-8 10-15 32-28 15-19 8-4 2-6 4-8 19-23 28x19
23x16 RW

A – 24-20 may be the preferred move, A. Anderson 1848 and 1852.

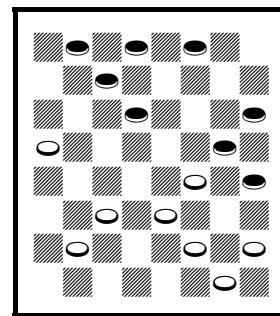
B – 8-11 Red better, *Duffy's Single Corner* v.54F.

C – 26-22 may draw.

D – 23-18 or 19-16 RW, *Robertson's Guide*, although 19-16 may draw.

E – 10-14* 25-21 3-7* RW.

F – See the diagram. This falls into a shot. 25-21* 3-8 22-18 draw.



White draws

Ron King – Sergio Scarpetta

11-15 22-18 15x22 25x18 12-16 29-25 16-20 18-14 10x17 21x14 9x18 23x14 6-10 25-21 10x17 21x14 1-6
26-22 8-11 24-19 4-8 27-23 6-10 30-26 10x17 22x13 11-15 19x10 7x14 26-22 14-17 23-19 17x26 31x22
8-11(A) 22-18 3-7 18-14 2-6 13-9 6x13 28-24 20x27 32x23 13-17 23-18 draw(B)

A – 3-7 draw, J. Kear – A. Jackson, 1910 Scotland v. England and R. King – R. Beckwith, 2010 GAYP WCM g.23.

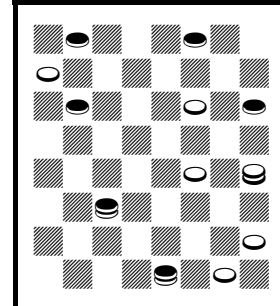
B – *Denvir's Guide*, second g.14 note B.

Mark Sokolovsky – Elia Cantatore

11-15 22-18 15x22 25x18 12-16 29-25 10-14 25-22 16-20 24-19 6-10 22-17 9-13
18x9 13x22 26x17 5x14 30-26 8-11 26-22 4-8 17-13 14-17 21x14 10x26 31x22
8-12 22-18 11-16 13-9?(A) 7-10 9-5 2-6 18-15 10-14 15-11 14-17 11-8 17-22 8-4
22-26 4-8 26-30 19-15?(B) 30-26 23-18 26-31 27-23 31-26 23-19 16x23 RW

A – 19-15 draw, J. Scott – C. Jolly, 1922 National.

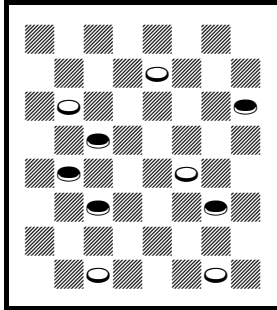
B – 8-11 30-26 27-24 20-27 11-20 27-31 23-18 26-22 18-15 6-9 15-11 {diagram}
looks depressing for White, but Red may not be able to accomplish anything.



Red draws?

Vadym Lapin – Sergio Scarpetta

11-15 22-18 15x22 25x18 12-16 29-25 10-14 24-19 16-20 28-24 8-11 19-16 6-10 25-22 9-13 18x9 5x14
22-18 1-5(A) 18x9 5x14 26-22 14-17 21x14 10x26 31x22 11-15 23-19 4-8 19x10 7x14 24-19 14-17 22-18
17-22 18-15(B) 2-7!(C) 27-23 8-11 15x8 3x12 23-18 20-24* 18-14 13-17* 14-9 7-10 16-11 10-14 11-7
{diagram} 14-18?(D) 7-3 18-23 3-7 24-27 7-10 27-31 9-6 17-21 {diagram} 10-14?(E) 22-25 14-17 31-27
19-15 27-24* 15-10 12-16* 17-22 25-29 22-26(F) 24-19 26-31 29-25 6-2(G) 25-22* 32-28 23-26 30x23
19x26 28-24 16-20 31-27 26-31 2-7 21-25 7-11 25-30 11-16 22-26 draw



Red draws

A – 14-17 may be stronger, G. Jewitt – J. Moir, 1894 Scotland v. England, as in *Duffy's Single Corner* v.81.
 B – 16-12 draw, R. King – A. Moiseyev, 2000 GAYP WCM g.10.

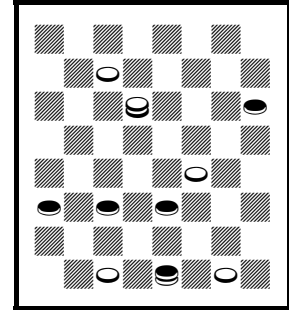
C – 13-17 should draw, R. King – S. Scarpetta, 2012 GAYP WCM g.20.

D – See the first diagram. 22-26!! 30-23 24-27 19-15 12-16 draw.

E – See the second diagram. 19-15 31-27 10-14 22-26 14-18 WW.

F – 10-7 24-19* draw.

G – 31-26 16-20 10-7 20-24 6-2 24-27 draw.



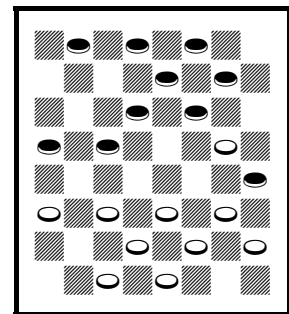
White wins

Vadym Lapin – Elia Cantatore

11-15 22-18 15x22 25x18 12-16 29-25 10-14 25-22 16-20 24-19 6-10 28-24 8-11 32-28?(A) 4-8 19-16 9-13 18x9 5x14 {diagram} 16-12?(B) 11-15 24-19 15x24 28x19 8-11 22-18 11-15 18x11 7x16 26-22 2-7 22-18 1-5 18x9 5x14 30-25 14-18 23x14 10x17 21x14 16x32 RW

A – 19-16 draw, J. Sturges 1800 g.4.

B – See the diagram. 22-17 13x22 26x17 2-6 30-25? (24-19! 8-12 30-26* 11-15 16-11* 7-16 26-22 15-24 28-19 draw!, with several possible continuations) 6-9 17-13 10-15 13x6 1x10 16-12 (31-26 15-18 26-22 16-12 8-11 22-17 11-16 RW) 11-16 25-22 14-18 23x14 10x26 31x22 7-11 22-17 16-19 17-13 11-16 13-9 8-11 9-6 19-23 RW, J. Drummond, *Master Play* p.427 v.37D



White draws

LaVerne Wray – Nicholas Katamba

11-15 22-18 15x22 25x18 12-16 29-25 10-14 25-22 16-20 24-19 8-12(A) {diagram} 19-16?(B) 12x19 23x16 14x23 26x19 4-8 16-12 6-10!(C) 27-23(D) 8-11 19-16 9-14 22-17 11-15 28-24 20x27 31x24 15-18 24-20 18x27 32x23 10-15 17x10 7x14 16-11 15-18 23-19(E) 18-23 11-8 23-27 8-4 27-31 4-8 31-27 8-11 27-24 11-15 2-6 19-16 6-10 15x6 1x10 16-11 10-15 11-8 15-18 8-4 24-19 4-8 5-9 20-16 18-22 8-11 9-13 11-8 22-25 8-4 25-29 16-11 19-16 11-7 3x10 12-8 16-11 8-3 10-15 3-8 29-25 30-26 14-18 26-22 25-30 22-17 13x22 21-17 RW

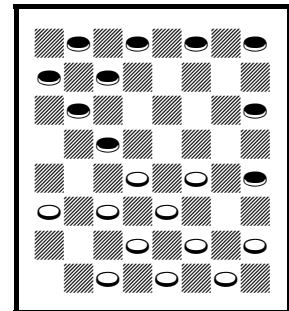
A – 6-10 draw PP.

B – See the diagram. 19-15 draw, W. Payne 1756 games 7 and 8.

C – 9-14? draw?, K. Hanson – E. Fuller, 1977 Lakeside.

D – 22-18 should have lost, I. Keder – T. Novotny, 2005 World Qualifier.

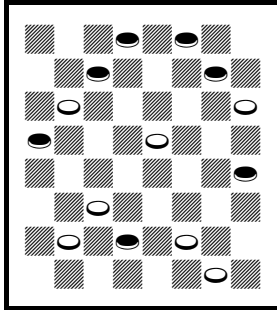
E – Not much hope for White.



White draws

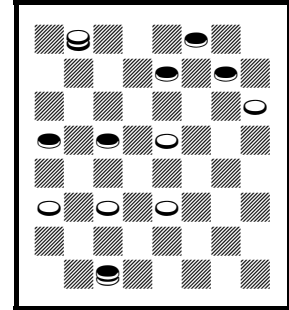
Mzikabawo Luntonti – Vadym Lapin

11-15 22-18 15x22 25x18 12-16 29-25 10-14 24-19 16-20 28-24 6-10 25-22 8-11 19-16 9-13 18x9 5x14 22-18(A) 14-17(B) 21x14 10x17 26-22?(C) 17x26 31x22 4-8 16-12(D) 7-10 24-19* 11-16 30-25* 1-6! 18-15?(E) 10-14 23-18(F) 16x23?(G) 18x9 23-26 {diagram} 9-5?(H) 2-7! 25-21(I) 26-30 27-24(J) 20x27 32x23 6-9 5-1 9-14?(K) {diagram} 1-5?(L) 30-25 15-11 7x16 22-18 16-19 23x16 14x23 5-9 13-17 21x14 8-11 16x7 3x17(M) RW



White draws

- A – 24-19 draw PP.
- B – Strongest.
- C – 24-19! draw, G. Jewitt – J. Moir, in *Duffy's Single Corner* and elsewhere.
- D – 32-28 may be safer?
- E – 32-28* 6-9 18-15* 10-14 25-21* 14-18 Red strong, may be a RW?
- F – 25-21 14-17! 21-14 6-10 RW.
- G – 14-23 RW.
- H – See the first diagram. 25-21!! (or 27-24 draw) 26-30 27-24 20-27 32-23 30-25 23-18 draw.

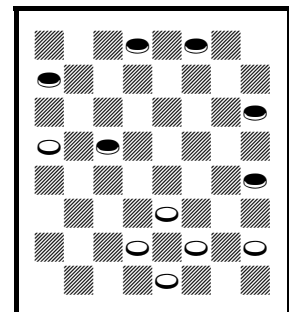


White draws

- I – 22-18 26-30 RW.
- J – 27-23 loses.
- K – 30-25 22-18 25-22 1-6 22-26 RW.
- L – See the second diagram. 15-10* 30-26 23-19* 26-17 10-6* 7-11 6-2* 17-22 1-6* 14-18 2-7* 3-10 12-3* draw, regaining the piece.
- M – A wild and interesting game. White should resign about now, but the game continued for 48 more moves.

John Webster – Vadym Lapin

11-15 22-18 15x22 25x18 12-16 29-25 8-12 18-14 9x18 23x14 10x17 21x14 16-20 24-19 6-9(A) 26-23 9x18 23x14 1-6 25-22 4-8 27-23 6-10 30-26 10x17 22x13 8-11 32-27 11-15 19x10 7x14 {diagram} 23-19(B) 14-18 19-16 12x19 27-23 18x27 31x15 2-7 26-23 3-8 23-18* 7-11 15-10 11-16 10-7 8-12 7-3 20-24 28x19 16x23 18-14 12-16 13-9 23-27 9-6 27-31 6-2 16-20 2-6 20-24 14-10 24-28 10-7 28-32 7-2 32-28 draw



White moves

A – 4-8 draw, J. Drummond 1861 p.21.

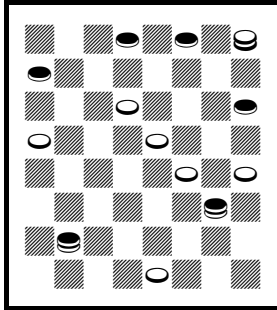
B – See the diagram. 26-22 draw, J. Ferrie – L. Benson, 1899 Scotland v. England.

Matteo Bernini – Mzikabawo Luntonti

11-15 22-18 15x22 25x18 12-16 29-25 10-14 24-19 16-20 28-24 8-12 26-22 7-10 31-26 4-8 32-28 3-7 18-15 14-18 23x14 9x18 26-23 7-11 23x7 11x18 22x15 2x18 19-16 12x19 24x15 6-10 15x6 1x10 21-17 8-11 30-26 5-9 26-23 9-14 17-13 10-15 13-9 (28-24 draw, C. Hefter – J. Reed, 1889 match g.39) 11-16 28-24* 14-17* 23x14 16-19 27-23 19x28 25-21 28-32 23-18 draw

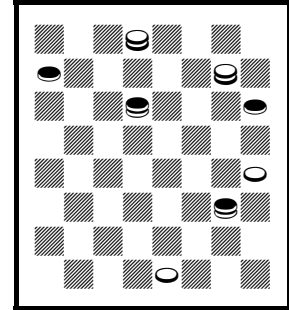
Colin Price – Vadym Lapin

11-15 22-18 15x22 25x18 12-16 29-25 10-14 24-19 16-20 28-24 8-12(A) 19-15(B) 4-8 25-22 7-11 22-17 11-16 17x10 16-19 23x16 12x28 26-22 9-14 18x9 5x14 27-23 20-24 30-26(C) 8-12(D) 22-18 6-9 32-27* 28-32 27x20 32-28 15-11 28-24 18-15 1-5 23-19 14-17 21x14 9x18 11-8 18-23 26-22 23-26 8-4 26-30 22-17 30-25 17-13?(E) {diagram} 25-22?(F) 4-8(G) 22-18 8-11 3-8 11x4 18x11 19-15* 11x18 10-6 2x9 13x6 18-15 6-2?(H) 15-10 4-8 {diagram} 10-6?(I) 2x9 5x14 8-11?(J) 24-19 31-26 14-18 11-7 19-15 7-3 15-11 RW



Red wins

- A – 8-11 draw PP.
- B – Or others.
- C – 22-18 draw PP, as in *Duffy's Single Corner* v.82.
- D – 6-9 may be easier.
- E – Right idea. 4-8* 25-22 17-13* = same.
- F – See the first diagram. 2-7 10-6 7-11 15-8 24-15 6-2 25-22! RW.
- G – 10-6 may be easier.
- H – 6-1 draw.
- I – See the second diagram. 24-19! 8-11 19-15 RW.
- J – 31-26 (or 8-4 14-18 31-26 or 4-8 draw) 14-18 8-4*!



Red wins

draw.

Ron King – Matteo Bernini

11-15 22-18 15x22 25x18 12-16 18-14 9x18 23x14 10x17 21x14 6-10 29-25 10x17 25-21 1-6 21x14 8-11 26-22 16-20 24-19 4-8 27-23 6-10 31-26 10x17 22x13 11-15 19x10 7x14 26-22 14-17 23-19 17x26 30x23 8-11 23-18 3-7 18-14 2-6* 13-9 6x13 28-24 20x27 32x23 draw (*Denvir's Guide* second game 14 note B, as in the R. King – S. Scarpetta game above)

LaVerne Wray – Elia Cantatore

11-15 22-18 15x22 25x18 12-16 18-14 9x18 23x14 10x17 21x14 6-10 29-25 10x17 25-21 16-20 21x14 1-6 26-22 6-10 30-26 10x17 22x13 8-11 26-22 4-8 24-19 8-12 19-16 12x19 27-24 20x27 31x8 3x12 28-24 12-16 22-18 7-10 24-20 16-19 (5-9 draw, W. Bryden – J. Wyllie, 1886 match g.11) 18-15 10-14 15-10 19-23 10-6 2x9 13x6 23-26 20-16 26-31 16-11 14-18 6-1 18-22 1-6 22-26 11-7 26-30 7-2 30-26 2-7 26-23 7-10 23-18 32-28 31-27 6-2 27-23 28-24 23-27 draw

Vadym Lapin – Nicholas Katamba

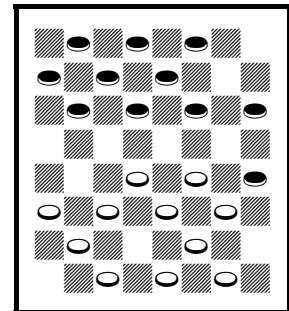
11-15 22-18(A) 15x22 25x18 12-16 24-19 16-20 26-22 8-12 28-24(B) 4-8 29-25 8-11(C) {diagram} 32-28?(D) 11-16 18-15 3-8 22-18 9-14 18x9 5x14 21-17 14x21 25-22 7-11 22-18 10-14 18x9 11x18 23x14 16x32 9-5 20x27 31x24 32-27 24-20 27-23 RW

A – Single Corner.

B – 29-25 draw, in C. Reno's *Flora Temple Intimidator*.

C – Back into published play.

D – See the diagram. 31-26* 10-15! Red strong, PP as in *Duffy's Single Corner* v.56J.



White draws

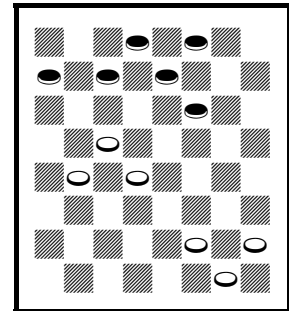
Mark Sokolovsky – Nicholas Katamba

11-15 22-18 15x22 25x18 12-16 24-20?(A) 9-13 20x11 8x22 26x17 13x22 30-25 5-9!(B) 25x18 9-13 29-25 13-17 21x14 10x17 25-22 17x26 31x22 4-8 22-17(C) 8-11 18-14 1-5 23-18 {diagram} 11-15?(D) 18x11 7x16 RW(E)

A – This probably loses. 29-25 draw PP.

B – 22-26 RW, J. Campbell – G. Robertson, 1924 Glasgow Ty.

C – 28-24 RW, W. Gardner – J. Meehan, *Leeds Weekly Draughts Player* vol. 1 p.108.



Red wins

D – See the diagram. 6-9 17-13 7-10 RW.

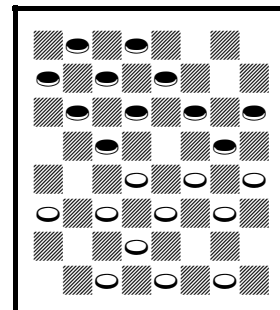
E – Continue 27-23* 6-9 14-10 9-13 17-14 13-17 28-24 16-20 23-18 draw.

Sergio Scarpetta – Elia Cantatore

11-15 22-18 15x22 25x18 8-11 29-25 4-8 25-22 12-16 24-20 8-12 27-24 10-14
24-19 7-10 28-24 3-7 {diagram} 32-28?(A) 9-13 18x9 5x14 22-18 13-17 18x9
6x13 21x14 10x17 31-27 17-22 26x17 13x22 19-15 11x18 20x11 7x16 23x14 1-6
24-20(B) 16-19 27-24 19-23 24-19 6-10 14x7 2x11 RW

A – A published loss. See the diagram. 30-25* draw PP.

B – 27-23 RW, J. Sinclair 1832 g.1 v.3.



White draws

Elia Cantatore – Vadym Lapin

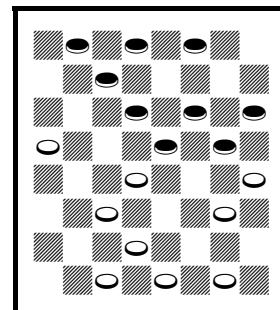
11-15 22-18 15x22 25x18 8-11 29-25 4-8 25-22 12-16 24-20 10-15 21-17 7-10
17-13 8-12 28-24 9-14 18x9 5x14 23-18 14x23 27x18 {diagram} 3-7?(A) 32-28
1-5(B) 26-23 10-14(C) 18x9 5x14 24-19 15x24 28x19 7-10 22-18 6-9 13x6 2x9
30-25 14-17 19-15 10x26 31x6 WW(D)

A – A published loss. See the diagram. 16-19 draw PP.

B – 6-9 13-6 2-9 26-23 10-14 24-19 15-24 28-19 7-10 30-25 1-5 31-26 18-9 5-14
22-18 14-17 25-21 17-22 26-17 13-22 21-17 22-26 18-14 WW.

C – 16-19 23-16 12-19 22-17 WW.

D – Fairgrieve – J. Moir, *Gould's Memorable Matches*.



Red draws

Nicholas Katamba – Vadym Lapin

11-15 22-18 15x22 25x18 8-11 29-25 9-13(A) 25-22 5-9 24-19(B) 4-8 28-24
10-15 19x10 6x15 24-19(C) 15x24 27x20 7-10 23-19 {diagram} 2-6?(D)
21-17?(E) 10-14 17x10 6x24 32-28 24-27* 31x24 3-7?(F) 30-25 1-6 24-19 7-10
26-23 10-14 25-21(G) 6-10 28-24 WW

A – 4-8 draw PP.

B – 24-20 draw, E. Lowder – Bowersock, 1977 GAYP National.

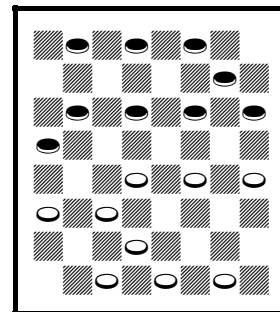
C – 21-17 7-10 draw.

D – See the diagram. 9-14!* 18-9 11-15* 32-28 15-24 28-19 1-5* draw.

E – 32-28 or others WW.

F – 1-6* 30-25 6-10* draw.

G – WW, L. Stubblefield – B. Leatherwood, 1974 National from 11-15 23-19 9-14 27-23.



Red draws

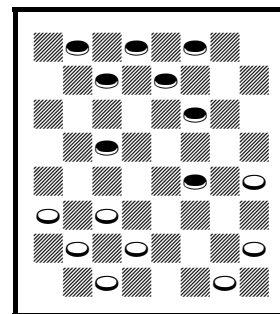
Sergio Scarpetta – Nicholas Katamba

11-15 22-18 15x22 25x18 8-11 26-22 10-15 24-20 15-19 23x16 12x19 29-25 4-8
31-26(A) 9-14 18x9 5x14 27-23 8-12 23x16 12x19 {diagram} 26-23?(B) 19x26
30x23 11-15 23-19 15x24 28x19 7-10 32-27 10-15 19x10 6x15 20-16 2-7 22-17
15-18 17x10 7x14 16-11 1-6 27-24 6-9 24-19 9-13(C) RW

A – 30-26 draw PP.

B – See the diagram. 32-27 7-10 27-23 19-24 draw, KingsRow.

C – Red wins the piece. Good game. This game continued for 88 more moves, which is bad manners when there is no hope. D. Harwood – T. Canning, 2005 World Correspondence Qualifier also reached this position from a Cross.



White draws

Nicholas Katamba – Sergio Scarpetta

11-15 22-18 15x22 25x18 10-14 24-19(A) 8-11 29-25 4-8(B) 28-24 6-10(C)
25-22(D) 9-13 18x9 5x14 22-18(E) 14-17 21x14 10x17 26-22 17x26 31x22 7-10
24-20 2-6* 27-24 6-9 30-25* {diagram} 1-5?(F) 25-21 3-7 32-28 9-14 18x9 5x14
22-18 14-17 21x14 10x17 18-14 17-22 23-18 22-26 19-16 12x19 24x15 26-30(G)
15-10 30-26 10x3 8-12 3-8 WW

A – 24-20 draw PP.

B – 11-16 draw PP.

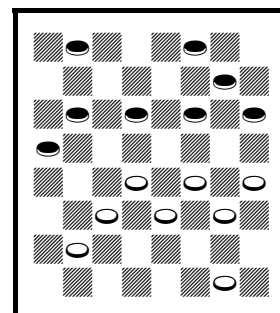
C – 7-10 25-22 11-16 32-28 or 24-20 draw, KingsRow.

D – 26-22 draw, KingsRow.

E – 23-18 draw, KingsRow.

F – See the diagram. 3-7 25-21 10-14* 19-15* 13-17 draw.

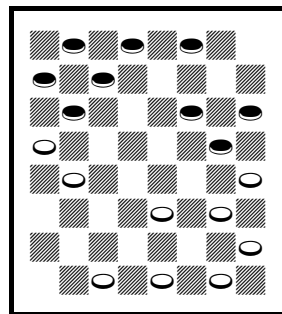
G – 26-31 WW, J. Drummond 1861 p.10C, by a different move-order.



Red draws

Elia Cantatore – Sergio Scarpetta

11-15 22-18 15x22 25x18 8-11 29-25 4-8 24-20 10-15 25-22 12-16 21-17 7-10 17-14 10x17 22x13 15x22
26x17 8-12 27-24! {diagram} 3-7(A) 24-19 7-10* 30-25 10-15* 19x10 6x15 13x6 1x10* 28-24 5-9(B) 17-13
{diagram} 10-14?(C) 13x6 2x9 25-22 9-13 24-19 15x24 32-28 24-27 31x24 14-17 22-18 17-22 24-19 22-26
19-15 26-31 15x8 31-26 20x11 26x19 18-14 12-16 8-3 16-20 11-7 20-24 7-2 24-27 2-7 27-31 14-9 13-17 7-11
31-27 9-6 17-22 6-2 22-26 2-7 19-23 11-16 26-31 3-8 31-26 8-12 23-18 16-20 WW

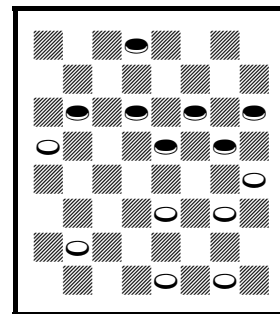


Red moves

A – See the first diagram. This is a published loss that draws. 6-10 draw PP.

B – Corrects J. Drummond 1853 and other books. I prefer 2-7! 32-28 5-9* (16-19? WW, J. Drummond 1853 p.20E) draw, which I don't think I published until now.

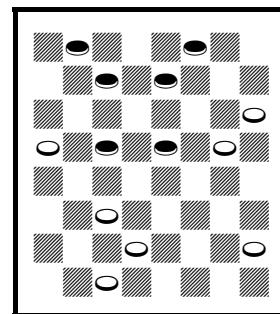
C – See the second diagram. 9-14* 13-9 15-18* 31-27 2-7 draw.



Red draws

Mzikabawo Luntonti – Elia Cantatore

11-15 22-18 15x22 25x18 8-11 29-25 4-8 25-22 11-16 24-20 8-11 27-24 10-15
 21-17(A) 16-19 23x16 12x19 17-13?(B) 9-14 18x9 5x14 20-16 11x27 32x16
 15-19 31-27 6-10 27-23 10-15 16-12 2-6 23x16 {diagram} 15-19?(C) 30-25 6-10
 25-21* 10-15 22-17?(D) 14-18 17-14 18-23 28-24 23x30 24-20 30-26 16-11 7x16
 20x11 26-22 14-10 22-18 11-7 19-23 7-2 15-19 2-7 19-24 13-9 18-15 9-6 24-27
 7-2 15-11 21-17 27-31 17-13 23-26 13-9 26-30 9-5 30-26 RW



Red wins

A – 24-19 draw PP.

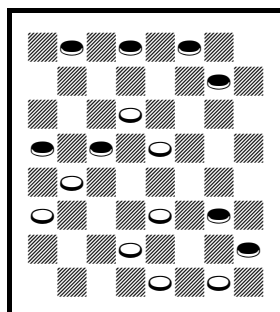
B – A published loss, A. Anderson 1848. 20-16 draw, W. Hay 1838 g.20.

C – See the diagram. 14-17 RW, A. Anderson's 2nd p.102 v.39 and Anderson's 1st g.3.

D – 12-8! 3-12 26-23! (or 28-24! draw) draw.

Alex Moiseyev – Vadym Lapin

11-15 22-18 15x22 25x18 8-11 29-25 10-14 24-19 11-16 28-24 16-20(A) 19-15 4-8 25-22 7-11 22-17 11-16
 17x10 16-19 23x16 12x28 26-22 9-14 18x9 5x14 27-23 20-24 30-26(B) 6-9 22-17 9-13?(C) {diagram}
 23-19?(D) 13x22 26x17 14-18(E) 17-13(F) 2-6* 21-17! 18-23* 17-14?(G) 23-27* 32x23 28-32 19-16 24-27
 31x24 {diagram} 3-7?(H) 10x3 32-27 3x12 27x20x11x18x9 draw(I)



White wins

A – = 11-15 22-18 15-22 25-18 12-16 29-25 10-14 24-19 16-20 28-24 8-12.

B – A good move. 22-18 6-9 (2-7? 21-17! WW, G. Wear – K. Taylor, 1966 I-D) 32-27 28-32 27-20 32-28 20-16? (23-19 may draw) should lose in *Duffy's Single Corner* v.82.

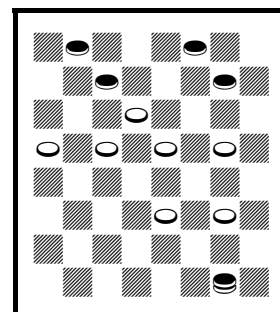
C – 24-27! 31-24 9-13 26-22 2-7 24-20 7-11 draw.

D – See the first diagram. 10-6!! WW, wins a piece.

E – 2-6 draws.

F – 32-27? loses.

G – 19-16 23-27 draw.



Red wins

H – See the second diagram. 32-27 RW.

I – A wild game.

Elia Cantatore – Nicholas Katamba

11-15 22-18 15x22 25x18 8-11 29-25 4-8 24-20 10-15 25-22 12-16 27-24?(A) 16-19(B) 23x16 15-19 24x15
 9-14 18x9 11x25 32-27 6x13(C) 21-17 13x22 26x17 25-29 31-26 5-9 26-22 9-13 27-23 1-5 23-18 8-11 28-24
 2-6 30-25 6-9 25-21 9-14 18x9 5x14 17x10 7x14 16x7 3x10 20-16 29-25 16-11 25x18 11-7 14-17 21x14
 10x17 24-19 18-23 19-16 23-19 16-12 19-16 7-2 16-11 2-6 17-22 6-9 22-26 9-14 26-31 14-18 31-26 18-14
 13-17 14x21 26-22 RW

A – 21-17 draw PP.

B – Or 15-19 24-15 16-19 to same.

C – 5-14 is an easier RW, W. Payne 1756 g.1.

Alex Moiseyev – Mzikabawa Luntonti

11-15 22-18 15x22 25x18 8-11 29-25 10-14 24-19 11-16 28-24 16-20 26-22 4-8 31-26 7-10 32-28 3-7 18-15
9-13(A) 19-16 12x19 23x16 10x19 24x15 7-11 16x7 2x18 22x15 6-10 15x6 1x10 25-22 8-11* 28-24
11-16(B) 27-23* 20x27 23-18 14x23 26x12 27-31(C) 12-8 31-27 8-3 10-15 3-7 15-19 7-10 27-23 21-17 5-9
10-6 19-24 6-1 24-27 1-5 27-31 5x14 31-26 14-9 23-27 draw

A – 14-18 draw PP.

B – 10-15 draw, E. Bruch – K. Albrecht, 1976 National.

C – 10-15 should have drawn, W. K. Campbell – M. Barrie, 1896 Scottish Ty.

Souter

Alex Moiseyev – Elia Cantatore

9-14 22-17 11-15 25-22 8-11 23-19 4-8 29-25 6-9 17-13 2-6(A) 22-17(B) 14-18
{diagram} 26-22?(C) 9-14(D) 24-20 15x24 28x19 5-9 22x15 11x18 27-23 18x27
32x23 7-11 30-26 11-15 19-16 12x19 23x16 15-19 26-23(E) 19x26 31x22 14-18
22x15 10x19 25-22 8-11 16x7 3x10 20-16 19-23 16-11 23-26 11-7 26-31 7-3
31-26 3-8 10-14 17x10 6x15 13x6 26x17 21x14 1x17 RW

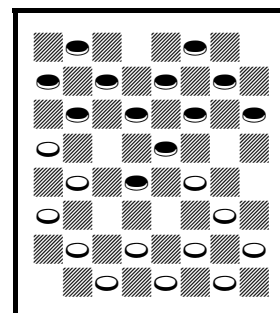
A – Souter.

B – 24-20 draw PP.

C – See the diagram. 26-23 draw PP.

D – 11-16! RW PP.

E – 25-22 Red strong, W. Payne 1756 g.30.



White draws

Mzikabawo Luntonti – Colin Price

11-15 23-19 9-14 22-17 8-11 25-22 6-9 17-13 2-6 22-17 4-8 26-23 14-18 23x14 9x18 27-23* 18x27 32x23
5-9 29-25 9-14(A) 24-20* 15x24 28x19 10-15(B) 19x10 6x15 17x10 7x14 13-9* 3-7 31-27 15-19 23x16
12x19 27-23 19x26 30x23 11-15 25-22 7-11 draw(C)

A – 1-5 30-26* draw PP.

B – 11-15?? loses.

C – Continue 22-17* draw, J. Ash in *Lees' Guide* p.139 v.7.

Ron King – Lubabalo Kondlo

11-15 23-19 9-14 22-17 6-9 17-13 2-6 25-22 8-11 29-25 4-8 24-20 15x24 28x19 11-15 27-24 14-17 21x14
9x18 26-23 18x27 32x23 10-14 19x10 6x15 13-9 14-18 23x14 7-10 14x7 3x10 30-26 5x14 26-23 draw
{continue 1-5 (1-6 draw PP) draw, J. Wyllie – R. Jordan, 1892 match g.13}

Matteo Bernini – Mark Sokolovsky

11-15 23-19 8-11 22-17 9-14 25-22 6-9 17-13 2-6 29-25 4-8 24-20 15x24 28x19 11-15 27-24 14-17 21x14
9x18 26-23 18x27 32x23 10-14 19x10 6x15 13-9 14-18 23x14 7-10 14x7 3x10 30-26 5x14 26-23 8-11 (1-6
draw PP) 25-21 1-5 22-17 15-18 24-19 18x27 31x24 14-18 17-14 10x17 21x14 18-23 14-10 23-27 10-7 draw
(R. Hallett – D. Oldbury, 1991 WCM g.29)

Matteo Bernini – Colin Price

11-15 23-19 8-11 22-17 9-14 25-22 6-9 17-13 2-6 22-17(A) 14-18 {diagram}
17-14?(B) 10x17 21x14 18-22! 19x10 9x18 26x17 7x21 29-25 5-9 24-19 9-14(C)
28-24(D) 4-8 24-20 11-15 19x10 6x15 13-9 8-11 31-26 12-16 32-28 14-17 26-23
18-22 25x18 15x22 27-24 22-26 24-19 1-5 19x12 5x14(E) RW

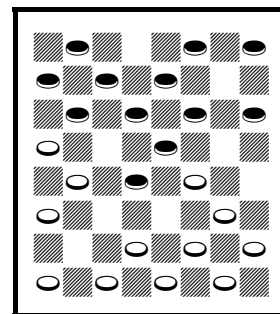
A – 29-25 draw PP.

B – See the diagram. This falls into an old published shot. 26-22 Red better PP.

C – Others win.

D – 31-26 RW, W. Payne 1756 g.28.

E – The game continued for many moves.



White draws

Matteo Bernini – Lubabalo Kondlo

11-15 23-19 8-11 22-17 9-14 25-22 6-9(A) 17-13 2-6 29-25 4-8 22-17 14-18 26-23 18-22 25x18 15x22 23-18
22-25 17-14 10x17 21x14 11-16 30x21 16x23 24-19 8-11 19-15 12-16 15x8 3x12 28-24 7-11 21-17 23-26
31x22 11-15 18x11 9x25 11-7 25-30 7-3 30-26 3-7 16-20(B) 7-11 26-31(C) 11-7 31-26 draw

A – Souter.

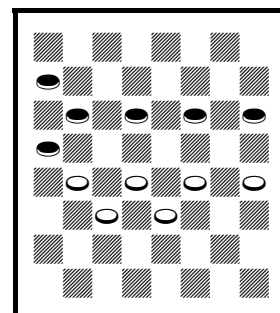
B – 26-22 draw, M. Borghetti – L. Kondlo, 2015 WCM g.11.

C – 26-22 draw, J. Wyllie, *British Draughts Player* p.72.

Tillicoultry

Sergio Scarpetta – Vadym Lapin

11-15 22-18 15x22 25x18 9-13 23-19(A) 10-14 18x9 5x14 29-25 8-11 25-22 6-10
27-23 4-8(B) 22-18(C) 14-17 21x14 10x17 26-22 17x26 31x22 7-10 30-25?(D)
2-6 25-21 11-16 21-17 16-20 18-14 20x27 14x7 3x10 23-18 8-11 32x23 6-9 28-24
1-5 24-20(E) {diagram} 9-14 18x9 5x21 23-18 11-15 18x11 10-14 11-7 21-25 7-2
25-30 20-16(F) 30-25 22-17 14x21 16-11 25-22 11-7 22-18 7-3 13-17 2-6 17-22
3-7 22-26 7-11 26-31 6-10 31-26 10-6 26-23 11-16 18-15 19x10 12x19 10-7 19-24
7-2 24-28 2-7 21-25 6-10 25-30 7-11 30-26 11-7 26-22 7-2 28-32 2-7 32-27 7-11
27-24 11-7 24-19 10-6 19-15 6-2 23-18 2-6 18-14 6-2 15-10 7-3 22-18 RW



Red wins

A – Tillicoultry.

B – 11-15 draw PP.

C – 24-20 draw PP.

D – 24-20 draw PP.

E – See the diagram after 24-20. This position is diagrammed in B. Boland's *Famous Positions*, p.164, with solution by G. Chapman.

F – 2-6 30-25 RW in FP.

Mark Sokolovsky – Sergio Scarpetta

11-15 23-19 8-11 22-18(A) 15x22 25x18 4-8 27-23 11-16 29-25 16-20 31-27
 9-13(B) 25-22 6-9(C) 19-16 12x19 24x6 1x10 23-19 8-11 28-24(D) {diagram}
 9-14(E) 18x9 5x14 22-18* 14x23 27x18 20x27 32x23 2-6 18-14* 10x17 21x14
 13-17 23-18* 6-10* 26-23 17-22 14-9 22-26 19-15 10x19 23x16 11x20 30x23
 20-24 9-6 7-11 6-2 draw

A – Tillicoultry.

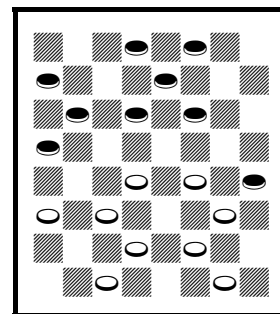
B – 10-14 draw PP.

C – 5-9 draw PP.

D – 27-23 may be easier.

E – See the diagram. The following is strong: 10-15! 19-10 7-23 26-19 2-7

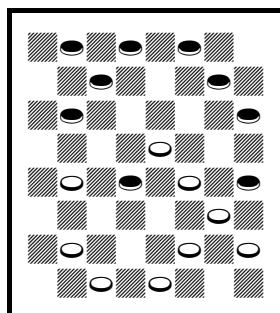
22-18* 9-14 18-9 5-14 30-26! 13-17 19-16* 11-15 16-12* 7-11 26-23 17-22 23-19* 15-18 19-15* 11-16
 15-10* 22-25 10-6 25-29 6-2 29-25 2-6* 25-22 6-9 draw



Red moves

Melikaya Nonyukela – Alex Moiseyev

11-15 23-19 8-11 22-18 15x22 25x18 11-16 27-23?(A) 16-20 32-27 4-8 29-25 10-14 26-22 7-11 18-15
 11x18 22x15 14-18 23x14 9x18 21-17 5-9 {diagram} 17-14?(B) 9-13 15-10(C) 6x15 19x10 2-6 30-26 6x15
 24-19 15x24 28x19 20-24(D) 27x20 18-23 26-22 23-26 25-21 8-11 22-18 26-30 14-10 30-25 31-26 25-30
 26-22 30-25 19-15 11-16 20x11 12-16 11-8 3x12 10-7 16-19 7-2 19-23 2-7 23-27 7-10 27-31 15-11 31-27
 11-7 12-16 10-15 27-24 7-2 16-19 15-11 19-23 11-15 24-27 2-7 27-24 7-11 23-26 11-16 {diagram} 24-27?(E)
 16-19 26-30 19-23* 27-31 23-19 1-6 19-23 6-9 15-10 9-14 10x17 31-26 23-27 26-23 27-24 23x14 17x10
 25x18 draw



White draws

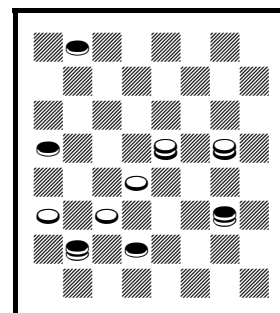
A – 29-25 draw, KingsRow.

B – See the first diagram. 17-13! Red better, *Duffy's Single Corner* v.88.

C – 14-9 RW, R. Yates – R. Davis, *Yates Checker Player*.

D – Or 8-11 RW.

E – See the second diagram. 26-31* 15-11 (16-19 31-27! RW) 31-27 21-17 25-21 (or others, but not 27-23? 18-14! draw) RW.



Red wins

Wagram

Alex Moiseyev – John Webster

11-15 22-17 9-13 24-20(A) 13x22 25x11 8x15 29-25 5-9 25-22 4-8 23-18 8-11
27-24 9-13(B) 32-27 6-9 27-23(C) 10-14(D) 22-17 15x22(E) 17x10 7x14 26x10
2-7* 23-19 7x14 19-16 12x19 24x8 3x12 28-24 14-18* 24-19 18-22 20-16 22-25
16-11 25-29 11-7 29-25 7-2 25-22 2-7 22-18 7-11 9-14 31-27 13-17 19-15 17-22
15-10* 22-25 10-7 25-29 7-3 29-25 27-24 25-22 24-19 22-17 11-16 17-13 16-20
13-9 3-7 9-6 20-24 6-10 7-3 1-5 24-20 5-9 20-16 9-13 16-11 13-17 30-25 10-6 3-7
6-9 7-10* 9-13 {diagram} 10-7?(F) 17-22 RW

A – Wagram.

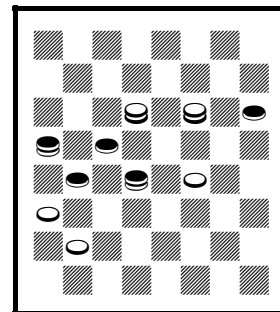
B – 10-14 draw PP.

C – Into the BDP game mentioned below.

D – 1-5 draw PP.

E – 13-22 draw PP, as in the *British Draughts Player* p.18 v.1 from a Single Corner.

F – See the diagram. 10-6 (or 11-7 draw) 18-23* 10-7 23-18 7-2 12-16* 11-20 17-22 draw.



White draws

Waterloo

Mzikabawo Luntonti – Melikaya Nonyukelo

11-15 23-18 8-11 18-14(A) 9x18 24-19 15x24 22x8 4x11 28x19 11-15 27-24 5-9
21-17 9-14 25-21 7-11 29-25 15-18 26-22(B) {diagram} 11-15(C) 32-27 6-9
24-20 15x24 22x6 1x10 17-13 3-7 13x6 2x9 20-16 12x19 27x20 7-11 30-26 10-15
25-22 14-18 22-17 9-13 17-14 18-23 26-22 23-26 14-10 26-30 10-7 30-25 7-3
25x18 3-7 19-24 7x16 24-28 16-11 28-32(D) 20-16 15-19 16-12 19-23 11-16
18-15 16-11 15x8 12x3 32-28 3-7 28-24 7-10 23-27(E) 31-26 24-19 26-22 19-23
10-14 27-31 22-18 31-26 18-15 draw

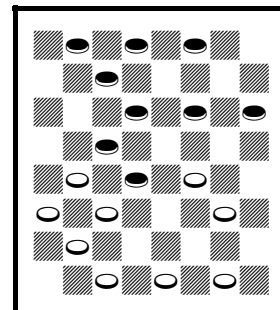
A – Waterloo, considered somewhat weak.

B – Safest. 17-13 Red strong, PP.

C – See the diagram. 3-8 draw, J. Drummond 1853 p.101G.

D – Into the Halliwell – Searight game mentioned below.

E – 24-19 draw, W. Halliwell – J. Searight, 1903 Scotland v. England.



Red moves

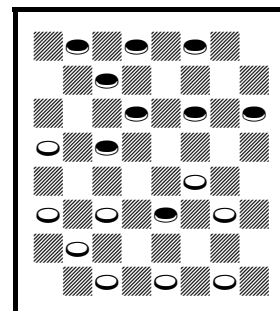
Matteo Bernini – Melikaya Nonyukela

11-15 23-18 8-11 18-14 9x18 24-19 15x24 22x8 4x11 28x19 11-15 27-24 5-9
21-17 9-14 25-21 7-11 29-25 15-18 26-22(A) 18-23(B) 17-13 {diagram} 11-15(C)
22-17* 15-18 31-27 23-26* 30x23 3-8 24-20* 18-22* 25x9 10-14 17x10 6x31
23-18 8-11 21-17 31-26 9-6 1x10 18-14* 11-15 14x7 2x11 17-14 15-18 14-10
26-23 10-7 18-22 7-3 23-18 13-9* 11-15 9-6 22-26 6-2 26-31 2-7 15-19 20-16
draw

A – 17-13 draw PP.

B – 3-8 draw PP.

C – See the diagram. 23-27 32-23 11-15 draw.

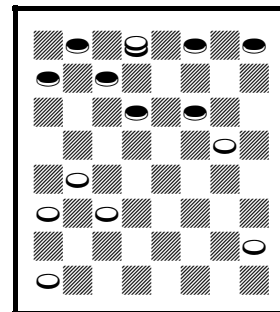


Red draws

Whilter

Colin Price – Ron King

11-15 22-17 9-14 23-19 7-11(A) 25-22 11-16 26-23 16-20 30-26 2-7 23-18 14x30
 19-16 12x19 31-26 30x23 27x2 20x27 32x16 8-11(A) {diagram} 2x9?(C) 11x20
 9-6 10-15 6-10 15-19 10-14 4-8(D) 22-18 20-24 18-15 24-27 14-18 27-32 18-22
 32-27 17-14 27-23 22-18* 5-9 18x27 9x18 21-17 19-23 27-31 8-12 15-10 12-16
 28-24 18-22 17-14 16-20* 14-9* 20x27 31x24 23-26 24-27 26-30 27-23 30-25
 23-26 22x31 29x22 31-26 22-17 26-22 17-13 22-18 9-6 draw



White moves

A – Whilter.

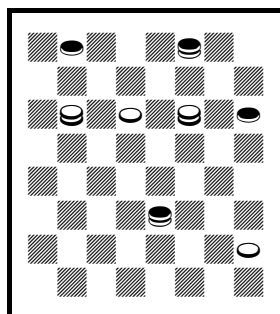
B – This is featured in C. Reno's *Work of the Pentium* p.123 v.6. 6-9 draw PP.

C – See the diagram. 16-7! 6-9 28-24 9-13 24-19 4-8 19-16 8-11 16-12 11-16
 12-8 3-12 7-3 10-15 17-14 15-19 2-7 White strong. I suspect a draw, but White
 will inflict torture.

D – 19-23 draw, R. Bailey – J. Acker, 2009 GAYP National.

Colin Price – LaVerne Wray

11-15 23-19 9-14 22-17 7-11(A) 25-22 11-16 26-23 16-20(B) 30-26 2-7 23-18 14x30 19-16 12x19 31-26
 30x23 27x2 20x27 32x16 8-11(C) 2x9 11x20 9-6 10-15 6-10 15-19 22-18(D) 20-24 10-15 4-8(E) 18-14 8-11*
 15x8 3x12 14-9 5x14 17x10 24-27 29-25 27-31 25-22 31-27 21-17 27-23 17-13 23-26 22-17 26-22 10-7
 22-18 7-2 18-15 17-14 15-11 14-10 11-8 2-7 8-3 7-11 19-23 13-9 23-26 9-6 26-30 6-2 30-26 2-6 26-23 6-9
 {diagram} 23-18?(F) 28-24 18-23 9-14 23-27 24-20 27-24 11-15 3-8 10-7?(G) 8-3 7-2 3-8?(H) {diagram}
 2-7?(I) 24-19 15x24 8-11 7x16 12x28 draw(J)



Red draws

A – Whilter.

B – 5-9 draw PP.

C – Featured in C. Reno's *Work of the Pentium* p.123
 v.6. 6-9 draw PP.

D – 17-14 RW in Reno's book, but that draws.

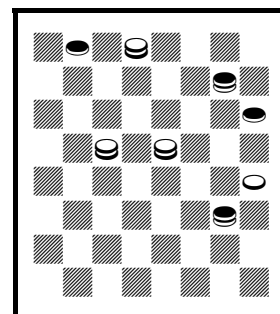
E – 3-7 draw.

F – See the first diagram. 23-19* draw.

G – 14-18 8-3 18-23 24-28 23-19 28-32 20-16 WW.

H – 12-16! 20-11 3-7 11-8 7-11 draw.

I – See the second diagram. 14-18!! 8-3 18-23! 3-8 2-7
 8-3 7-10 3-8 23-19 24-28 19-24 or 20-16 WW.



White wins

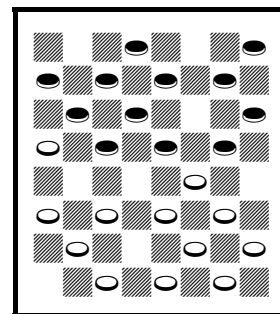
J – Good ending by both players, even with the mistakes.

Lubabalo Kondlo – Mark Sokolovsky

11-15 23-19 9-14 22-17 7-11 25-22 11-16 26-23 5-9 17-13 3-7 29-25 1-5
{diagram} 24-20(A) 15x24 28x19 14-17 21x14 10x26 20x11 8x24 27x20 9-14(B)
31x22 14-17 23-18 17x26 30x23 7-10 25-22 10-14 18x9 5x14 22-18 14-17 18-14
17-22 14-9 22-26 20-16 draw

A – New. 22-17 draw PP, with more than 500 games.

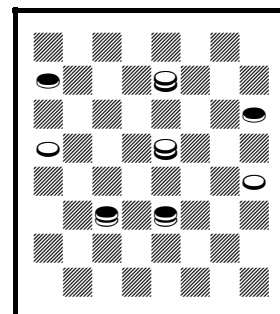
B – Or 4-8 or others.



White moves

Vadym Lapin – Colin Price

11-15 23-19 9-14 22-17 7-11 25-22 11-16 26-23 16-20(A) 30-26 2-7 23-18 14x30
19-16 12x19 31-26 30x23 27x2 20x27 32x16 3-7(B) 2x9 5x14 16-12 8-11 12-8
11-15 8-3 15-19* 29-25 1-5* 17-13 14-17(C) 21x14 10x26 3x10(D) 26-31 10-15
19-23 28-24 23-26 24-20 26-30 25-21 4-8 21-17 31-26 17-14 26-22 14-10(E)
30-26 10-7 8-12 7-2 26-23 2-7 {diagram} 22-17?(F) 7-10 23-18 15x22 17x26 13-9
5x14 10x17 26-23 17-14 23-19 14-10 19-24 10-15 24-28 15-19 28-32 20-16 32-28
16-11 28-32 11-7 32-27 7-3 27-32 3-7 32-27 7-11 27-32 11-16 32-28 16-20 28-32
20-24 32-28 24-27 28-32 19-23 32-28 27-32 28-24 23-18 24-28 18-15 12-16
15-11 16-19 32-27 28-32 27-31 19-24 11-15 WW



Red draws

A – 5-9 draw PP.

B – KingsRow plays this. 6-9 draw PP.

C – 4-8 first may be easier?

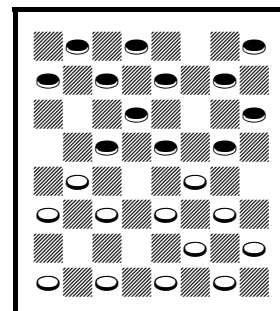
D – Draw, *Robertson's Guide* p.293 v.23.

E – The ending looks difficult for Red.

F – See the diagram. 22-26 (or 23-18 draw) 7-10 27-31* 10-14 23-27* 13-9 27-24* 9-6 31-27 (or 31-26 draw) 6-2 27-23 (not 27-31? 2-7 WW) 24-28 or 23-19 draw.

Vadym Lapin – Alex Moiseyev

11-15 23-19 9-14 22-17 7-11 25-22 11-16 26-23 3-7?(A) {diagram} 22-18 15x22
19-15 10x26 17x3 5-9 30x23 2-7 3x10 6x15 24-19 15x24 28x19 1-6 21-17 9-13
27-24 16-20 23-18 20x27 32x23 8-11 18-14 11-16(B) 19-15 16-19 23x16 12x19
14-9 19-23 9x2 23-26 2-7 26-30 17-14 30-26 14-9 26-23 7-10 13-17 10-14 17-21
15-11 21-25 14-17 23-26 9-6 25-30 6-2 30-25 2-7 25-21 17-14 26-23 7-3 21-25
14-17 23-26 11-7 25-21 17-14 26-23 7-2 23-19 2-7 19-23 7-11 23-19 3-7 19-23
11-16(C) WW



White wins

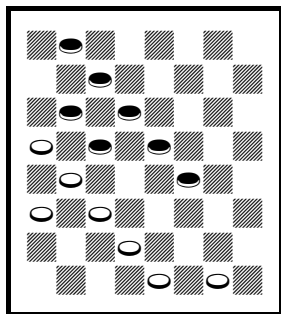
A – A published loss. See the diagram after this move. 5-9 draw PP.

B – 4-8 WW, A. Anderson 1848 g.32B, also in *Lees' Guide*.

C – The game continued.

Elia Cantatore – Mark Sokolovsky

11-15 23-19 9-14 22-17 7-11 25-22 3-7 26-23 5-9 17-13 11-16 29-25 7-11 24-20(A) 15x24 28x19 11-15 20x11 15x24 27x20 8x15 22-17 4-8 30-26 15-19 23x16 12x19 20-16 8-11 16x7 2x11 25-22 11-15 {diagram} 31-27?(B) 14-18 17-14 10x17 21x5 18x25 32-28(C) 6-10(D) 13-9 10-14 27-23 25-30 23x16 30x23 16-11 23-19 11-7 19-16 9-6 1x10 7-2 14-17 5-1 10-14 2-7 15-18 7-10 18-23 1-6 {diagram} 23-26?(E) 6-9 26-30 9x18 17-22 18x25 30x21 draw



White draws

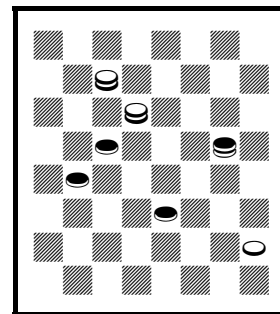
A – 31-26 draw PP.

B – See the first diagram. 32-27* draw.

C – 27-23 RW, W. Campbell – D. McKelvie, *Baker & Reed's Alma* v.85.

D – 25-30 should have won, A. Baker – R. Richardson, *International Draughts Magazine* vol. 1 g.46.

E – See the second diagram. 16-19* RW.



Red wins

Ron King – Mzikabawo Luntonti

11-15 23-19 7-11 26-23 9-14 22-17 3-7 25-22 5-9 17-13 11-16(A) 29-25 1-5 31-26 8-11 22-17 4-8 25-22 16-20 23-18 14x23 27x18 20x27 32x23 15x24 28x19 11-16 17-14 10x17 21x14 16-20 19-15 7-11 23-19 20-24 14-10 24-27(B) 10x1 9-14 18x9 11x25 30x21 5x14 26-22 8-11 1-5(C) 27-32 22-17 14-18(D) 19-15 11-16 13-9 18-23 15-10 draw

A – = Whilter as in *Lees' Guide* trunk.

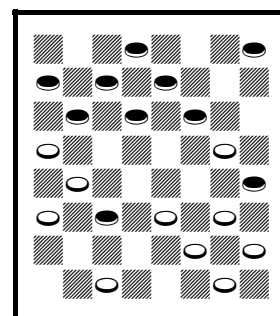
B – 9-14 draw PP.

C – 22-17 draw PP.

D – 11-16 draw, C. H. Freeman – A. Heffner, 1885 match g.1.

Colin Price – Mark Sokolovsky

11-15 23-19 9-14 22-17 7-11(A) 25-22 11-16 26-23 5-9 17-13 3-7 22-17 8-11 31-26 1-5 29-25 16-20 19-16 12x19 23x16 14-18 26-23 18-22 25x18 15x22 {diagram} 17-14?(B) 10x17 21x14 9x18 23x14 6-10 16-12 10x17 12-8 11-16 8-3 7-10 13-9 5x14 24-19 16x23 27x9 17-21 9-5 22-25 5-1 25-29 1-5 29-25 5-9 25-22 9-13 10-15 30-26 22x31 32-27 31x24 28x10 21-25 13-9 25-30 10-6 30-26 6-1 26-23 1-6 23-19 6-10 20-24 10-14 19-15 14-17 24-28 17-13 15-10 9-5 28-32 5-9 32-28 9-5 28-24 5-9 24-19 13-17 10-15 17-13 15-10 13-17 19-16 17-13 16-12 13-17 4-8 9-14 10-15 14-9 8-11 RW



White draws

A – Whilter.

B – See the diagram. This loses a piece. 23-18 draw PP.

Whilter Exchange

Ron King – Colin Price

11-15 23-19 7-11(A) 27-23(B) 11-16 22-18 15x22 25x18(C) 10-14 29-25 3-7(D) 25-22 16-20 31-27 8-11 19-16 12x19 24x8 4x11 23-19 14x23 27x18 7-10 19-16 10-14 16x7 2x11 22-17 14x23 26x19 11-15(E) 19x10 6x15 17-14(F) 9x18 28-24 20x27 32x14 15-19 14-10 5-9 21-17 9-14 17-13 19-23 13-9 23-27 9-6 14-18 6-2 27-31 draw

A – 10-15 23-19 7-10 in recent books.

B – The Whilter Exchange usually continues 22-18. This game goes into a variation of that.

C – A variation of the Whilter Exchange.

D – 8-11 draw, *Lees' Guide* p.171 v.6.

E – 9-14 draw PP.

F – 30-26 draw, R. King – L. Kondlo, 2008 GAYP WCM g.9.

White Dyke

Mark Sokolovsky – John Webster

11-15 22-17 8-11 17-14 9x18 23x14 10x17 21x14 12-16 26-23 16-19 23x16 11x20 24-19 15x24 28x19 6-9 30-26 9x18 26-23 1-6 23x14 6-9 31-26 9x18 27-24 20x27 32x14 draw (M. Tinsley – W. Ryan, 1946 National)

Melikaya Nonyukela – Ron King

11-15 22-17 8-11 17-14 10x17 21x14 9x18 23x14 12-16 26-23 16-19 23x16 11x20 24-19 15x24 28x19 6-9 30-26 9x18 26-23 1-6 23x14 6-9 31-26 9x18 27-24 20x27 32x14 4-8 25-22 8-12 29-25 7-11 19-15 11x18 22x15 12-16 26-22 16-19 22-17 19-23 14-10 23-26 17-13 26-30 25-21 (draw, *Basic Checkers*) 30-25 10-6 2x9 13x6 25-22 draw

John Webster – LaVerne Wray

11-15 22-17 8-11 17-14 9x18 23x14 10x17 21x14 12-16 26-23(A) 16-19 23x16 11x20 24-19 15x24 28x19 4-8(B) 25-22 6-10 30-26 10x17 22x13 8-11 29-25 7-10 26-23(C) 11-15 32-28 15x24 28x19 10-14 25-22(D) 1-6 22-18 14-17 18-14* 20-24 27x20 6-9 13x6 2x27 31x24 17-22 19-15* 22-26 15-10 26-31 24-19 31-26 19-15 26-23 draw

A – 25-22 draw PP.

B – 6-9 draw PP.

C – 19-16 draw, R. Beckwith – G. Lindsay, 2007 GAYP National and several other games.

D – 25-21 draw, S. Scarpetta – M. Borghetti, 2016 GAYP WCM g.10.

LaVerne Wray – John Webster

11-15 22-17 8-11 17-14 9x18 23x14 10x17 21x14 6-9(A) 26-22 9x18 24-19 15x24 22x8 4x11 28x19 7-10 30-26(B) 11-16(C) 26-23 5-9 25-22 9-14 29-25 3-7 22-18 14-17 25-22 17x26 31x22 7-11 27-24 16-20 22-17* 20x27 18-15 draw

A – 3-8 draw PP.

B – 25-22 draw PP.

C – 11-15 draw, J. Webster – R. Hallett, 2007 GAYP National.

Lubabalo Kondlo – Ron King

11-15 22-17 8-11 17-14 10x17 21x14 9x18 23x14 12-16 26-23 16-19 23x16 11x20 24-19 15x24 28x19 4-8 30-26(A) 8-11 25-22 6-10 29-25 10x17 22x13 7-10 19-16 11-15 16-11 10-14 27-23!(B) 1-6(C) 25-21 15-18 32-27 6-9* 13x6 2x9 draw(D)

A – 25-22 draw PP.

B – 25-21? RW, two games that Kondlo won.

C – 15-18 draw, L. Kondlo – J. Francis, 2011 World Qualifier.

D – Continue 11-7* draw.

Alex Moiseyev – Ron King

11-15 22-17 8-11 17-14 9x18 23x14 10x17 21x14 12-16 26-23 16-19 23x16 11x20 24-19 15x24 28x19 6-9 30-26 9x18 26-23 18-22(A) 25x18 7-10 29-25 5-9 25-21 9-13 18-15(B) 1-6(C) 15-11 {diagram} 3-7?(D) 31-26 7x16 19x12 10-15 26-22 6-10 21-17 2-7 27-24(E) 20x27 23-18 27-31 18x2 10-15 2-7 31-26 32-27 26-30 WW

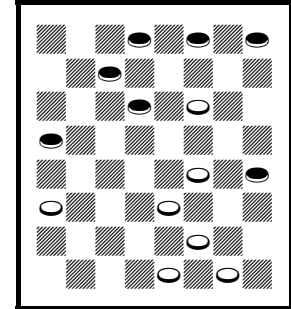
A – 1-6 draw PP.

B – 31-26 draw, L. Kondlo, three times in 2007.

C – 4-8 or others draw.

D – See the diagram. 3-8* 11-7* 2-11 19-16* draw.

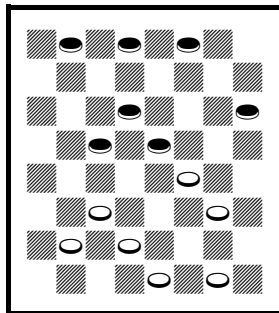
E – 32-28 also wins.



Red draws

Nicholas Katamba – John Webster

11-15 22-17 8-11 17-14(A) 9x18 23x14 10x17 21x14 6-9 26-22 9x18 24-19 15x24 22x8 4x11 28x19 7-10 25-22 11-15 27-24(B) 5-9! 29-25?(C) 9-14 30-26(D) {diagram} 2-6?(E) 26-23 12-16 19x12 15-18 22x15 10x28 25-21 6-10 31-26 10-15 26-22 1-6 22-17 6-10 17-13 15-18 23-19 18-22 13-9 22-26 9-6 26-30 6-2 30-26* 19-16 10-15 2-6 15-18 6-10 {diagram} 18-22?(F) 10x17 26-31 17x26 31x22 16-11 22-18 11-8 18-14 8-4 14-9 4-8 9-13 8-11 13-9 21-17 9-6 17-14 6-1 14-10 1-5 10-6 5-1 6-2 1-5 2-6 5-1 11-7 3x10 6x15 WW



Red wins

A – White Dyke.

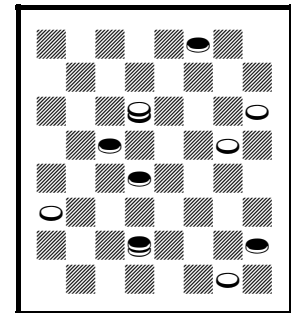
B – 32-28 draw PP.

C – 22-17* 9-14 or 3-8 or others draw, with a variety of further play, and seems to correct *Basic Checkers*.

D – 25-21 RW in *Basic Checkers*.

E – See the first diagram. 3-8 32-27 8-11 or others RW. 1-6? should draw, J. Morrison – G. Lindsay, 1999 GAYP National.

F – See the second diagram. 18-23! 10-17 23-27 32-23 26-19 17-14 19-15 21-17 28-32 14-9 (17-13 15-11 draw) 32-27 draw.



Red draws

Will o' the Wisp

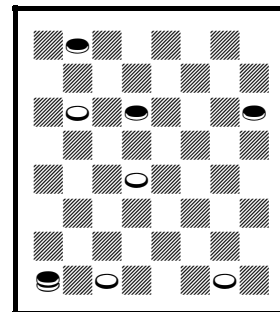
Melikaya Nonyukela – Lubabalo Kondlo

11-15 23-19 9-13(A) 22-18 15x22 25x18 7-11 19-15 10x19 24x15 5-9 29-25
12-16 26-22 16-19 21-17 9-14 17x10 13-17 22x13 19-24 28x19 8-12 15x8 6x29
27-23 4x11 23-18 2-6 31-27 11-16 18-14 16x23 27x18 6-10* 14x7 3x10 13-9
{diagram} 10-14?(B) 18-15 14-17 15-10 17-21 10-7(C) 29-25 7-3 25-22 3-7 12-16
7-10 22-18 9-6 18-23 6-2 16-20 2-6 20-24 6-9 24-27 9-14 27-31 10-15 1-5 14-17*
31-26 32-27 23x32 30x23 21-25 15-18 25-30 17-22 32-27 23-19 WW

A – Will o' the Wisp.

B – See the diagram. 12-16* 9-5 (9-6 draw in *Lees' Guide* p.183 v.5) 16-19*
18-15 19-24 or 10-14 draw.

C – Or 9-6 WW, *Boland's Masterpieces*, p.12#3 and *Lees' Guide*.



Red draws

Unusual

Lubabalo Kondlo – Sergio Scarpetta

11-15 21-17 8-11(A) 17-13 9-14 22-18(B) 15x22 25x9 5x14 29-25 11-15 25-22
7-11(C) 24-20 4-8 23-18 14x23 27x18 12-16 32-27(D) {diagram} 1-5(E) 27-24
16-19* 31-27 8-12 20-16 11x20 18x11 10-15 30-25 6-10 22-17! 3-7* 11-8 7-11*
26-22 5-9 13x6 2x9 8-3 9-14* 25-21 12-16 17-13 14-18 22-17 19-23 3-7 23x32
7x23 20x27 13-9 27-31 9-6 15-19 23-18 19-23 18x27 32x23 17-13 23-18 21-17
31-26 6-2 draw

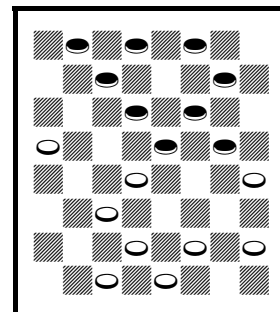
A – A 3-move opening. 9-13! Switcher.

B – 25-21 draw PP.

C – 14-18 may be more popular.

D – 28-24 draw, E. Scheidt – K. Hanson, 1964 National.

E – See the diagram. 8-12 should draw CR, P. Ketchum – Scott, *Wood's Checker Studies* 1 #85 v.4.



Red moves

Nicholas Katamba – Mark Sokolovsky

11-15 23-19 8-11 22-17 10-14?(A) 17x10 7x14 19x10 6x15 25-22 4-8(B)
22-18(C) 15x22 26x10 2-7 10-6 1x10 29-25(D) 11-15?(E) 25-22 {diagram}
10-14(F) 21-17 14x21 30-25 21x30 31-26 30x23 27x2 9-13 2-6 8-11 6-10 5-9
24-20 12-16 28-24 3-8 22-18 13-17 10-14 17-22 14x5 22-26 WW

A – Weak. I don't know what to call this opening, maybe "unusual."

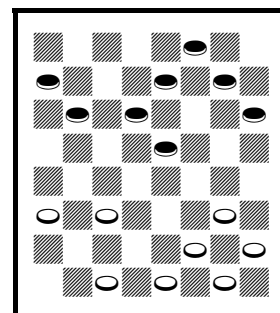
B – 14-18? WW, T. Lea – W. Lea, *Gould's Memorable Matches*.

C – 29-25 White strong, KingsRow.

D – 24-19 White strong, KingsRow, then maybe 28-24 draw?

E – The loser. 12-16 27-23 16-20 or 9-14 draw.

F – See the diagram. Falls into a shot, but others lose. 8-11 27-23 9-13 31-26
10-14 23-19 14-18 WW, but offers hope.



Red moves

Women's World Championships

Kim Willis – Wynnell Neverson

9-14 22-18 5-9(A) 24-19 11-15 18x11 8x24 28x19 9-13(B) 25-22 14-17?!(C) 21x14 10x17 29-25 4-8 25-21 6-10 21x14 10x17 23-18 8-11(D) 19-15(E) 11-16(F) 15-11 16-19 11-8 12-16 {diagram} 8-4?!(G) 16-20 18-15 1-5 27-23 19-24 23-18?(H) 5-9 26-23(I) 17x26 31x22 24-28 30-25 20-24 25-21 24-27 21-17 27-31 23-19 31-26 RW(J)

A – Double Corner.

B – 4-8 draw PP.

C – Causes problems. 4-8 draw PP.

D – 7-10 may draw.

E – 18-14 may win.

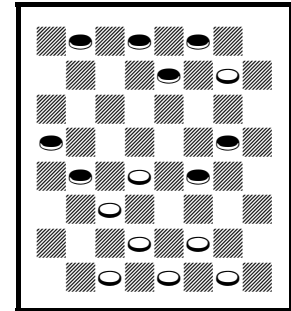
F – 3-8 may draw.

G – See the diagram. 18-15 3-12 15-11 WW, a lot simpler.

H – 23-19 5-9 19-16 White may be strong.

I – 15-11 7-16 18-15 2-6 15-11 16-19 11-7 3-10 4-8 offers chances for White.

J – Time forfeit.



White wins

Wynnell Neverson – Kim Willis

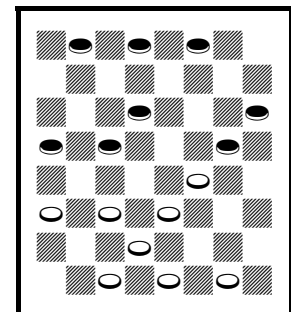
9-14 23-19 11-15 27-23(A) 6-9(B) 22-18 15x22 25x18 8-11 19-15 10x19 24x8 4x11 28-24 11-16(C) 24-19 9-13 18x9 5x14 29-25 7-10 25-22 {diagram} 3-7?(D) 19-15 10x19 22-17 13x22 26x3 19x26 31x22 16-19 30-26 1-6 3-8 19-24 8-11 6-10 21-17 WW

A – Defiance.

B – = 10-14 24-19 6-10 27-24 11-15.

C – 7-10 draw PP, as in *Kear's Encyclopedia* p.311 v.31.

D – Falls into a shot. See the diagram before this move. 2-7 or 1-5 draw.



Red draws

Nadiya Chyzhevskaya – Tetiana Zaitseva

11-15 22-17 8-11 25-22 9-13(A) 17-14 10x17 21x14 4-8 24-19(B) 15x24 28x19 6-9?(C) 29-25 9x18 23x14 11-16 27-23 2-6(D) 22-18 6-9 25-22 16-20 {diagram} 32-27?(E) 8-11* 30-25 1-6 25-21 6-10* 27-24 20x27 31x24 10x17 21x14 7-10 14x7 3x10 24-20 10-14* 19-15 12-16 15x8 16-19 23x16 14x30 22-18 draw

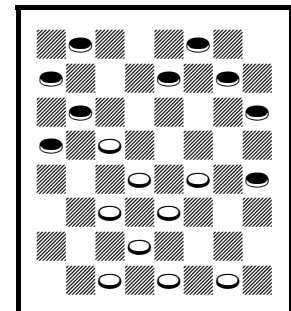
A – Switcher.

B – 29-25 draw PP.

C – 6-10 draw transposes back into *Lees' Guide* p.147 v.14.

D – 8-11 WW, *Master Play* p.56 v.7E from 9-13 23-18 12-16.

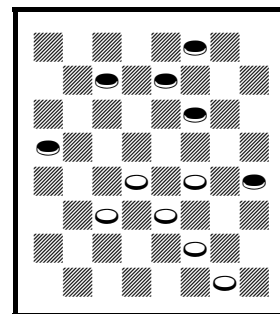
E – 32-28 1-6 22-17 13-22 26-17 8-11 17-13 11-16 31-27 WW?



White wins?

Tetiana Zaitseva – Nadiya Chyzhevskya

11-15 23-19 9-13(A) 22-18 15x22 25x18 8-11(B) 19-15 10x19 24x8 4x11 29-25
 12-16(C) 28-24 16-20(D) 25-22 6-9 24-19 7-10* 26-23 2-7* 30-26 9-14* 18x9
 5x14 22-18 14-17 21x14 10x17 26-22 17x26 31x22 1-6* {diagram} 19-16?(E)
 6-10* 23-19 10-15* 19x10 7x23 27x18 20-24* 16x7 3x10 32-28 24-27 28-24
 27-31 24-19 31-27* 18-15 10-14 15-10 14-17 22-18 27-23 18-14 23x16 10-6
 17-21 6-2 21-25 14-10 25-30 10-6 13-17 6-1 17-22 1-6 22-26 6-10 26-31 2-6
 16-19 6-2 31-26 2-6 26-23 6-9 30-26 10-14 19-15 9-6 26-22 14-9 23-18 6-2 15-10
 9-5 22-17 5-1 18-14 2-6 10-15 6-2 17-13 1-5 15-10 5-1 14-9 RW



White draws

A – Will o’ the Wisp.

B – 10-14 draw PP.

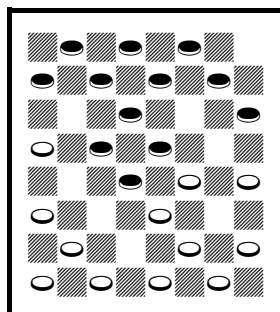
C – 6-10 draw PP.

D – 7-10 White better, KingsRow.

E – See the diagram. 18-14 (or 32-28 draw) 6-10* 14-9 11-15 19-16 draw.

Kim Willis – Tetiana Zaitseva

11-15 22-17 8-11 17-13 4-8 23-19(A) 15-18 24-20 9-14(B) 26-23 11-15 {diagram} 30-26?(C) 15x24 28x19
 8-11! 19-15(D) 10x19 23x16 12x19 27-23 18x27 31x8 3x12 25-22 7-11 22-17 14-18 26-23 18x27 32x23
 11-15 29-25 {diagram} 2-7?(E) 25-22?(F) 5-9?(G) 23-18 15-19 18-15 19-23 15-11 7x16 20x11 23-26 draw



White draws

A – Old 14th.

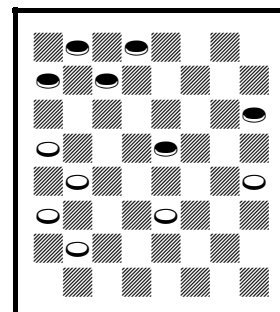
B – 11-15 28-24 draw PP.

C – See the first diagram. 28-24 draw PP.

D – 19-16 RW, R. Yates – Blenn, *Yates Checker Player*.

E – See the second diagram. 15-18 or 15-19 RW, maybe 15-19 23-16 12-19 20-16 19-24 16-11 24-27 11-8 27-32 8-4 32-27 4-8 27-23 25-22 23-19 or 23-26 RW.

F – 17-14* 15-18 23-19 18-23 21-17 23-27 20-16 27-32 25-21 draw.

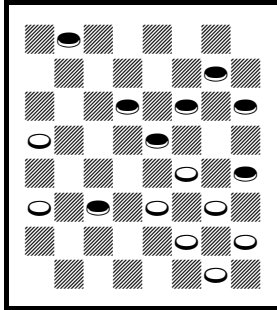


Red wins

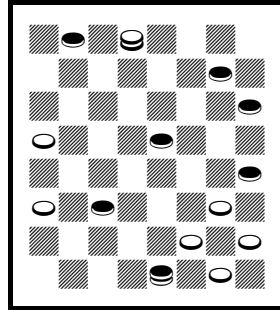
G – 7-11! 23-18 15-19 RW.

Tetiana Zaitseva – Kim Willis

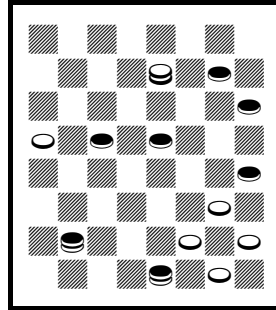
11-15 23-19 7-11 22-17 11-16 26-23 16-20(A) 17-14(B) 9x18 23x7 3x10 25-22 5-9 29-25 9-14(C) 22-17 8-11
 25-22 6-9 17-13* 14-18 13x6 18x25 21-17 2x9 30x21 9-14 31-26 4-8* 17-13 14-18* 26-23 18-22 {diagram}
 23-18(D) 22-26 18-14 10x17 19x10 17-22 10-7(E) 26-31 7-2 11-15 {diagram} 21-17(F) 22-25 17-14 25-29
 14-10 29-25 10-6(G) 1x10 2-7* 10-14 {diagram} 7-10?(H) 15-18(I) 10x17 {diagram} 25-21?(J) 17-14 18-22
 13-9 22-25 9-6 25-30 6-2 8-11 2-6(K) 30-25 14-10 25-22 6-9(L) 22-17 10-6(M) 11-15 {diagram} RW(N)



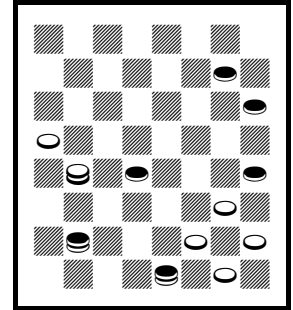
1. White moves



2. White draws



3. White draws



4. Red wins

A – Not an Alma or Whilter. 8-11 draw PP.

B – 30-26 draw, R. Frazer – A. McMillan, *Draughts Player's Weekly Magazine*.

C – 9-13 should draw, C. Olsen – G. I. Miller, 2001 National.

D – See the first diagram. 13-9 22-25* 9-6 looks strong.

E – 24-19 draws.

F – See the second diagram. 27-23 20-27 23-19 15-24 28-19 1-5 32-23 31-27 23-18 27-23 19-15 23-14 15-10 draw.

G – Or 2-7 draw.

H – See the third diagram. 7-11 15-18 11-4 18-22 4-8 22-26 8-11 26-30 11-15 30-26 13-9 25-22 15-19 14-17 27-23 20-27 19-24 draw.

I – Or 15-19 24-15 31-24 28-19 25-21 RW.

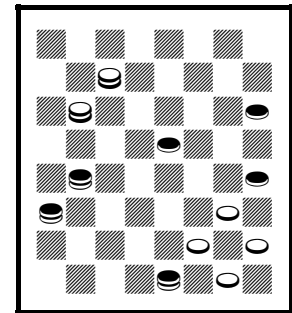
J – See the fourth diagram. 18-22 17-26 31-22 24-19 22-17 19-15 17-14 RW.

K – 2-7 11-16 draw.

L – 10-7 draw.

M – 9-14 17-22 10-6 draw.

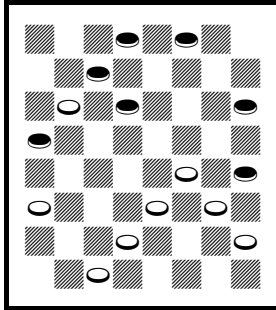
N – See the fifth diagram. This position looks like a classic draw. Continue 6-10 15-18 10-7! 17-14 9-6* 18-22 7-11* 14-18 6-10* 21-17 10-15* 17-14 (31-26 15-10* draw) 15-19* 22-25 (31-26 11-15 18-11 19-23 draw) 19-16 draw.



5. White draws

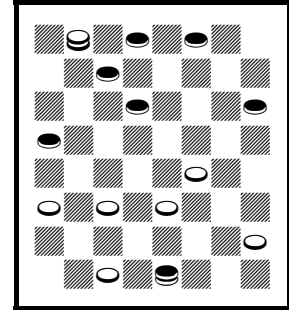
Wynnell Neverson – Nadiya Chyzhevskya

9-14 22-18 5-9(A) 24-19 11-15 18x11 8x24 28x19 4-8 25-22 8-11 22-18 11-16 29-25 7-11 25-22 1-5 32-28(B) 16-20 27-24 20x27 31x24 9-13 18x9 5x14 22-18(C) 11-16 18x9 16-20(D) {diagram} 9-5?(E) 20x27 26-22(F) 27-31 5-1 {diagram} 2-7?(G) 23-18?(H) 31-27 18-15(I) 3-8?(J) {diagram} 22-18?(K) 27-23?(L) 18-14* 23x16 14-9 10x19 1x3 19-24 draw



White draws

A – Double Corner.
 B – 27-24 16-20 32-28 = same.
 C – 24-20 draw PP.
 D – Draw, *Scientific Checkers*, B3 v.2c.
 E – See the first diagram. 26-22* (19-16 RW, E. Churchill – J. Lalor, *Wood's Checker Player* g.337 v.2)
 20-27 28-24* 27-32 24-20* 32-28 9-5 6-9 5-1 28-32
 23-18 32-27 30-25 10-14 18-15 draw.
 F – 5-1 RW, T. Reno – J. Seay, 1978 National from 10-14 24-19 6-10.



Red wins

22-15 10-14 1-17 13-29 15-10 29-25 21-17 25-22 17-13 2-7! RW.

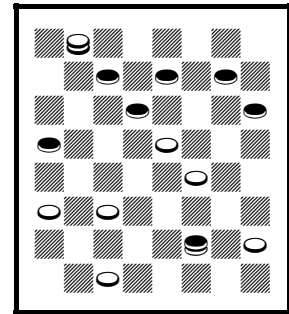
H – 22-18* draw.

I – 21-17 6-9 RW.

J – 12-16 RW.

K – See the third diagram. 1-5 7-11 30-25* 11-18 22-15 10-14 (27-23? 28-24! WW) 19-16* (5-9? 6-10! RW) draw.

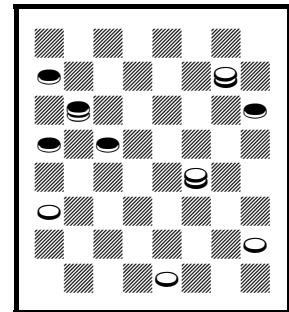
L – 7-11 and 27-23 RW.



White draws

Nadiya Chyzhevska – Wynnell Neverson

11-15 24-19(A) 15x24 28x19 8-11 22-18 9-14 18x9 5x14 26-22(B) 11-15 22-18
 15x24 18x9 6x13 27x20 4-8 23-18 8-11 18-14 10x17 21x14 12-16 30-26(C) 16-19
 25-22 3-8 29-25 8-12 25-21 19-23 26x19 11-16 20x11 7x23 14-10(D) 23-26 22-18
 26-30 18-15 30-25 15-11 25-22(E) 10-7 22-18 7-3 18-15 11-8 15-10 8-4 10-6 3-8
 2-7 32-28 7-10 8-11 10-14 11-15 1-5 15-19 6-9 4-8 {diagram} 14-17*(F) 21x14
 9x18 19-23 18x27 31x24 13-17 8-11 17-22 11-15 22-26 15-18 26-31 18-23 5-9
 draw



Red draws

A – Second Double Corner.

B – 25-22 draw PP.

C – 25-22 draw PP.

D – 22-18 draw, *Shearer's Handbook*, p.195 v.44.

E – 12-16 draw, B. Brown – J. Ferrie, 1899 England v. Scotland.

F – See the diagram. 14-18? 19-15 18-22 15-18 22-25 18-22 WW.

Kim Willis – Nadiya Chyzhevskaya

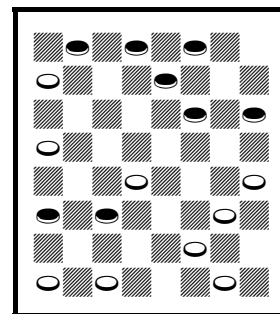
11-15 23-19 8-11 22-17 4-8(A) 17-13 15-18 24-20 9-14 26-23 11-15 28-24 8-11
31-26 5-9?(B) 21-17 14x21 23x5 15-18 26-23 18-22 25x18 10-15 19x10 6x22
23-18 {diagram} 12-16?(C) 18-14 3-8(D) 14-10 7x14 24-19 16x23 27x9 11-15
9-6 2x9 13x6 1x10 5-1 10-14 1-6 14-18 6-10 15-19 10-15 19-24 15-19 24-28
20-16 8-12 19-24 12x19 24x15 WW

A – Old 14th.

B – Weak. 6-9 draw PP.

C – See the diagram. 7-10 draw PP, as in *Kear's Encyclopedia*.

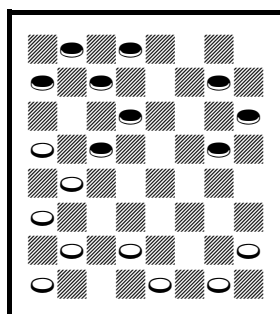
D – 11-15 may also lose?



Red draws

Nadiya Chyzhevskaya – Kim Willis

11-15 23-19 8-11 22-17 11-16 17-13?!(A) 16x23 27x11 7x16 24-20(B) 3-7(C) 20x11 7x16 25-22 9-14(D)
22-17 4-8 30-25?(E) {diagram} 5-9?(F) 28-24 16-20 24-19 8-11 {diagram} 25-22(G) 11-15 32-28 15x24
28x19 20-24 26-23 24-28 31-26 28-32 19-16 12x19 23x16 32-27 16-12 14-18 22x15 10x19 12-8 19-23 26x19
9-14 17x10 6x24 8-3 27-23 21-17 23-18 3-8 24-27 8-11 27-32 29-25 32-27 13-9 27-23 25-21 23-19 17-13
19-15 11-8 18-14 9-5 14-10 21-17 10-6 8-3 15-19 3-8 19-16 8-3 16-12 RW



Red wins

A – Weak. 24-20 draw PP.

B – KingsRow recommends 25-22 draw.

C – Transposes into a more normal Glasgow. 16-19!
Red strong.

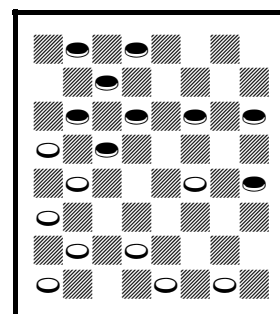
D – = 11-15 23-19 8-11 22-17 9-14 25-22 11-16 24-20
16-23 27-11 7-16 20-11 3-7 17-13 7-16.

E – 28-24 draw, R. Martins – J. Wyllie, 1863 WCM,
three times.

F – See the first diagram. 16-19 32-27 8-11 or 12-16
RW.

G – See the second diagram. 32-28* 11-15 28-24* 2-7

26-23* 15-18 24-20* 18-27 19-15 draw.



White draws

Tetiana Zaitseva – Wynnell Neverson

11-15 24-19 15x24 28x19 8-11 22-18 10-14(A) 25-22 11-16 29-25?(B) 16-20!(C)
18-15(D) 4-8 22-18 {diagram} 9-13?(E) 18x9 5x14 26-22 7-10 22-18 1-5 18x9
5x14 23-18! 14x23 27x18 3-7 30-26 20-24 25-22 7-11 22-17 13x22 26x17 2-7
32-28 24-27 31x24 11-16 18-14 16x23 17-13 10x17 21x14 23-27 14-9 7-11 9x2
11x18 24-19 draw

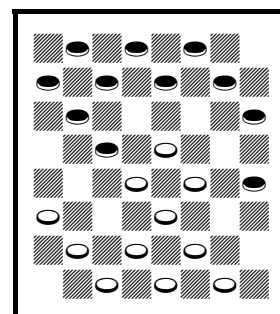
A – 11-16 25-22 16-20 22-17 draw, but not 29-25? 10-14 which is the same trap.

B – Going into Wyllie's Invincible, a famous loss. 27-24 or 22-17 draw PP.

C – Several players and authors have missed the win, here or later.

D – 19-16 loses, E. Gilbert.

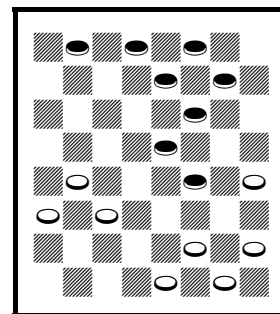
E – See the diagram. 7-11 is the famous RW by A. Anderson.



Red wins

Wynnell Neverson – Tetiana Zaitseva

9-14 22-18 5-9 25-22 11-16 22-17(A) 9-13 18x9 13x22 26x17 6x22 30-26 10-15
26x17 16-19 23x16 12x19 29-25 8-11 25-22 4-8 24-20?(B) {diagram} 15-18?(C)
22x15 11x18 27-23* 19x26 31x15 7-11 15-10* 2-6 32-27 6x15 27-23 1-6 28-24
8-12 23-19 6-10 17-13 15-18 13-9 18-23 9-6 23-27 6-1 27-31 21-17 31-26 17-13
3-8 13-9 10-14 9-6 26-23 19-15 11x18 24-19 23x16 20x4 18-23 4-8 14-17 8-11
23-27 6-2 17-22 1-6 22-26 6-10 26-31 10-15 27-32 2-6 32-28 15-19 31-27 6-10
27-24 10-15 24-20 15-18 20-24 11-15 24-20 18-23 28-32 15-18 20-16 19-24
16-20 24-28 12-16 draw



Red wins

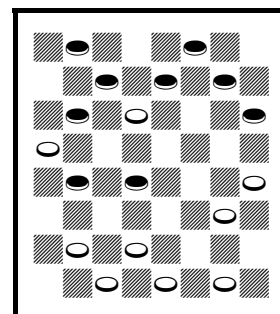
A – 18-15 draw PP.

B – 17-14 15-18! 22-15 11-18 24-15 18-22 draw.

C – See the diagram. 7-10 17-13 2-6 RW, as Red kings.

Wynnell Neverson – Kim Willis

9-14 23-19 11-15 22-17 6-9(A) 17-13 2-6 24-20 15x24 28x19 8-11 25-22 11-15
27-24 4-8 29-25 14-17 21x14 9x18 22-17?(B) 5-9 17-14 10x17 19x10 {diagram}
6x15?(C) 13x6 1x10 24-19 15x24 26-22 17x26 31x6 7-10 6-2 8-11 25-22 10-15
2-6 15-19 30-26 24-28 6-10 19-24 22-17 24-27 32x23 28-32 23-18 32-27 17-13
27-31 26-22 31-27 22-17 27-23 17-14 23-27 14-9 27-23 10-14 23-19 14-10 19-23
18-14 23-19 9-5 11-15 5-1 15-18 14-9 18-22 1-5 19-24 9-6 22-26 6-2 WW



Red wins

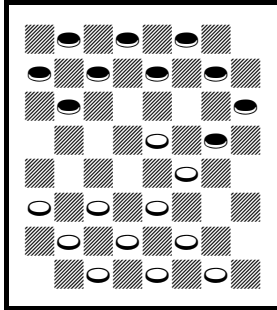
A – Souter.

B – A published loss. 26-23 draw PP.

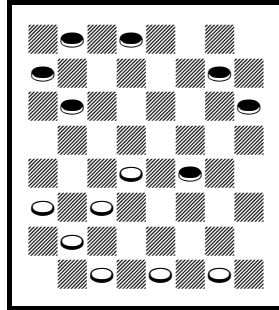
C – See the diagram. 7-14 26-22 17-26 31-15 3-7 RW, J. Sturges 1800 g.31 v.28.

Kim Willis – Wynnell Neverson

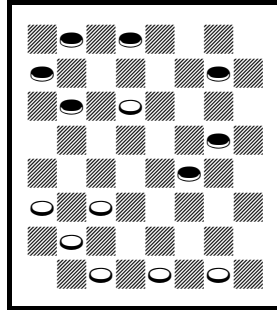
11-15 24-19 15x24 28x19 8-11 22-18 11-16 25-22 10-14 29-25 4-8 18-15?(A) {diagram} 14-18?(B) 23x14
9x18 26-23 6-9 23x14 16x23?(C) 27x18 7-10 14x7 3x19 {diagram} 18-15?(D) 12-16?(E) 15-10?(F) 8-12?(G)
{diagram} 22-18?(H) 9-14* 18x9 5x14 25-22 {diagram} 1-5?(I) 22-17 14-18 17-13 18-22 10-6 2x9 13x6
22-25 21-17 25-29 17-14 19-24 6-2 16-19 2-7 19-23 7-11 23-27 32x23 24-28 23-18 28-32 18-15 32-28 15-10
28-24 11-15 12-16 10-7 24-28 15-10 16-19 10-15 19-23 15-19 WW



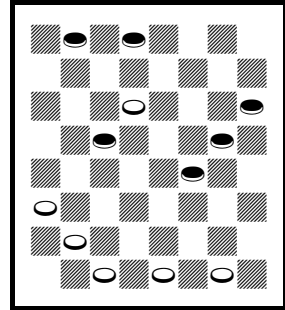
1. Red wins



2. White wins



3. White wins



4. Red draws

A – 27-24 draw PP.

B – See the first diagram. 16-20 22-18 7-11 RW, *British Draughts Player*.

C – 9-18 15-11 draw.

D – See the second diagram. 21-17 12-16 18-14 WW.

E – 9-14* 22-17 14-18* 17-14 1-6 or 12-16 draw.

F – 21-17 9-13 17-14 1-6 14-10 6-9 10-6 WW?

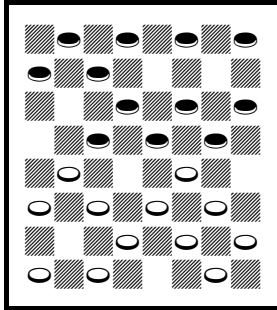
G – 9-14* 22-17 14-18* draw.

H – See the third diagram. 22-17 16-20 17-13 9-14 25-22 19-24 31-26 24-28 22-18 WW.

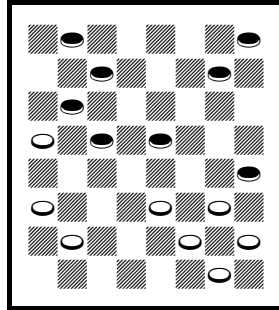
I – See the fourth diagram. 19-24 30-26 16-20 22-17 14-18* 17-13* 12-16* 13-9 24-28 31-27 1-5 10-6 draw.

Tetiana Zaitseva – Nadiya Chyzhevska

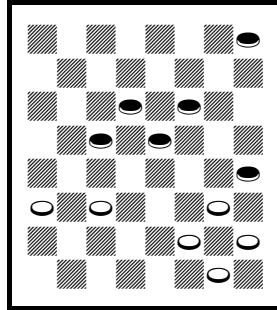
11-15 23-19 7-11 22-17 11-16 27-23(A) 8-11 25-22(B) 9-14(C) 31-27?(D) {diagram} 5-9(E) 17-13 3-8?(F) 29-25 16-20 19-16 12x19 23x7 2x11 26-23 15-18 22x15 10x26 30x23 11-15 {diagram} 23-19?(G) 8-11 19x10 6x15 13x6 1x10 25-22 {diagram} 14-18?(H) 24-19 18x25?(I) 19-16 25-30 16x7 10-14 7-2 15-18 2-7 18-22 7-10 30-26 10x17 26-31 17x26 31x22 27-23 4-8 23-19 8-12 19-15 12-16 15-10 16-19 10-6 19-23 6-1 22-26 21-17 26-22 17-14 23-26 14-9 26-30 28-24 20x27 32x23 30-26 23-19 26-23 19-16 23-19 16-11 19-15 11-7 15-10 7-3* 10-14 9-6 14-10 6-2(J) {diagram} 10-15 2-7 15-19 1-6 22-18 7-11 18-23 6-10 19-24 10-15 23-27 11-16 24-28 16-20 28-32 3-8 32-28 8-11 28-32 11-16 32-28 16-19 28-32 19-24 27-31 24-28 31-27 15-19 27-31 20-24 32-27 28-32 27x20 19-24 WW(K)



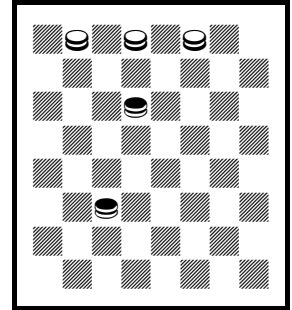
1. Red wins



2. White draws



3. Red wins



4. White wins

A – 26-23 draw PP.

B – 17-13 draw, KingsRow.

C – Into a Whilter. 16-20 Red better, KingsRow.

D – 29-25 draw, KingsRow.

E – See the first diagram. 6-9! 17-13 3-8! RW.

F – 2-7 RW, KingsRow.

G – See the second diagram. This is a published loss. 25-22* draw PP.

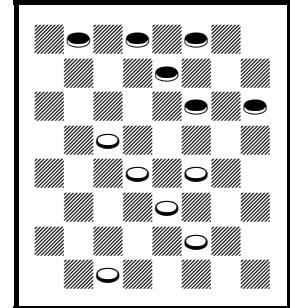
H – See the third diagram. 4-8!* RW, A. Heffner, *Lees' Guide* Supplement p.267 v.5. 11-16? draw, J. Drummond 1853 p.25C.

I – 15-31 draw, J. Sprague – A. White, 1952 National.

J – See the fourth diagram after this move. You've seen this before, but White will do it with perfect efficiency.

Nadiya Chyzhevskaya – Tetiana Zaitseva

11-15 22-18(A) 15x22 25x18 12-16 29-25 10-14 25-22 16-20 24-19 6-10
 22-17(B) 9-13 18x9 5x14(C) 28-24(D) 13x22 26x17 8-11 23-18 14x23 27x18
 20x27 32x23* 4-8 31-27 8-12 17-14?(E) 10x17 21x14 {diagram} 2-6?(F) 19-15*
 12-16 15x8 3x12 30-26 6-10 14-9 7-11 27-24 10-15 26-22 16-20 23-19 20x27
 19x10 27-31 22-17 31-26 18-14 26-22 17-13 22-17 9-6 11-16 6-2 16-20 14-9
 17-14 9-5 14x7 2x11 12-16 11-7 16-19 draw



Red wins

A – Single Corner.

B – *Duffy's Single Corner* recommends 19-16. KingsRow plays 18-15

C – 13-22 draw PP, as in R. Pask's *21st Century Checkers* op.92 v.13-3.

D – 19-15 draw, *Master Play* p.433 v.47M.

E – 18-15* draw.

F – See the diagram. 1-6 19-15 12-16 RW.

Wynnell Neverson – Nadiya Chyzhevskaya

9-14 22-17 11-15 23-19 6-9 17-13 2-6 25-22 8-11 (Souter) 29-25 4-8 24-20 15x24 28x19 11-15 27-24 14-17
 21x14 9x18 26-23 18x27 32x23 10-14 19x10 6x15 13-9 14-18 23x14 7-10 14x7 3x10 9-6 15-18 draw (called
 a RW in *Basic Checkers* opening 86 note L1e; it is a draw as in E. Lowder – K. Hanson, 1974 National)

Nadiya Chyzhevskaya – Wynnell Neverson

9-14 22-18 5-9 24-19 11-15 18x11 8x24 28x19 4-8 25-22 8-11 22-18 11-16 29-25 7-11 21-17 14x21 18-15 11x18 23x5 16x23 26x19 3-7 25-22 7-11 27-23 11-15 32-28 15x24 28x19 10-15 19x10 6x15 23-18 draw (J. Searight – J. Ferrie, 1906 *Scottish Ty.*, *Kear's Encyclopedia* p.340 v.2)

Kim Willis – Tetiana Zaitseva

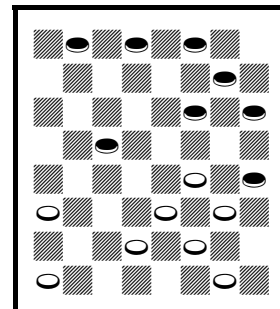
9-14 22-18 5-9 25-22 11-16 22-17(A) 9-13 18x9 13x22 26x17 6x22 24-19!(B) 8-11 30-26 4-8(C) 26x17 10-14 17x10 7x14 28-24 16-20* 31-26 {diagram} 11-16?(D) 26-22 8-11 29-25 2-7 22-18 1-5 18x9 5x14 25-22 7-10 22-18 3-7 18x9 10-14 9-6 14-18 23x14 16x23 27x18 20x27 32x23 WW

A – 24-19 or 18-15 draw PP.

B – 30-26 10-15 26-17 16-19 should draw, some Games in *The Checker World* 1907.

C – 11-15 draw PP, as in *Lees' Guide* p.48 v.6.

D – See the diagram. 3-7 draw, J. Drummond 1866 vol. 2 p.47D from 11-16 24-19 10-14.



Red draws

Tetiana Zaitseva – Kim Willis

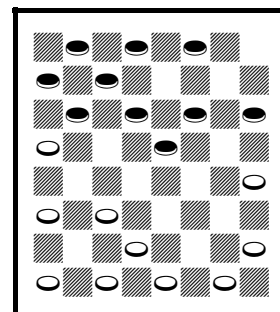
11-15 23-19 7-11 22-17 11-16 24-20?(A) 16x23!(B) 27x11 8x15 25-22 4-8! 17-13 8-11?(C) {diagram} 29-25?(D) 15-19 22-17 9-14 32-27 10-15 17x10 19-23 26x19 15x24 28x19 6x24 25-22 24-28 27-23 28-32 23-18 32-28 21-17 28-24 31-26 12-16 17-14 16-19 26-23 19x26 30x23 24-27 23-19 1-6 19-15 27-23 15x8 3x12 RW

A – I think this loses, hard to say.

B – 15-24 draw, J. Mortimer – K. Willis, 2007 World Women Qualifier.

C – 9-14 31-27 15-19 22-17 8-11 (10-15? loses) RW.

D – See the diagram. 28-24 3-8 22-17 15-18! 29-25* 10-15 26-22 or 17-14 may draw.



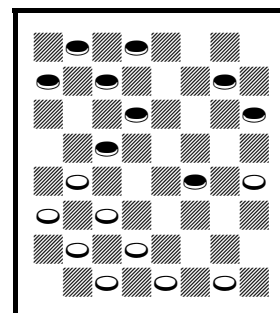
White draws?

Nadiya Chyzhevskaya – Kim Willis

11-15 23-19 8-11 22-17 11-16(A) 24-20 16x23 27x11 7x16 20x11 3-7 28-24 7x16 24-20 16-19 25-22 4-8 29-25 9-14 {diagram} 32-28?(B) 10-15 17x10 19-23 26x19 15x24 28x19 6x24 22-18 24-28 25-22 28-32 21-17 1-6 17-14 (18-15 loses) 8-11 30-25 32-28 18-15 11x18 22x15 6-10 RW

A – Glasgow.

B – See the diagram. White falls into a shot. 22-18 draw PP.



White draws

Kim Willis – Nadiya Chyzhevskaya

11-15 23-19 8-11 22-17 9-13(A) 17-14 10x17 21x14 4-8(B) 19x10 6x15 24-19
15x24 28x19 11-16 26-23(C) 1-6 25-21 8-11(D) 23-18 16x23 14-9 5x14 18x9
6-10(E) 27x18 {diagram} 11-15?(F) 18x11 7x16 9-5 10-15 5-1 3-7 1-5 15-19
29-25 7-10 25-22 10-15 30-26 2-7 5-9 19-24 9-14 WW

A – Laird and Lady.

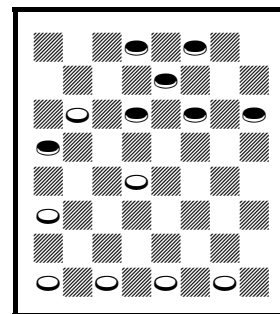
B – 15-18 draw PP.

C – 27-23 draw PP.

D – 6-9 draw, H. Spayth 1863.

E – 13-17 draw, U. Hydyrov – J. Tichy, 2012 World Mind Sports.

F – See the diagram. 10-14 31-27 14-23 27-18 11-15 draw.



Red draws

Wynnell Neverson – Tetiana Zaitseva

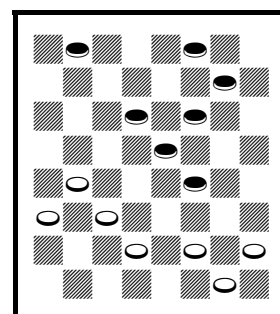
9-14 22-18 5-9 25-22 11-16 22-17 9-13 18x9 13x22 26x17 6x22 24-19 8-11 30-26
2-6(A) 26x17 10-15(B) 19x10 6x15 29-25 16-19 23x16 12x19 25-22 7-10 31-26
4-8?(C) {diagram} 17-13?(D) 1-6 27-23 19-24 28x19 15x24 23-18 10-15 21-17
15-19 18-14 6-10 14x7 3x10 13-9 10-15 9-6 15-18 22x15 11x18 17-13 18-23
26-22 23-26 6-2 26-30 2-7 19-23 22-18 draw

A – 11-15 draw PP. 4-8 in K. Willis – T. Zaitseva above.

B – 6-9 29-25 draw in my Kear's corrections.

C – 1-6* draw.

D – See the diagram. 27-24! 8-12 17-14 12-16 22-17 1-6 26-22 WW.



White wins

Tetiana Zaitseva – Wynnell Neverson

11-15 24-19 15x24 28x19 8-11 22-18 11-16 25-22 4-8 29-25 10-14 18-15 16-20
22-18 9-13 18x9 5x14 26-22 6-9?(A) {diagram} 22-18?(B) 13-17?(C) 31-26
7-11(D) 19-16 12x19 23x7 3x19 25-22 14x23 21x5 8-11 27x18 20-24 30-25
11-16 18-15 24-27 32x23 WW(E)

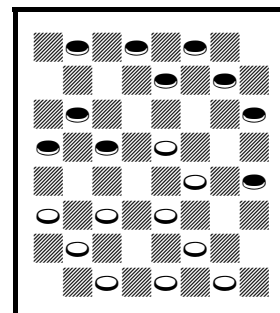
A – 14-18 or others draw.

B – See the diagram. 15-10! 8-11 19-15 WW, G. Lindsay – A. Millhone, 2004 National.

C – 2-6 RW.

D – Careless.

E – No hope. The game went on another 75 moves.



White wins

**Youth World Championships
rapid play**

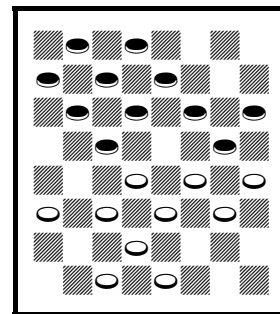
Elia Cantatore – Tetiana Zaitseva

11-15 22-18(A) 15x22 25x18 8-11 29-25 4-8 25-22 12-16 24-20 8-12 27-24 10-14
24-19 7-10 28-24 3-7 {diagram} 32-28?(B) 9-13 18x9 5x14 22-18 13-17 18x9
6x13 21x14 10x17 31-27 17-22 26x17 13x22 19-15 11x18 20x11 7x16 23x14 1-6
24-20(C) 16-19 20-16 6-10 14x7 2x20 27-23 19x26 30x23 22-26 23-18 26-31
18-14 12-16 14-10 16-19 10-6 20-24 6-1 24-27 1-6 27-32 6-10 32-27 10-6 27-23
6-10 19-24 28x19 23x16 RW

A – Single Corner.

B – A published loss. 30-25* draw PP.

C – 27-23 RW, J. Sinclair 1832 g.1 v.3.



White draws

Tetiana Zaitseva – Elia Cantatore

11-15 22-18 15x22 25x18 12-16 18-14 10x17 21x14 9x18 23x14 16-20 29-25
8-11 25-22 4-8 24-19 6-10 27-23 10x17 22x13 8-12 23-18 5-9(A) 13x6 1x10
26-23 11-15* 18x11 7x16 30-26 3-7 26-22 10-14(B) 31-27 7-10 28-24 2-7 22-18
14-17 18-15 10-14 15-11(C) 7-10 11-7 17-21 7-2 21-25 2-6 25-30 6x15 14-17
15-18 30-25?(D) {diagram} 19-15?(E) 16-19 23x16 12x28 15-11 17-22 18-15
22-26 27-24 20x27 32x23 26-31 23-19 31-27 19-16 27-24 16-12 28-32 11-7 32-28
15-10 24-19 7-2 25-22 draw

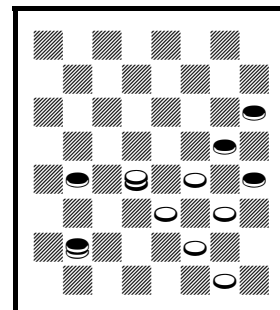
A – 2-6 draw in *Duffy's Single Corner* v.129A. 11-15 draw, T. Wiswell – W. Fraser, 1959 GAYP WCM.

B – 20-24 22-17 7-11 32-27 16-20 17-13 10-14 also draws.

C – 15-10 7-11 or 17-21 draw.

D – 17-22 draw.

E – See the diagram. 18-14 WW.



White wins

Elia Cantatore – Tetiana Zaitseva

11-15 22-17 9-14(A) 25-22 8-11 17-13 11-16 24-20(B) 3-8 20x11 7x16 22-17(C) 16-19 23x16 12x19 27-23
8-12 23x16 12x19 26-23(D) 19x26 30x23* 4-8 32-27(E) 8-12! 29-25 2-7?(F) {diagram} 25-22?(G)
15-19??(H) 23x16 12x19 27-24 19-23 22-18 5-9 18-15 10x19 17x3 9-14 24x15 6-9 13x6 1x19 3-7 14-18 7-10
18-22 10-15 23-26 15x24 26-30 21-17 22-25 17-13 25-29 13-9 29-25 9-6 25-22 6-1 22-25 24-19 25-22 19-23
30-25 28-24 WW

A – = 9-14 22-17 11-15.

B – 24-19 draw PP.

C – Popular, but not mentioned in *Lees' Guide* p.114 v.1.

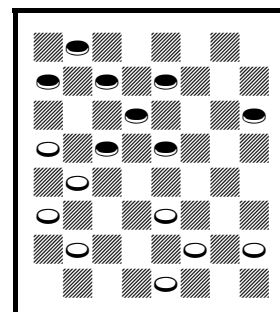
D – 31-27 should draw, G. Buchanan – A. Jackson, 1903 Scottish Ty.

E – 28-24* 15-18 or 2-7 draw.

F – 12-16 31-26 15-18 28-24 5-9! 24-20 16-19 RW, as the piece on 26 is lost.

G – See the diagram. 27-24 7-11 25-22 WW.

H – Disaster; 12-16* 27-24 16-19* 23-16 14-18 draw.



White wins

Tetiana Zaitseva – Elia Cantatore

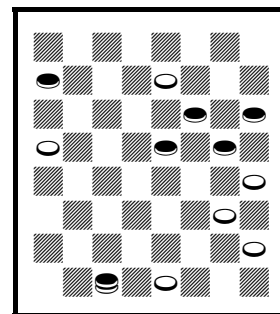
11-15 23-19 7-11 22-17 11-16 26-23 8-11 17-14 9x18 23x7 3x10 25-22 16x23
 27x18 12-16(A) 24-20 10-14 18x9 5x14* 30-26 4-8 32-27 6-10 27-24 2-6 22-17
 8-12 17-13 14-18 26-22* 18x25 29x22 10-14* 22-17 15-18 17x10 6x15 21-17
 18-22 17-14 22-25(B) 14-10 1-5?(C) 10-7 25-30 {diagram} 7-2?(D) 30-25 2-7
 25-22 7-2 22-18 2-7 18-22 7-2 22-17 2-7 17-21 7-2 21-25 2-7 25-22 7-2 draw

A – Several moves have been played here. 5-9 may be the most popular.

B – 16-19 14-10 19-23* draw.

C – 25-30 10-7 30-25* draw.

D – See the diagram. 7-3 16-19 31-27 30-25 3-7 12-16 7-10 WW.



White wins

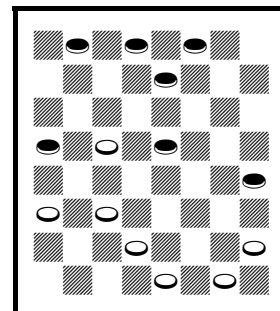
Elia Cantatore – Tetiana Zaitseva

11-15 22-17 15-19(A) 24x15 10x19 23x16 12x19 25-22 8-11 27-23 4-8 23x16
 11x20 22-18 9-14 17x10 6x22 26x17 5-9 29-25 8-11 25-22 11-15 30-26 9-13(B)
 17-14 {diagram} 15-18?(C) 22x15 7-10 15x6 2x18 28-24 20x27 32x14 3-7 21-17
 13x22 26x17 7-11 14-10 11-15 17-14 15-19 31-27 WW

A – Dyke.

B – 7-10 draw PP.

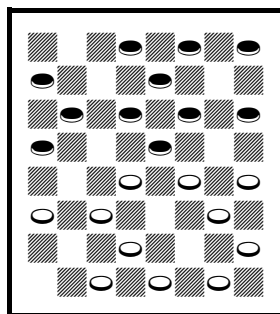
C – See the diagram. 7-11 draw, J. Wyllie – J. Forrest, *Draughts World* g.1.



Red draws

Tetiana Zaitseva – Elia Cantatore

11-15 22-18 15x22 25x18 8-11 29-25 9-13(A) 25-22(B) 5-9 24-20 10-15(C) 27-24 6-10 23-19 1-5?(D)
 {diagram} 26-23?(E) 9-14* 18x9 5x14 31-26?(F) 11-16(G) 20x11 7x16 {diagram} 30-25?(H) 14-18 23x7
 16x30 32-27 3x10 27-23 4-8 23-18 8-11 24-19 15x24 28x19 11-16 18-15 16x23 15x6 2x9 RW



White wins

A – Rare. 4-8 draw PP.

B – 24-20 draw PP.

C – 10-14 draw, KingsRow.

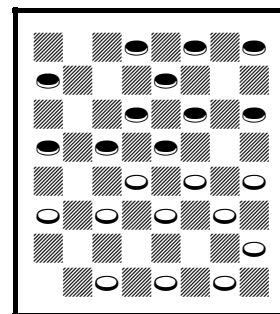
D – 11-16 or 10-14 draw.

E – See the first diagram. 19-16! 12-19 20-16! WW.

F – 30-26 or 21-17 draw.

G – 3-8 RW.

H – See the second diagram. 24-20 15-24 28-19 3-8
 20-11 8-24 22-18 24-27 RW?



Red wins?

Elia Cantatore – Tetiana Zaitseva

11-15 22-17 8-11 17-13 9-14(A) 25-22(B) 5-9(C) 22-17 11-16 24-19 15x24 28x19
4-8 29-25 8-11 25-22 11-15 32-28 15x24 27x11 7x16 23-19 16x23 26x19 2-7
30-26 7-11 26-23* 3-8 22-18* 11-16 18-15 16-20* 31-27 12-16* 19x3 10x26
17x10 6x15 13x6 1x10 3-7 {diagram} 15-19?(D) 7x14 26-31 14-10 31x24 10-15
19-23 28x19 WW

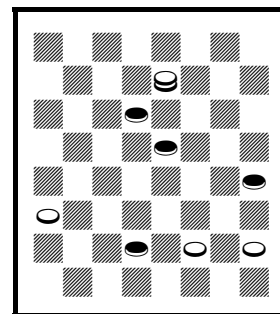
A – 15-18! Maid of the Mill, Red strong.

B – Pioneer.

C – 11-16 draw PP.

D – See the diagram. 10-14* draw (maybe continue 7-10 14-17 and 26-31 draw),

H. Newcomb – C. Lawson, 1920 National from 12-16 24-19 8-12. The names were switched in *Reisman's Pioneer* v.57A.



Red draws

Tetiana Zaitseva – Elia Cantatore

11-15 22-17 8-11 23-19 11-16(A) 24-20 16x23 27x11 7x16 20x11 3-8 11-7 2x11
25-22(B) 11-15 17-13(C) 9-14(D) 22-17 12-16 29-25 8-11 28-24 16-20 31-27 4-8
26-23* 5-9 {diagram} 30-26?(E) 11-16 32-28 8-12 25-22 1-5 RW

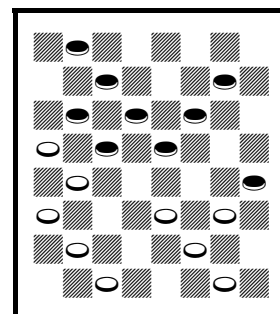
A – Glasgow.

B – 28-24 draw PP.

C – 22-18 draw, R. Martins – G. Dick, *Robertson's Guide* p.218 v.25.

D – 8-11 draw, J. Murray – G. Gresham, *Draughts World* g.1814.

E – See the diagram. 23-19* 8-12 25-22 14-18 17-14 draw.



White draws