

## Games from 2014 Sportaccord World Mind Games Checkers Event, Beijing, China, Dec 11-17, 2014

*Referees: Richard Beckwith & Charles Walker; Annotated by Rich Beckwith*

[Black "Sergio Scarpetta"] [White "Michele Borghetti"] [Result "Draw"]

**10-14 24-19 6-10** 22-17 11-15 (A) 17-13 15x24 13x6 2x9 28x19 8-11 25-22 11-15 32-28 (B) 15x24 28x19 7-11 (C) 29-25 (D) 11-16 22-17 14-18 23x7 16x32 17-13 3x10 13x6 32-28 25-22 28-24 6-2 1-6 2x9 5x14 26-23 24-19 23x16 12x19 31-27 {total game time 1:24} **Draw**

(A) Or 9-13 28-24 is the *Basic Checkers* trunk game, which goes unmentioned in *Solid Checkers*

(B) *Solid Checkers* gives play on 6 different moves here; see next game for 27-24

(C) Varies from 4-8 in *Solid Checkers* V. 7 and lead to a nice draw

(D) 22-18 11-16 is Opening 75 V. 2 in the Italian-style draughts book M. Gasparetti's *La Dama Italiana dalla A alla Z*

[Black "Michele Borghetti"] [White "Sergio Scarpetta"] [Result "Draw"]

**10-14 24-19 6-10** 22-17 11-15 17-13 (A) 15x24 13x6 2x9 28x19 8-11 25-22 11-15 27-24 14-18 23x14 9x25 29x22 5-9 22-17 (B) 9-14 17-13 1-6 30-25 (C) 4-8 25-22 15-18 22x15 12-16 19x12 10x28 26-22 7-10 31-27 14-18 22x15 10x19 21-17 6-10 13-9 10-15 9-6 8-11 6-2 19-23 {Borghetti 0:42; Scarpetta 0:39} **Draw**

(A) Into a distinctive opening, whereas 26-22 goes into a line from the 9-14 22-17 6-9 opening

(B) 26-23 9-14 23-18 & 31-27 is the R. Stewart - N. Banks draw

(C) or 26-22 12-16 is Clair-Fuller 1937 ACA National G. 117; 30-25 (instead of 26-22) is the trunk game to Opening #75 in the Gasparetti's book *La Dama Italiana dalla A alla Z*, so perhaps this game was more familiar to these two players.

[Black "Lubabalo Kondlo"] [White "Alex Moiseyev"] [Result "Draw"]

**9-13 24-19 11-15** 28-24 8-11 (A) 23-18 6-9 (B) 26-23 11-16 (C) 18x11 16-20 30-26 7x16 32-28 2-7 19-15 10x19 24x15 7-10 15x6 1x10 23-18 3-7 22-17 {18-14 wins} 13x22 26x17 9-14 18x9 5x14 17-13 14-17 21x14 10x17 13-9 17-21 (D) 25-22 21-25 9-6 25-30 6-2 (E) 7-11 2-7 30-26 22-17 26-22 17-13 4-8 13-9 11-15 9-6 22-26 31x22 15-19 6-2 19-24 28x19 16x32 7-10 8-11 2-6 32-27 6-9 27-23 {Kondlo 0:49; Moiseyev 0:59} **Draw**

(A) Natural, but may lose. Alex even used it earlier in his career, as the average expert doesn't know how to beat it.

(B) 5-9 21-17 11-16 18-11 16-23 27-18 7-16 17-14 10-17 25-21 will win (*Master Play*).

(C) For play on 9-14, see ACFB #292 p. 8

(D) Natural, but need to bring piece on 7 to square 15 first to draw: 7-11 9-6 11-15 6-2 17-21 25-22 21-25 2-7 4-8 7-3 25-30 3-7 30-26 7-11 (22-17 15-19) 26x17 11x18 8-11 27-23 17-21 31-27 21-17 28-24 17-14 18-9 11-15 draw

(E) 22-18 30-26 (7-11 gets 28-24) 31x22 16-19 29-25\* 7-11 18-15 11x18 22x15 4-8 15-11 8x15 25-22 WW

[Black "Alex Moiseyev"] [White "Lubabalo Kondlo"] [Result "Draw"]

**9-13 24-19 11-15** 28-24 6-9 22-18 15x22 25x18 9-14 (A) 18x9 5x14 29-25 8-11 25-22 (B) 11-15 23-18 14x23 27x11 7x23 26x19 4-8 22-18 (32-27, SC trunk) 8-11 32-28 11-16 19-15 10x19 24x15 3-7 30-26 1-5 31-27 (21-17 Horr-Long, 1923) 2-6 18-14 16-19 27-24 6-9 15-10 9x18 10x3 18-23 24x15 23x30 3-7 12-16 15-10 30-26 10-6 26-23 6-2 23-18 7-11 16-19 11-16 19-23 {Moiseyev 0:51; Kondlo 0:34} **Draw**

(A) This order of moves (with 9-14 before 8-11) allows white the option of 23-18 next. But playing 8-11 first allows option of 18-14, used in the 2011 World Title Match, G. 14.

(B) Recommended in *Solid Checkers* (SC). *Basic Checkers* calls it the placid Horr-Long draw and instead gives 24-20 11-15 19-16 as its attack with many published games, such as Hannigan-Moiseyev, 7th Int. Match.

[Black "Lubabalo Kondlo"] [White "Michele Borghetti"] [Result "Draw"]

**11-16 22-17 7-11** 17-14 10x17 21x14 9x18 23x14 6-9 26-23 9x18 23x14 11-15 25-22 3-7 29-25 1-6 31-26 (A) 16-19 22-17 6-9 25-21 9x18 26-23 19x26 30x14 7-11 (B) 14-10 (C) 15-19 24x15 11x18 17-13 18-22 10-6 2x9 13x6 22-26 6-2 26-30 2-6 30-26 21-17 12-16 17-14 16-19 14-10 26-31 27-24 19-23 10-7 31-26 26-22 (D) 7-3 8-12 3-7 4-8 6-10 23-27 32-23 {Kondlo 0:31; Borghetti 0:46} **Draw**

(A) 22-17 16-20 25-21 6-10 17-13 Lowder-Hallett ACFB #200 (from 10-15 22-17 6-10)

(B) 15-19 & 7-10 was suggested as a good draw in 4th Int. Match book G. 134.

(C) K. Albrecht suggested 14-10 over 14-9 when the latter was played in ACFB #161 p. 84

(D) I learned the following day that Kondlo moved twice in a row. Borghetti didn't realize it was his turn, and told Kondlo it was his move!

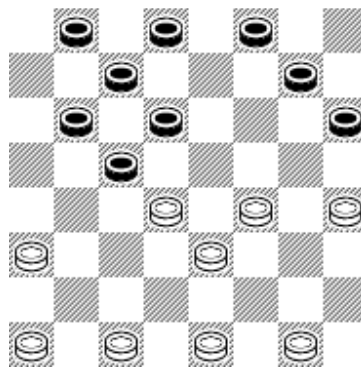
[Black "Michele Borghetti"] [White "Lubabalo Kondlo"] [Result "1-0"]

**11-16 22-17 7-11** 24-20 3-7 23-18 (A) 16-19 (B) 27-24 (C) 9-13 24x15 13x22 26x17 10x19  
25-22 6-10 17-13 1-6 29-25 11-15 18x11 8x15 22-17 4-8 31-26 8-11 17-14 10x17 21x14 6-9  
13x6 2x18 25-21 12-16 21-17 18-22 26-23 19x26 30x23 22-26 32-27 26-30 27-24 30-26 24-19  
15x24 28x12 26x19 12-8 19-15 8-3 15-10 17-14 10x17 3x10 {Kondlo 0:50; Borghetti 0:17} **BW**

- (A) Or 25-22 runs into a *Checkers the Tinsley Way* line from 11-16 24-20 7-11 opening.  
(B) Another good unexplored way is 9-13 17-14 10-17 21-14 6-10 25-21 10-17 21-14 16-19.  
(C) Hasty. Go 25-22 9-13 17-14 10-17 21-14 19-23 & 6-10 is a Case-Long draw, 1952 Am. Ty.

[Black "Alex Moiseyev"] [White "Sergio Scarpetta"] [Result "Draw"]

**11-15 24-19 15x24** 28x19 9-14 22-18 5-9 26-22 7-11 27-24 11-15 18x11 8x15 22-18 15x22  
25x18 4-8 24-20 (A, see diagram) 8-11 30-26 2-7 32-28 (B) 10-15 19x10 6x22 26x10 7x14  
29-25 11-15 23-19 15x24 28x19 3-7 19-15 7-10 15x6 1x10 25-22 10-15 22-17 14-18 17-13  
9-14 {Moiseyev 0:46; Scarpetta 0:31} **Draw**



**Black to play**

- (A) Transposes into a 5-9 Defiance line often reached by 9-14 23-19 5-9 27-23 11-15 22-18  
15x22 25x18 7-11 26-22 11-15 18x11 8x15 24-20 15x24 28x19 4-8 22-18 same.  
(B) Correctly played, as 32-27 is an old pp loss, with I once won a game in 7th Int. Match.

[Black "Sergio Scarpetta"] [White "Alex Moiseyev"] [Result "Draw"]

**11-15 24-19 15x24** 28x19 8-11 22-18 4-8 25-22 11-16 (A) 22-17 (B) 16-20 17-13 8-11 26-22  
10-15 19x10 7x14 (C) 29-25 6-10 13x6 2x9 23-19 14x23 27x18 11-16 (D) 31-26 16x23  
26x19 9-14 18x9 5x14 22-17 14-18 32-27 {Scarpetta 0:43 Moiseyev 0:55} **Draw**

- (A) Jim Loy gave some primer lines on this in *ACFB* #338 p. 6.  
(B) or 29-25 10-14 27-24 (not 18-15? 16-20, Wyllie's "invincible") is J. Robertson's Guide trunk.  
(C) Sergio mentioned he jumped the other way in his first King match (in 2012, G. 22); Alex said this line was good to make him think!  
(D) 9-14, Hynd-Buchanan, Scotland vs. England, 1899.

[Black "Michele Borghetti"] [White "Alex Moiseyev"] [Result "Draw"]

**9-13 24-20 10-14** 22-18 5-9 25-22 6-10 27-24 10-15 22-17 13x22 26x10 15x22 30-26 7x14 26x10 2-7 10-6 1x10 31-26 10-15 24-19 15x24 28x19 11-15 19x10 7x14 29-25 3-7 25-22 9-13 22-18 {with 14-17 & 7-10 & 12-16 next; also R. Johnson-Cravens 1974 Am. Ty. This line is also the *Solid Checkers* Trunk game, Pask-Long, Moiseyev 0:24; Borghetti 0:31} **Draw**

[Black "Alex Moiseyev"] [White "Michele Borghetti"] [Result "Draw"]

**9-13 24-20 10-14** 22-17 13x22 26x10 7x14 25-22 6-9 28-24 **(A)** 3-7 30-26 1-6 **(B)** 22-17 14-18 23x14 9x18 26-22 **(C)** 18x25 29x22 7-10 27-23 11-15 23-19 5-9 17-13 8-11 22-17 9-14 32-28 4-8 31-26 2-7 26-22 14-18 17-14 18x25 14-9 25-30 9x2 30-26 20-16 11x27 2x18 26-23 **(D)** {Borghetti 0:53; Moiseyev 0:55} **Draw**

**(A)** 23-19 1-6 22-17 14-18 19-15 Fortman-Tinsley 1979 practice game

**(B)** This landing is also reached other ways, such as by 9-14 22-18 5-9 24-20 10-15 28-24 15-22 26-10 7-14 25-22 1-5 30-26 3-7 same

**(C)** 32-28, Loy's *Prague 2005* p. 36 v. 7

**(D)** Also Ryan-Hellman, 1949 G. 13 (from 10-14 24-20 6-10 opening)

[Black "Lubabalo Kondlo"] [White "Sergio Scarpetta"] [Result "0-1"]

**10-14 22-18 7-10** 24-20 10-15 **(A)** 28-24 15x22 26x10 6x15 23-19 15-18 21-17 9-13 **(B)** 17-14 3-7 **(C)** 19-15 1-6 31-26 **(D)** 13-17 26-23 6-9 15-10 17-22 10x3 22-26 14-10 9-14 25-22 18x25 29x22 26-31 23-18 14x23 27x18 {game time 1:22} **WW**

**(A)** 11-16 is usual, with *Solid Checkers* saying 10-15 has a bad track record. However, Moiseyev has improved the defense.

**(B)** May lose. 3-7 is better (*Solid Checkers* V. 16 from 10-14 24-20 7-10), then 19-15 7-10 15-6 1-10 25-21 10-15 (over 9-14) 17-14 18-22 is the Moiseyev-Bruch game, *ACFB* #320.

**(C)** One could try 13-17 25-21 3-7 19-15 1-6 30-25 12-16 31-26 16-19 32-28 17-22 26-17 19-23 24-19 & 14-10, but a probable WW

**(D)** Improves 24-19 13-17 31-26 7-10 14-7 11-16 & 6-10, C. Modich - R. Beckwith 2005 Northern

[Black "Sergio Scarpetta"] [White "Lubabalo Kondlo"] [Result "1-0"]

**10-14 22-18 7-10** 25-22 11-16 29-25 8-11 **(A)** 18-15 11x18 22x15 10x19 24x15 3-7 23-19 **(B)**  
16x23 26x19 4-8 31-26 **(C)** 7-11 26-22 11x18 22x15 6-10 15x6 1x10 27-24 8-11 30-26 11-15  
24-20 15x24 28x19 2-7 25-22 9-13 32-28 **(D)** 14-17 21x14 10x17 22-18 5-9 18-15 17-21 26-23  
21-25 15-11 7x16 20x11 25-30 11-7 30-26 7-2 26-31 23-18 31-27 18-15 27-23 28-24 23x16  
15-11 16x7 2x11 13-17 11-15 17-22 15-18 22-26 24-19 26-30 {game time 2:00} **BW**

**(A)** Correct. 16-19 was tried in Kondlo-King 2012 Sportaccord, shown in the 2013 ICHF *Checkers* Magazine p. 164.

**(B)** *Basic Checkers* features 26-22, and 27-24 was ventured in King-Kondlo 2012 Sportaccord, with King later losing on time, 2013 ICHF *Checkers*, p. 165.

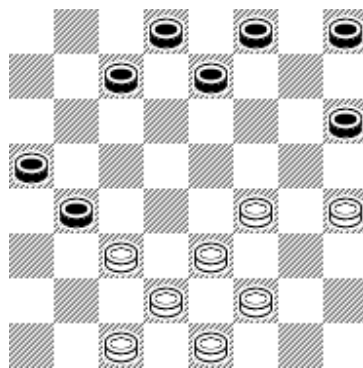
**(C)** 27-24 is the Fortman-Edwards mail game draw.

**(D)** 20-16 or 32-27 draws -- the theme being that white must "wall up" his back pieces on squares 16-19-23-26 to survive.

**Rounds 4-6: begin "rapid" time control of 15:05 minutes for each player, with 5 seconds earned with each press of clock.**

[Black "Michele Borghetti"] [White "Sergio Scarpetta"] [Result "Draw"]

**9-13 24-19 5-9** 28-24 11-15 22-18 15x22 25x18 1-5 **(A)** 29-25 8-11 24-20 9-14 **(B)** 18x9  
5x14 25-22 11-15 32-28 15x24 28x19 14-17 21x14 10x17 **(C)** 23-18 3-8 **(D)** 19-15 **(E)** 7-10  
15-11 8x15 18x11 10-15 27-23 12-16 23-18 6-9 26-23 17x26 31x22 15-19 18-15 19x26  
30x23 9-14 22-18 16-19 23x16 14x23 15-10 23-26 10-7 26-31 7-3 31-26 11-7 2x11 16x7  
26-23 {Time left: MB 1:30; SS 0:20} **Draw**



**White to play (note C)**

**(A)** Bypassing the weak 10-15 line played twice in the 2012 Sportaccord games involving Borghetti and Kondlo, 2013 ICHF *Checkers* magazine, p. 179, 180.

(B) *Basic Checkers* stars 3-8, but 9-14 seems sound. M. Gasparetti's *La Dama Italiana dalla A alla Z* gives 9-14 as its trunk line and questions 3-8. But this is an Italian-style draughts book with different endgame rules. The Italian published play (which overlaps significantly with Anglo-American checkers) is likely a source of inspiration for these two players.

(C) The position (see diagram) is reminiscent of an Inferno mid-game landing that arises from 9-13 22-18 10-14 18-9 5-14 25-22 11-15 24-19 15x24 28x19 6-10 22-18 1-5 18x9 5x14 29-25 8-11 25-22 11-15 32-28 15x24 28x19 14-17 X, but the Italians have extra pieces on 6 and 20 here.

(D) 4-8\* draws by 18-14 8-11 27-23 6-10 14-9 11-15 19-16 12-19 23-16 15-19.

(E) 27-23 wins by 6-10 (8-11 19-16 X 6-10 31-27 17-21 27-24 WW) 18-15 2-6 23-18 7-11 20-16 & 18-14 WW

[Black "Sergio Scarpetta"] [White "Michele Borghetti"] [Result "Draw"]

**9-13 24-19 5-9** 22-18 10-14 (A) 21-17 (B) 14x21 18-15 11x18 23x5 8-11 25-22 7-10 27-23 4-8 28-24 (C) 11-15 (D) 22-17 13x22 26x17 6-9 29-25 9-14 25-22 8-11 17-13 (E) 11-16 (F) 24-20 15x24 20x11 12-16 32-28 24-27 31x24 14-17 22-18 10-15 18-14 15-18 24-19 18x27 19x12 27-32 11-8 32-27 8-4 17-22 4-8 22-26 30x23 27x9 13x6 2x9 8-11 {Time left: SS 1:20; MB 3:40} **Draw**

(A) 11-15 is common, as 10-14 permits "Paxton" line attacks with 25-22, but declined here.

(B) Now "off into the woods," but these guys seems good at doing that!

(C) 29-25 11-16 22-18 8-11 25-22 2-7 32-27 16-20 19-16 X 10-15 18-14 6-9 14-10 & 26-23 Dr.

(D) Improves 2-7, Beckwith-Wray, 2011 PA (from 9-13 24-19 10-14 22-18 5-9 opening)

(E) Or 32-28 11-16 24-20 15x24 20x11 3-7 28x19 7x16 17-13 16-20 22-18 14-17 18-14 Draws

(F) 14-17 32-28 17-26 31-22 11-16 24-20 improves the ending, but draws.

[Black "Alex Moiseyev"] [White "Lubabalo Kondlo"] [Result "Draw"]

**10-14 22-17 9-13** 17x10 6x15 (A) 25-22 15-19 24x15 11x25 29x22 12-16 (B) 22-18 8-12 28-24 5-9 30-25 (C) 4-8 25-22 8-11 22-17 13x22 26x17 9-13 17-14 13-17 31-26 1-6 14-9 6x13 21x14 13-17 14-10 7x14 18x9 11-15 32-28 17-21 26-22 16-19 23x16 12x19 22-17 2-7 24-20 7-11 27-24 19-23 9-6 23-27 6-2 27-31 2-6 3-8 6-10 15-19 24x15 11x18 20-16 18-22 10-15 8-12 16-11 12-16 11-7 16-20 {Time left: AM 0:30; LK 0:30} **Draw**

(A) 7-14?, Kondlo-Borghetti, 2012 Sportaccord, 2013 ICHF *Checkers Magazine*, p. 168

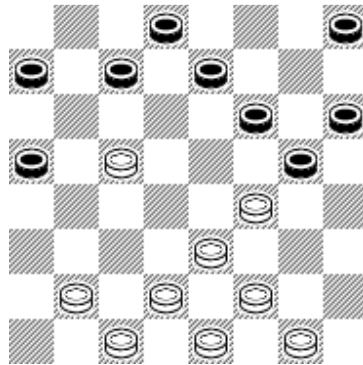
(B) 7-10, Kondlo-Moiseyev, 2012 Sportaccord, 2013 ICHF *Checkers Magazine*, p. 172

(C) There are three other ways: i) 18-14 in Moiseyev's "new openings" play, *ACFB* #310

ii) 26-22 7-10 24-19, King-Moiseyev, 2005 G. 19 iii) 24-19 4-8 26-22 16-20 in Canning's *The Secrets of Mail Play Revealed*, 2nd ed. book, p. 120

[Black "Lubabalo Kondlo"] [White "Alex Moiseyev"] [Result "Draw"]

**10-14 22-17 9-13** 17x10 6x15 24-19 15x24 28x19 11-16 **(A)** 25-22 7-10 22-18 3-7 18-14 **(B)**  
10x17 21x14 1-6 29-25 8-11 {see diagram} 26-22 **(C,D)** 6-10 30-26 **(E)** 10x17 25-21 2-6  
21x14 6-9 22-18 13-17 26-22 17x26 31x22 16-20 19-15 12-16 15x8 4x11 32-28 11-15 18x2  
9x25 28-24 25-30 24-19 30-26 19x12 26x19 2-6 **Draw**



White to play, what result?

- (A)** 1-6 usual and best, as played by both Borghetti and Moiseyev against Kondlo in 2012 Sportaccord, 2013 ICHF *Checkers Magazine*, p. 168, 172
- (B)** Or 29-25 or 21-17 may win
- (C)** *ACFB* #318 gave 26-22 to win, but it draws, as shown here. I once thought 23-18 drew, but now it seems to win. Continue: 16-23 26-19 13-17 31-26 (Loy suggested this as stronger than my 25-21, Hallett-Beckwith 2004 *Am. Ty.*, *ACFB* #318) 11-16 **(F)** 27-23 16-20 19-15 20-24 23-19 WW
- (D)** 25-21 6-9 23-18 16-23 26-19 13-17 31-26 17-22 26-17 9-13 27-24 13-22 21-17 WW
- (E)** 31-26 10-17 25-21 2-6 21-14 4-8 30-25 6-9 19-15 XX 13-17 scrapes through to draw.
- (F, off C)** 6-10 25-21 12-16 19-12 10-15 26-23 15-22 12-8 22-26 27-24 11-16 8-3 26-31 3-10 31-27 14-9 WW

[Black "Michele Borghetti"] [White "Lubabalo Kondlo"] [Result "1-0"]

**10-15 24-20 15-19** 23x16 12x19 27-23 **(A)** 8-12 23x16 12x19 32-27 4-8 27-23 **(B)** 8-12 23x16 12x19 31-27 3-8 27-23 8-12 23x16 12x19 26-23 19x26 30x23 11-16 20x11 7x16 28-24 16-20 24-19 20-24 19-16 24-27 16-11 27-31 11-8 9-14 {nice move by Michele} 8-3 31-26 23-19 26x17 3-8 17-13 25-22 2-7 19-16 6-10 {Time left: MB 8:50; LK 4:50} **BW**

- (A)** Continuing to run off the piece this way doesn't work, whereas 27-24 is much better.
- (B)** 22-18 9-14 18-9 5-14 25-22 11-15 22-17 7-11 17-10 19-24 to a black win, R. King - C. McCarick, 2001 *Eng. Open*.

[Black "Michele Borghetti"] [White "Lubabalo Kondlo"] [Result "Draw"]

**10-15 24-20 15-19** 23x16 12x19 21-17 (A) 11-15 27-24 7-10 17-13 (B) 8-12 (C) 22-17 9-14 25-21 4-8 32-27 5-9 (D) 29-25 3-7 27-23 8-11 23x16 12x19 26-23 19x26 30x23 15-18 24-19 18x27 31x24 11-15 20-16 7-11 16x7 2x11 24-20 15x24 28x19 11-15 19-16 15-18 16-11 18-22 25x18 14x23 11-7 23-26 7-2 1-5 20-16 26-31 16-11 31-26 11-7 26-23 7-3 23-19 2-7 19-23 7x14 9x18 3-7 23-19 17-14 {Time left: LK 2:40 MB: 10:30} **Draw**

(A) *Solid Checkers* calls this an underrated line

(B) 22-18 15x22 24x15 10x19 25x18 6-10 17-13 10-14 13x6 14x23 31-27 1x10 27x18 8-11 29-25 3-7 26-22 10-14 18x9 5x14 25-21 7-10 22-17 11-15 17-13 19-24 28x19 15x24 13-9 10-15 9-5 15-18 5-1 24-27 to a draw, R. Beckwith -R. King, 2008 Ohio.

(C) 9-14 20-16 2-7 (or 8-12) 22-18 (or 25-21 8-11 22-18 *Kear's V. 30*) 14-23 25-22 23-27 32-23 7-11 16-7 8-11 etc. and 15-18 is a cute line in *Solid Checkers*, V. 10.

(D) 2-7 29-25 7-11 27-23 12-16 25-22 5-9 31-27 1-5 30-25 3-7 22-18 to a draw, but tricky

[Black "Sergio Scarpetta"] [White "Alex Moiseyev"] [Result "Draw"]

**9-14 24-19 5-9** 27-24 (A) 11-15 22-18 15x22 25x18 7-11 19-15 10x19 23x7 14x23 26x19 3x10 32-27 (B) 8-11 29-25 (C) 9-14 (D) 27-23 11-15 24-20 15x24 28x19 10-15 19x10 6x15 30-26 15-19 23x16 12x19 26-23 19x26 31x22 4-8 20-16 8-11 16x7 2x11 22-17 14-18 {Time left: SS 3:00 AM 3:20} **Draw**

(A) This position is usually reached in the books from 9-14 23-19 5-9 opening, then 27-24.

(B) 29-25 is *Basic Checkers* trunk and *Solid Checkers* V. 3 from the Note A run-up.

(C) 27-23 11-15 30-26 9-14 19-16 is the Markusic game mentioned in *Basic Checkers*

(D) 11-15 (or 11-16 19-15, Lowder-Burton, 1978 Am. Ty.) 27-23 4-8 30-26 8-11 24-20, Long-Mourning, 1960 Am. Ty.

[Black "Alex Moiseyev "] [White " Sergio Scarpetta "] [Result "0-1"]

**9-14 24-19 5-9** 22-18 11-15 18x11 8x24 28x19 4-8 26-22 (A) 8-11 27-24 9-13 (B) 22-18 1-5 18x9 5x14 25-22 14-17 (C) 21x14 10x26 31x22 6-10 (D, E) 29-25 11-15 25-21 7-11 23-18 11-16 {2-6 or 3-7 draws} 18x11 16x23 24-19 3-7 11-8 7-11 22-18 11-16 8-4 16-20 4-8 20-24 8-11 24-27 18-14 10x17 21x14 27-31 11-15 31-26 14-9 13-17 9-5 2-6 5-1 6-9 1-6 9-13 6-10 26-22 19-16 12x19 15x24 22-18 24-27 17-21 10-7 {total game time 0:33} **WW**

(A) Sergio later mentioned he used a *Master Play* idea here, varying from usual 25-22.

(B) There are two other ways. *Basic Checkers* likes 1-5, Oldbury-Tinsley 1958 G. 10. The other is 11-15 played by Kondlo-Scarpetta both in the next round and also back in the 2011 WQT .

(C) Or 11-15 is *Master Play* trunk from 9-14 22-18 5-9 opening.



**(D)** This move is rather difficult to make a draw with, given the later bridge endings and the shorter time controls here. Instead, 7-10 29-25 3-7 (or 11-15 32-28 3-7 24-20 *Master Play* p. 102-E) 24-20 10-14 25-21 6-10 22-18 14-17 to a draw, Long-Banks, 1943 G. 31.

**(E)** 11-16 drew, Ron-King-Sergio Scarpetta, 2014 GAYP match, G. 3 (in this issue).

[Black "Alex Moiseyev"] [White "Michele Borghetti"] [Result "0-1"]

**12-16 24-20 10-15** 28-24 15-18 22x15 11x18 20x11 8x15 23x14 9x18 21-17 4-8 **(A)** 25-21 5-9 17-13 **(B)** 8-12 29-25 7-11 **(C)** 26-22 11-16 21-17 16-19 24-20 9-14 17x10 2-7 20-16 7x14 16-11 12-16 31-26 19-24 **(D)** 27x20 16-19 32-28 18-23 28-24 19x28 26x10 6x15 25-21 28-32 22-17 14-18 17-14 **(E)**...then continue from note (E) position: 15-18 11-8 18-22 8-3 31-27 14-10 27-23 3-7 1-5 10-6 22-26 7-10 26-31 10-14 **WW** { Time left: AM 0:30; MB 6:11} **WW**

**(A)** 5-9 now was played in many games in the 1998 I-D book

**(B)** 17-14, Hellman-Ryan 1949 G. 10 from 10-14 24-20 14-18 opening.

**(C)** 9-14 26-23 3-8 23-19 7-10 30-26 2-7 26-23 8-11 32-28 1-5 21-17 drew, Cake-KingsRow, 2002

**(D)** 16-20 allows the shot, but is the only draw. 1-5 27-23 18-27 32-23 16-20 also lost, Lawson-Oldbury 1950 Scottish Ty. from 10-15 21-17 15-18 opening.

**(E)** Because of the rapid-play and "time trouble" rules, the moves weren't fully recorded, but eventually this position was reached: **White: 30, 14, 13, 11, K2 Black: 1, 15, K19, K31**

[Black "Michele Borghetti"] [White "Alex Moiseyev"] [Result "Draw"]

**12-16 24-20 10-15** 22-18 15x22 25x18 6-10 **(A)** 29-25 1-6 **(B)** 25-22 11-15 18x11 8x15 20x11 7x16 23-19 {23-18 is another attack} 16x23 27x11 3-8 11-7 2x11 26-23 9-13 28-24 8-12 24-19 **(C)** 11-15 32-28 15x24 28x19 4-8 22-18 8-11 18-14 10x17 21x14 6-9 23-18 11-16 19-15 16-19 15-10 19-23 10-6 12-16 6-2 16-20 2-7 23-27 31x24 20x27 7-11 27-31 11-15 13-17 14-10 9-14 18x9 5x14 10-6 31-27 15-10 27-23 6-2 14-18 10-14 17-21 30-26 { Time left MB 1:56; AM 0:20} **Draw**

**(A)** Seems more restrictive than 8-12 (and if the 6-10 line is known).

**(B)** Unsound? I prefer 8-12 27-24 10-15 25-22 7-10 24-19 X 9-14 X 22-18 1-6 X 32-27 10-14 27-24 3-8 21-17 etc., as given by Moiseyev in his "new openings" primer, *ACFB* #309, Also *Nemesis-Cake*, 2002 with minor transposition.

**(C)** 22-18 wins by 6-9 30-26 4-8 24-19 11-16 32-28\*. Now three ways: 16-20 gets 28-24, and 10-14 instead gets 26-22, and 8-11 gets the shot by 19-15 & 18-14.

[Black "Sergio Scarpetta"][[White "Lubabalo Kondlo"]][Result "Draw"]

**9-14 24-19 5-9** 22-18 11-15 18x11 8x24 28x19 4-8 25-22 8-11 22-18 11-16 29-25 3-8 **(A)** 32-28  
7-11 25-22 16-20 27-24 20x27 31x24 11-16 19-15 10x19 24x15 6-10 15x6 1x10 18-15  
10x19 22-17 16-20 **(B)** 17x10 9-14 23x16 12x19 26-23 19x26 30x23 8-12 23-19 20-24  
{Time left: SS 3:30; LK 4:20} **Draw**

**(A)** 7-11 25-22 1-5 drew, Borghetti-King 2012 Sportaccord, 2013 ICHF *Checkers* Mag., p. 168  
**(B)** Or 8-11 17-10 19-24 28-19 11-15 draw R. King - P. McCarthy 1997 G. 21

[Black "Lubabalo Kondlo"][[White "Sergio Scarpetta"]][Result "Draw"]

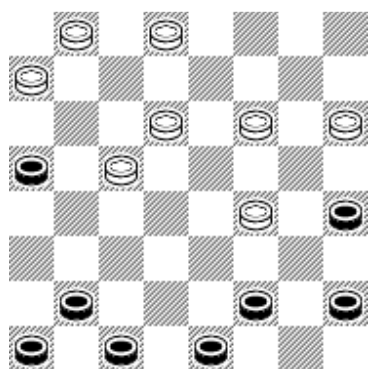
**9-14 24-19 5-9** 22-18 11-15 18x11 8x24 28x19 4-8 26-22 8-11 27-24 11-15 **(A)** 22-18 15x22  
25x18 7-11 30-26 1-5 **(B)** 26-22 **(C)** 3-7 29-25 9-13 18x9 5x14 24-20 14-17 21x14 10x26  
31x22 11-16 20x11 7x16 25-21 6-10 22-18 16-20 18-14 10x17 21x14 13-17 19-15 17-22 15-10  
22-26 23-18 26-30 {Time left: LK 4:50; SS 4:00} **Draw**

**(A)** 9-13 is Moiseyev-Scarpetta in an earlier round in this event.  
**(B)** 2-7 32-28 (or 26-22 10-15 is *Master Play* p. 103-N) 10-15 is Fraser-Wiswell 1956 G. 4  
**(C)** 29-25 9-13 18-9 5-14 24-20 11-15 32-28 K. Hanson - R Johnson, 1976 FL.

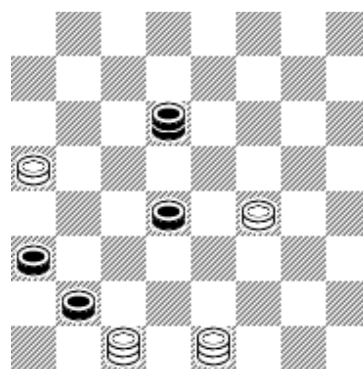
**Playoff round: begin "rapid" time control of 15:05 minutes for each player for two games, with 5 seconds earned with each press of clock.**

[Black "Sergio Scarpetta"][[White "Michele Borghetti"]][Result "0-1"]

**10-15 22-17 9-13** 17-14 6-9 26-22 **(A)** 9x18 23x14 12-16 **(B)** 30-26 15-18 22x15 11x18 26-22  
**(C)** 7-11 22x15 11x18 25-22 18x25 29x22 16-20 24-19 1-6 27-23 {see 1st diagram} 13-17 **(D)**  
22x13 6-9 13x6 2x27 32x23 5-9 23-18 {21-17 wins, holding 23-18 back} 8-12 21-17 9-13 17-14  
13-17 14-10 17-22 10-6 4-8 28-24 20x27 31x24 8-11 24-20 22-26 19-15 3-8 15-10 26-31 10-7  
31-26 7-3 26-23 18-14 11-15 6-2 {see 2nd diagram} 15-18 **(E)** 2-6 18-22 6-10 23-19 3-7 22-26  
14-9 26-31 9-6 31-27 6-1 27-23 1-5 23-26 5-9 26-23 9-14 23-27 14-18 27-24 18-15 24-28  
15x24 28x19 7-3 19-23 10-15 23-26 3-7 26-22 7-10 22-17 20-16 12x19 15x24 {Time left for  
second game: SS 0:21; MB 6:26} **WW**



Black to play



Black to play and draw

- (A) 24-19 as in next game is more usual, but I suppose credit must be given to Borghetti for avoiding the published play of that game by playing something that eventually won. The above 26-22 move gives a position reached from the opening 9-13 23-18 10-15 18-14 6-9 26-23.
- (B) 15-18 was played in the *Wyllie Pro-Moiseyev* 2002 match (G. 57 from 9-13 runup). Later, Alex gave 1-6 30-26 15-18 X 26-22 7-11 X 24-19 6-10 to draw (*Sixth* SG-13 Note A), and this defense avoids the bad endings that Sergio encountered.
- (C) Or 24-20 1-6 is Fuller-Martin, 1974 A. Ty from 9-13 23-18 10-15 runup.
- (D) This gives an ending that is a database loss, but hard to discern all this with time pressure. 8-11 32-27 4-8 22-18 13-17 14-9 is one drawing route.
- (E) Setting up 15-19 2-6 19-24 6-10 23-18 14-9 24-27 9-6 27-32 6-1 32-28 1-5 18-23 5-9 23-18 10-14 18-15 draws

[Black "Michele Borghetti"] [White "Sergio Scarpetta"] [Result "Draw"]

**10-15 22-17 9-13** 17-14 6-9 (A) 24-19 9x18 23x14 15x24 28x19 7-10 14x7 3x10 26-23 11-15 27-24 5-9 25-22 9-14 30-25 (B) 1-5 22-18 15x22 25x9 5x14 29-25 8-11 25-22 2-7 22-18 14-17 21x14 10x17 18-14 17-22 14-9 22-25 9-6 25-29 6-2 29-25 24-20 25-22 20-16 11x20 2x11 13-17 19-15 17-21 15-10 21-25 11-15 25-30 15-19 30-26 19-15 26x19 15x24 20x27 31x24 22-18 10-7 18-15 7-3 15-10 32-27 4-8 27-23 8-11 3-8 11-16 8-11 16-20 24-19 20-24 23-18 24-27 18-15 10-14 11-16 27-31 15-11 31-27 16-20 14-10 11-8 10-7 20-16 7-10 16-20 27-23 {time left MB 2:38 SS 0:21} **Draw**

- (A) 11-16 is another older defense, but 6-9 seems to simplify
- (B) This (and continuation) was given in Moiseyev's *Sixth*, p. 250 to improve Lowder's 31-27.

## Checkers Event 11-17 December, 2014 Sportaccord WMG

### Final Standings (Six Rounds = Playoff)

1.	Michele Borghetti (Italy)	15*	\$2834	Gold
2.	Sergio Scarpetta (Italy)	15	\$2833	Silver
3.	Alexander Moiseyev (USA)	10	\$1700	Bronze
4.	Lubabalo Kondlo (South Africa)	8	\$1133	

### Game-by-game results:

	Black	White	Game #	Score
<b>Round 1</b>	Lubabalo Kondlo	Alexander Moiseyev	1	<b>1-1</b>
	Alexander Moiseyev	Lubabalo Kondlo	2	<b>1-1</b>
	Sergio Scarpetta	Michele Borghetti	1	<b>1-1</b>
	Michele Borghetti	Sergio Scarpetta	2	<b>1-1</b>
<b>Round 2</b>	Alexander Moiseyev	Sergio Scarpetta	1	<b>1-1</b>
	Sergio Scarpetta	Alexander Moiseyev	2	<b>1-1</b>
	Lubabalo Kondlo	Michele Borghetti	1	<b>1-1</b>
	Michele Borghetti	Lubabalo Kondlo	2	<b>2-0</b>
<b>Round 3</b>	Lubabalo Kondlo	Sergio Scarpetta	1	<b>0-2</b>
	Sergio Scarpetta	Lubabalo Kondlo	2	<b>2-0</b>
	Michele Borghetti	Alexander Moiseyev	1	<b>1-1</b>
	Alexander Moiseyev	Michele Borghetti	2	<b>1-1</b>
Rest day				
<b>Round 4</b>	Alexander Moiseyev	Lubabalo Kondlo	1	<b>1-1</b>
	Lubabalo Kondlo	Alexander Moiseyev	2	<b>1-1</b>
	Michele Borghetti	Sergio Scarpetta	1	<b>1-1</b>
	Sergio Scarpetta	Michele Borghetti	2	<b>1-1</b>
<b>Round 5</b>	Sergio Scarpetta	Alexander Moiseyev	1	<b>1-1</b>
	Alexander Moiseyev	Sergio Scarpetta	2	<b>0-2</b>
	Michele Borghetti	Lubabalo Kondlo	1	<b>2-0</b>
	Lubabalo Kondlo	Michele Borghetti	2	<b>1-1</b>
<b>Round 6</b>	Sergio Scarpetta	Lubabalo Kondlo	1	<b>1-1</b>
	Lubabalo Kondlo	Sergio Scarpetta	2	<b>1-1</b>
	Alexander Moiseyev	Michele Borghetti	1	<b>0-2</b>
	Michele Borghetti	Alexander Moiseyev	2	<b>1-1</b>
<b>Round 7</b>	Sergio Scarpetta	Michele Borghetti	1	<b>0-2</b>
	Michele Borghetti	Sergio Scarpetta	2	<b>1-1</b>

Rounds 1-3: 30 moves per 1 hour; then 15 min. (+ 5 s) to end;

Rounds 4-6: 15 min. (+ 5 s) to end

\*Playoff Round 7: 15 min. (+ 5 s) for both games (clock not reset after end of first game), won by Borghetti

**BY GAME:**

#	Name	Country	1		2		3		4		Points	Final Place	Remark
			R1	R2	R1	R2	R1	R2	R1	R2			
1	Michele Borghetti	Italy			1-2	2-1	1-1	2-1	1-1	1-1	15	1	*
2	Lubabalo Kondlo	South Africa	1-0	0-1			1-1	1-1	0-0	1-1	8	4	
3	Alexander Moiseyev	USA	1-1	0-1	1-1	1-1			1-1	1-0	10	3	
4	Sergio Scarpetta	Italy	1-1	1-1	2-2	1-1	1-1	1-2			15	2	

*\*Won head-to-head playoff over Sergio Scarpetta 1-0 with 1 draw.*

**BY ROUND TOTAL:**

#	Name	Country	1		2		3		4		Points	Final Place	Remark
			R1	R2	R1	R2	R1	R2	R1	R2			
1	Michele Borghetti	Italy			3	3	2	3	2	2	15	1	*
2	Lubabalo Kondlo	South Africa	1	1			2	2	0	2	8	4	
3	Alexander Moiseyev	USA	2	1	2	2			2	1	10	3	
4	Sergio Scarpetta	Italy	2	2	4	2	2	3			15	2	

*\*Won head-to-head playoff over Sergio Scarpetta 1-0 with 1 draw.*

**Rounds 1-6 Results & Playoff:**

Rd.	Pairing	Opening	Results
1	Alex Moiseyev (USA) vs. Lubabalo Kondlo (RSA)	9-13 24-19 11-15	2 draws
	Sergio Scarpetta (ITA) vs. Michele Borghetti (ITA)	10-14 24-19 6-10	2 draws
2	Michele Borghetti (ITA) vs. Lubabalo Kondlo (RSA)	11-16 22-17 7-11	Borghetti: win & draw
	Alex Moiseyev (USA) vs. Sergio Scarpetta (ITA)	11-15 24-19 15-24	2 draws
3	Alex Moiseyev (USA) vs. Michele Borghetti (ITA)	9-13 24-20 10-14	2 draws
	Sergio Scarpetta (ITA) vs. Lubabalo Kondlo (RSA)	10-14 22-18 7-10	Scarpetta: 2 wins
4	Alex Moiseyev (USA) vs. Lubabalo Kondlo (RSA)	10-14 22-17 9-13	2 draws
	Sergio Scarpetta (ITA) vs. Michele Borghetti (ITA)	9-13 24-19 5-9	2 draws
5	Michele Borghetti (ITA) vs. Lubabalo Kondlo (RSA)	10-15 24-20 15-19	Borghetti: win & draw
	Alex Moiseyev (USA) vs. Sergio Scarpetta (ITA)	9-14 24-19 5-9	Scarpetta: win & draw
6	Alex Moiseyev (USA) vs. Michele Borghetti (ITA)	12-16 24-20 10-15	Borghetti: win & draw
	Sergio Scarpetta (ITA) vs. Lubabalo Kondlo (RSA)	9-14 24-19 5-9	2 draws
7	Sergio Scarpetta (ITA) vs. Michele Borghetti (ITA)	10-15 22-17 9-13	Borghetti: win & draw